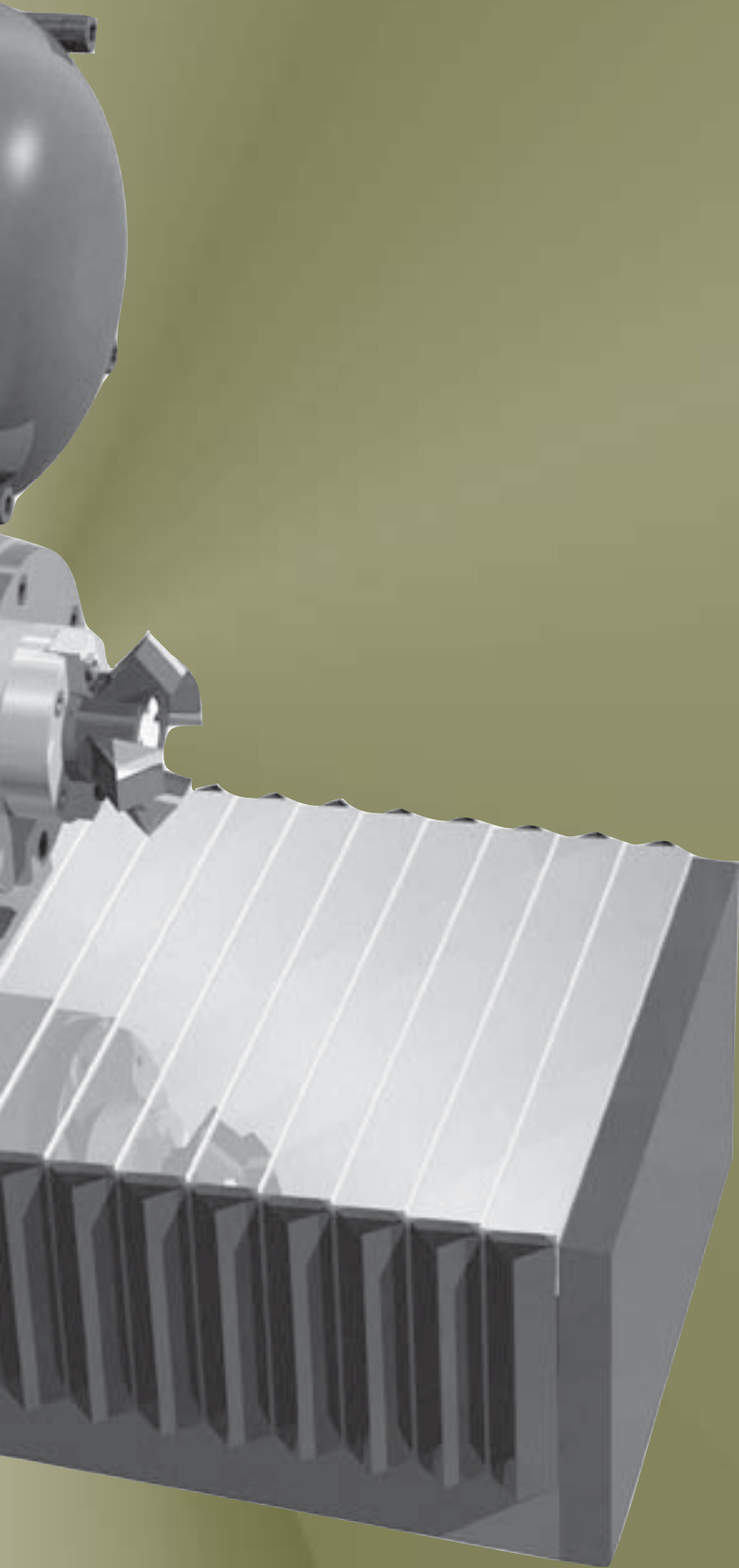


EUROMA[®]

SLIDE MACHINING UNITS



Machining unit C.29 consists of an ISO 30 - F.25 spindle head fitted to a linear, row ball slide. Two models are available:

C.PK.29 = F.25 without mounting base (page 91) + collar E.FE100 cod.10410197 + S.CPK.200 (page 110)
 C.I.29 = F.25 without mounting base (page 91) + collar E.FE100 cod.10410197 + S.CI.200 (page 106)

Each unit is available with two bearing configurations which make them suitable for specific applications:

MACHINING UNIT = C.29.RC
 (adjustable taper roller bearings)

This unit is especially suitable for drilling and axial or radial milling applications.

BORING UNIT = C.29.CO
 (set of three pre-loaded angular contact bearings)

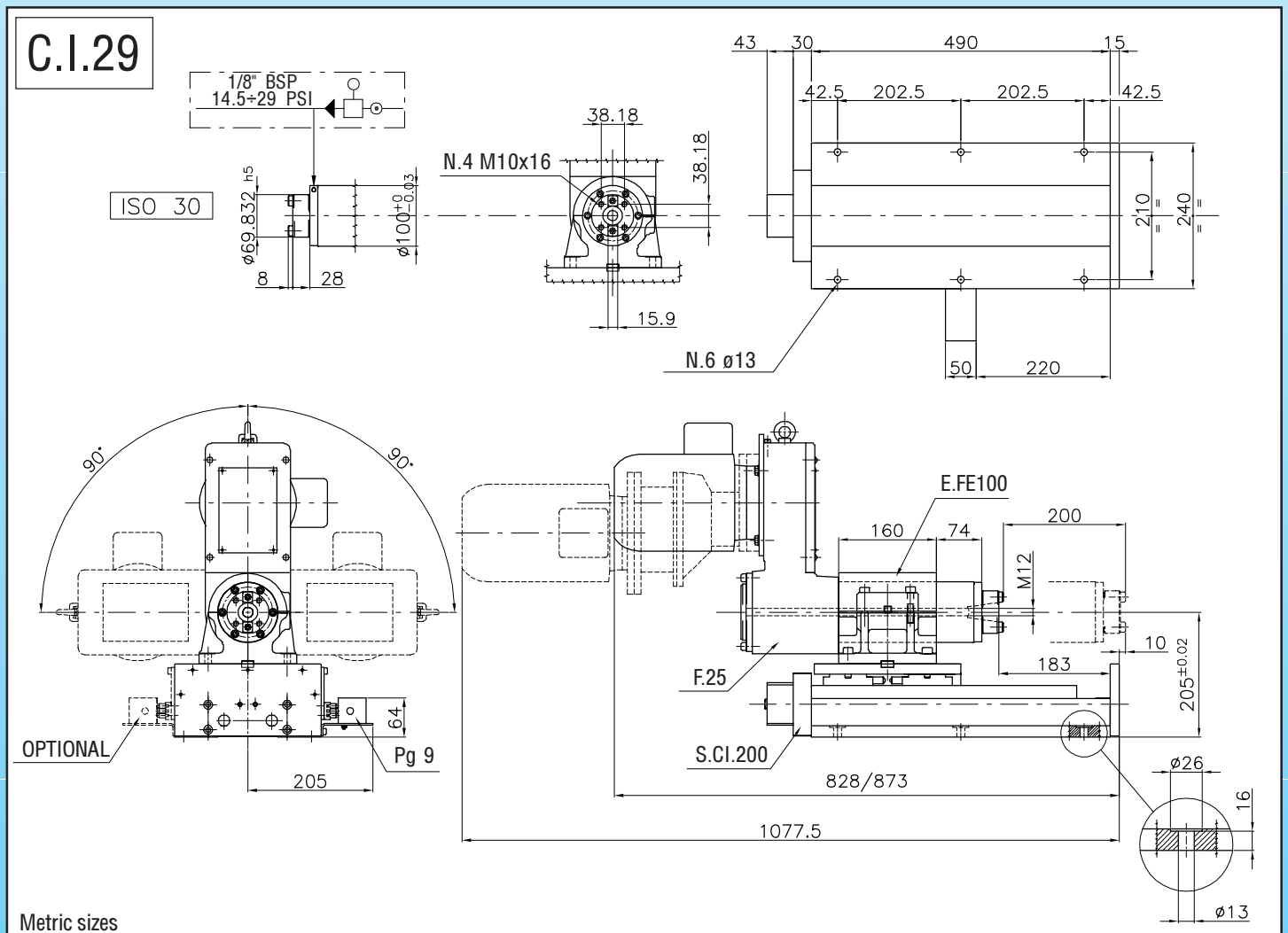
This unit is especially suitable for precision boring applications.

Unit C.PK.29 has magnetic limit switches fitted on the air cylinder.

Unit C.I.29 is supplied complete with three micro switches and adjustable cams. The switch unit is sealed and is usually fitted on the right hand side of the slide.

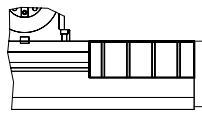
Speeds lower than 450 R.P.M. (at 50Hz) are obtained by fitting a reduction gear box "R".

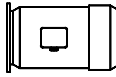
The F.25 can be fitted to other slide units (longer strokes or ball feed slides etc.).

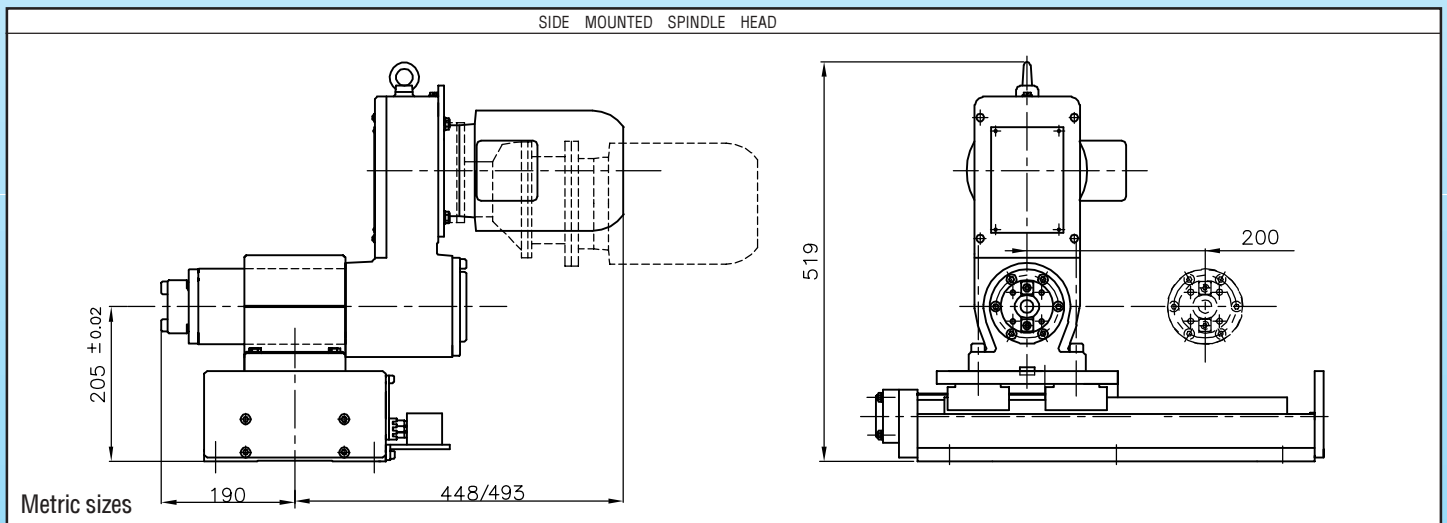


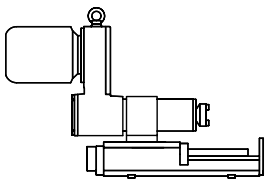
MACHINING UNIT		SPEED	
MACHINING UNIT TYPE	CODE	50 Hz	60 Hz
C.PK.29.A.RC C.I.29.A.RC	10112800 10112490	450	540
		750	900
		1150	1380
		1300	1560
		1500	1800
C.PK.29.2150.RC C.I.29.2150.RC C.PK.29.2800.RC C.I.29.2800.RC	10112801 10112491 10112802 10112492	2150	2580
		2150	2580
		2800	3360
		2800	3360
		2800	3360
C.PKR.29.B.RC C.IR.29.B.RC	10112803 10112493	90	110
		150	180
		230	275
		270	325
		310	370

BORING UNIT		SPEED	
TYPE	CODE	50 Hz	60 Hz
C.PK.29.2150.CO	10112804	2150	2580
C.I.29.2150.CO	10112494	2150	2580
C.PK.29.2800.CO	10112805	2800	3360
C.I.29.2800.CO	10112495	2800	3360
C.PK.29.3400.CO	10112806	3400	4080
C.I.29.3400.CO	10112496	3400	4080
C.PK.29.4200.CO	10112807	4200	5040
C.I.29.4200.CO	10112497	4200	5040

ACCESSORIES			
MACHINE	SLIDEWAY COVER	STROKE	CODE
SLIDE S.CPK.200 S.CI.200		200 mm (7.87")	28050040
SPINDLE HEAD F.25	PLEASE NOTE THE RANGE OF ACCESSORIES OF THE SPINDLE HEAD F.25 ON PAGE 91		

MOTORS			
	KW. 1,1	2P	80 FRAME
	KW. 1,5	4P	90 FRAME
	KW. 1,1	6P	90 FRAME
			● Other motor powers are available on request
			■
			▲



	TECHNICAL FEATURES															
	TYPE OF THRUST	TOTAL STROKE mm (inch)	DRILLING CAPACITY mm (inch)			MAX AXIAL LOAD N (lbs)	CYLINDER SECT AREA cm ² (inch ²)		THRUST N (lbs)		STANDARD COLOR RAL	PNEUMATIC PORTS	HYDRAULIC PORTS BSP-NPT	END SWITCHES RATING	MAX RUN OUT mm (inch) I.I.R.	
			MILD STEEL	R=60	ALLUMINIUM R=40		BRASS R=50	Advance	Retract	PNEUMATIC 6 bar (87 P.S.I)						HYDRAULIC 40 bar (580 P.S.I)
	C.PK.29.RC	200 (7.87")	20 (0.79")	24 (0.94")	8000 (1764)	50,2 (19,6)	45,3 (15,8)	3000 (662)	7800 (1720)	75 (165)	7035	tubing 8/10	1/4"G	250 V ac/dc	0,01 (.0004")	
	C.I.29.RC		28 (1.10")	34 (1.34")		50,2 (19,6)	45,3 (15,8)									3000 (662)
	C.PK.29.CO	200 (7.87")	See axial load			2000 (442)	50,2 (19,6)	45,3 (15,8)	3000 (662)	7800 (1720)	75 (165)	7035	tubing 8/10	1/4"G	250 V ac/dc	0,01 (.0004")
	C.I.29.CO		50,2 (19,6)	45,3 (15,8)	3000 (662)		7800 (1720)	75 (165)								

The electro-hydraulic machining unit C.36 consist in a hydraulic slide, fitted with ball guides carrying an ISO 30 cast iron body spindle head.

C.36 = F.32 (page 92) + S.CI.200 (pag.106)

The spindle is available in two different bearing configurations which make them suitable for specific applications:

MACHINING UNIT = C.36.RC
(adjustable taper roller bearings)

This unit is especially suitable for drilling and axial or radial milling applications.

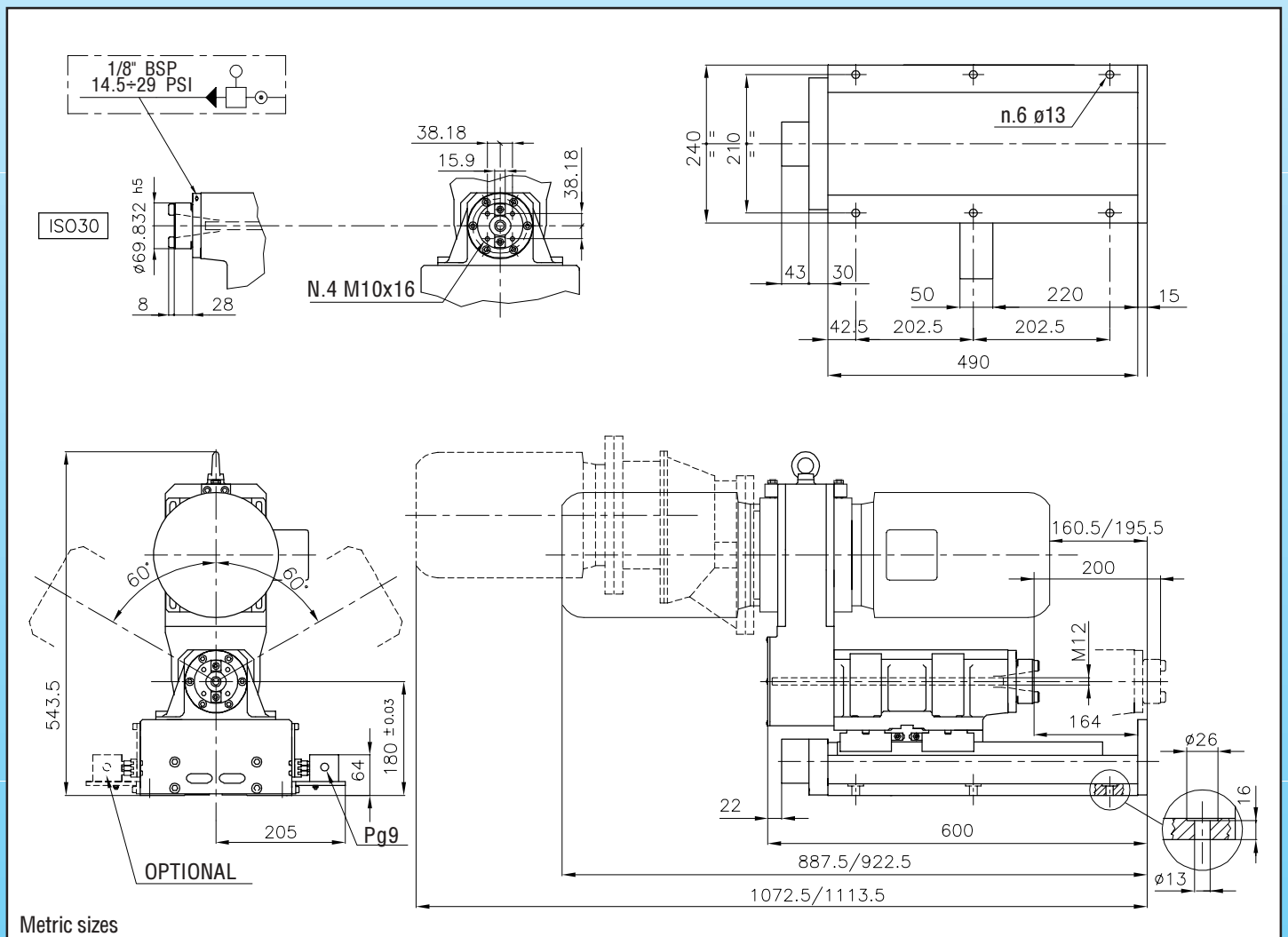
BORING UNIT = C.36.CO
(set of three pre-loaded angular contact bearings)

This unit is especially suitable for precision boring applications.

The unit is supplied complete with three micro switches and adjustable cams. The switch unit is sealed and is usually fitted on the right hand side of the slide.

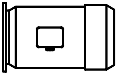
Speeds 600 R.P.M. (at 50Hz) are obtained by fitting a reduction gear "R".

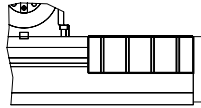
The F.32 can be fitted to other slide units (longer strokes or ball feed slides etc.).



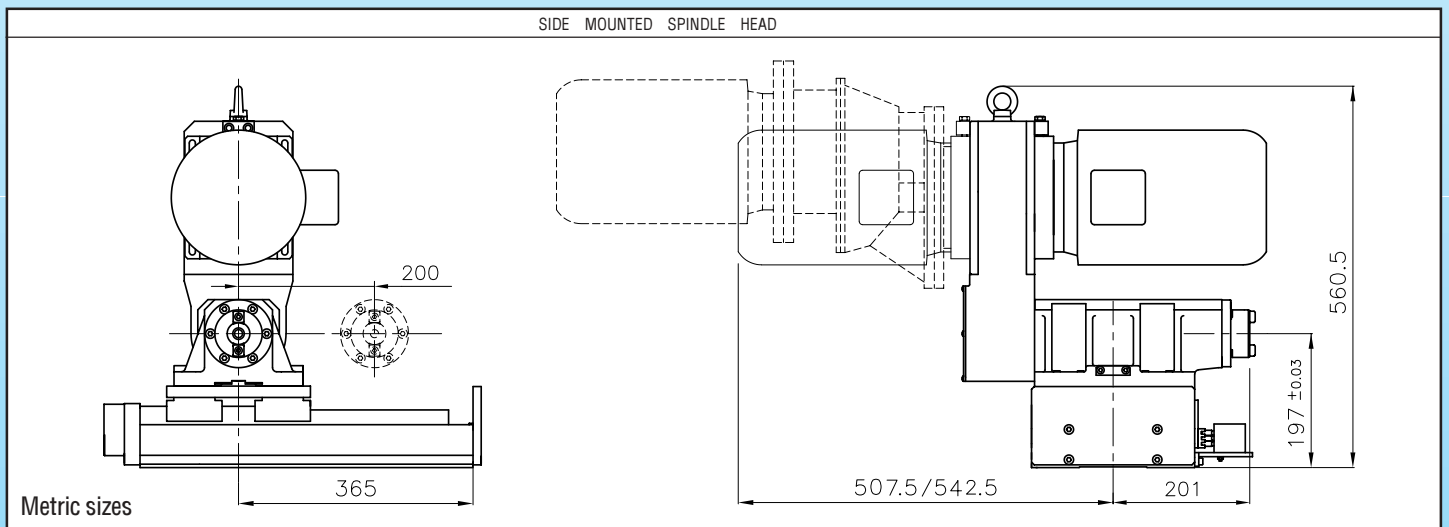
MACHINING UNIT		SPEED	
TYPE	CODE		
C.R36.A.RC	10112385	■ 130	155
		■ 220	265
		■ 330	400
		■ 430	515
C.R36.B.RC	10112386	▲ 85	100
		▲ 140	170
		▲ 215	260
		▲ 280	335
C.36.600.RC	10112380	▲ 600	720
C.36.1000.RC	10112381	■ 1000	1200
C.36.1450.RC	10112382	■ 1450	1750
C.36.2000.RC	10112383	● 2000	2400
C.36.2800.RC	10112384	● 2800	3360

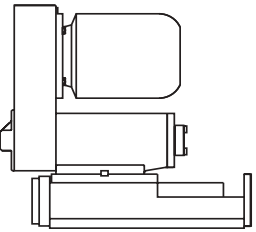
BORING UNIT		SPEED	
TYPE	CODE	50 Hz	60 Hz
C.36.1000.CO	10112390	■ 1000	1200
C.36.1450.CO	10112391	■ 1450	1750
C.36.2000.CO	10112392	● 2000	2400
C.36.2800.CO	10112393	● 2800	3360
C.36.3500.CO	10112394	● 3500	4200
C.36.4000.CO	10112395	● 4000	4800

MOTORS			
	KW. 3	2P	100 FRAME ●
	KW. 2.2	4P	100 FRAME ■
	KW. 1.5	6P	100 FRAME ▲

ACCESSORIES			
MACHINE	SLIDWAY COVER	STROKE	CODE
SLIDE S.CI.200		200	28050040
PLEASE NOTE THE RANGE OF ACCESSORIES OF THE SPINDLE HEAD F.32 ON PAGE 93			

IN CASE OF A MULTISPINDLE HEAD ASSEMBLY, PLEASE CONSULT OUR ENGINEERING OFFICE.



	TECHNICAL FEATURES													
	TOTAL STROKE mm (inch.)	DRILLING CAPACITY mm (inch)			MAX AXIAL LOAD N (lbs)	CYLINDER SECT AREA cm ² (inch ²)	THRUST N (lbs)		KG (lbs)	STANDARD COLOUR RAL	HYDRAULIC PORTS BSP-NPT	END SWITCHES RATING	MAX RUN OUT mm (inch.)T.I.R.	
		MILD STEEL	ALLUMINIUM	BRASS			40 bar (580 P.S.I.)	50 bar (725 P.S.I.)						
C.36.RC	200 (7.87")	35 (1.38")	42 (1.65")	42 (1.65")	8000 (1764)	Advance	Retract	40 bar (580 P.S.I.)	50 bar (725 P.S.I.)	85 (187)	7035	1/4"	250 V dc/ac	0.01 (.0004")
C.36.CO		See axial load			2000 (441)	19.6 (3.04")	15.8 (2.45")	7800 (1720)	9800 (2163)					

The electro-hydraulic machining unit C.39 consists in a hydraulic slide fitted, with ball guides carrying an ISO 40 cast iron body spindle head. C.39 = F.40 (page 94) + S.CI.200 (page 106). The spindle is available in two different bearing configurations which make them suitable for specific applications:

MACHINING UNIT = C.39.RC
(adjustable taper roller bearings)

This unit is especially suitable for drilling and axial or radial milling applications.

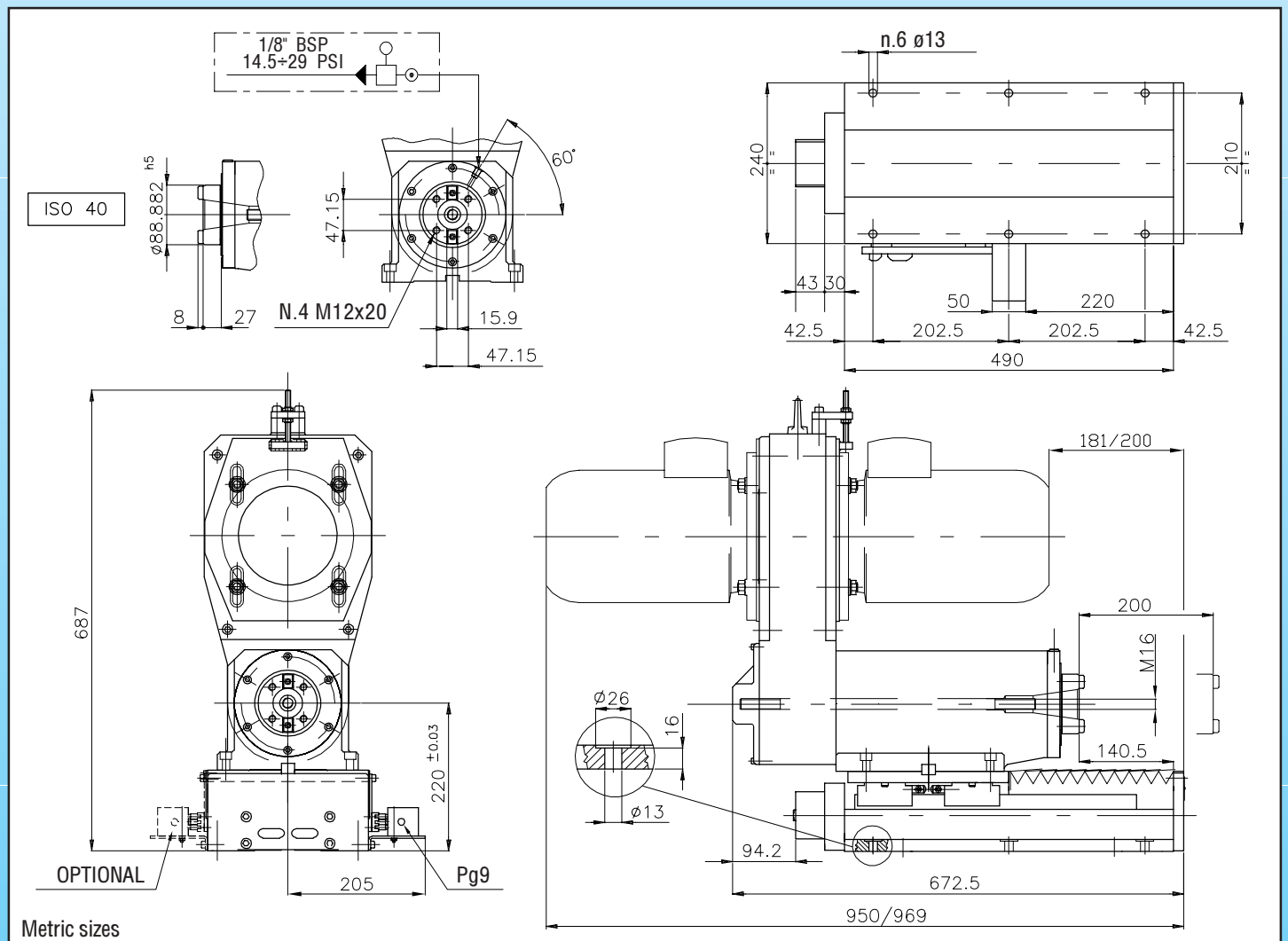
BORING UNIT = C.39.CO
(set of three pre-loaded angular contact bearings)

This unit is especially suitable for precision boring applications.

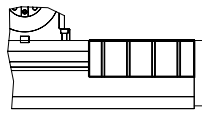
The unit is supplied complete with four micro switches and adjustable cams. The switch unit is sealed and is usually fitted on the right hand side of the slide.

Speeds lower than 600 R.P.M. (at 50Hz) are obtained by fitting a reduction gear "R".

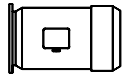
The F.40 can be fitted to other slide units (longer strokes or ball feed slides etc.).

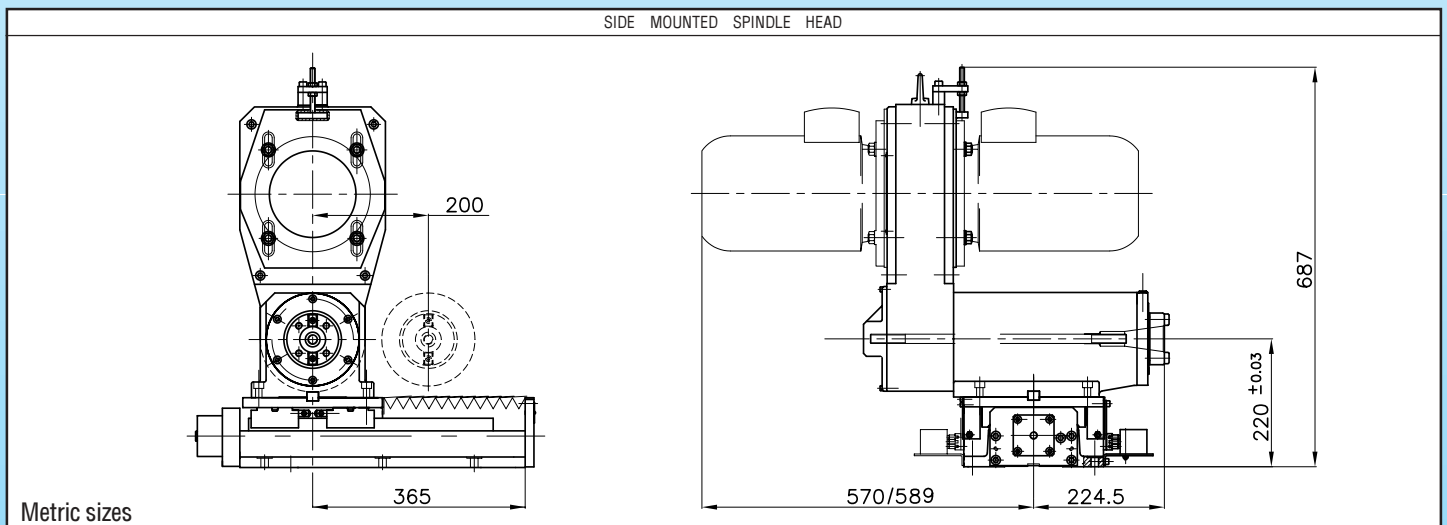


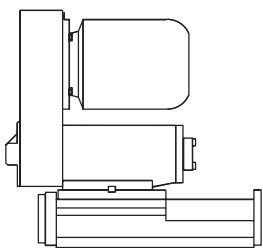
MACHINING UNIT		SPEED	
TYPE	CODE	50 Hz	60 Hz
C.39.600.RC	10112050	■ 600	720
C.39.1000.RC	10112051	■ 1000	1200
C.39.1450.RC	10112052	■ 1450	1750
C.39.2000.RC	10112053	■ 2000	2400
C.39.2800.RC	10112054	● 2800	3360
C.R39.120.RC	10112055	■ 120	145
C.R39.290.RC	10112056	■ 290	350
C.R39.400.RC	10112057	■ 400	480
BORING UNIT	CODE	SPEED	
C.39.1000.CO	10112060	■ 1000	1200
C.39.1450.CO	10112061	■ 1450	1750
C.39.2000.CO	10112062	■ 2000	2400
C.39.2800.CO	10112063	● 2800	3360
C.39.3500.CO	10112064	● 3500	4200
C.39.4000.CO	10112065	● 4000	4800

ACCESSORIES			
MACHINE	SLIDWAY COVER	STROKE	CODE
SLIDE S.CI.200		200 mm (7.87")	28050040
SPINDLE HEAD F.40	PLEASE NOTE THE RANGE OF ACCESSORIES OF THE SPINDLE HEAD F.40 ON PAGE 95		

IN CASE OF A MULTISPINDLE HEAD ASSEMBLY, PLEASE CONSULT OUR ENGINEERING OFFICE.

MOTORS			
	KW. 3	2P	FRAME 100
	KW. 2.2	4P	FRAME 100
			● Other motor powers are available on request
			■ request



	TECHNICAL FEATURES														
	TOTAL STROKE mm (inch.)	DRILLING CAPACITY mm (inch.)			MAX AXIAL LOAD N (lbs)		CYLINDER SECT AREA cm ² (inch ²)		THRUST N (lbs)		KG (lbs)	STANDARD COLOUR RAL	HYDRAULIC PORTS BSP-NPT	END SWITCHES RATING	MAX RUN OUT mm (inch) T.I.R.
	MILD STEEL R=60	ALLUMINIUM R=40	BRASS R=50	Taper roller BRGS.	Precision angular contact BRGS.	Advance	Retract	40 bar (580 P.S.I.)	50 bar (725 P.S.I.)	WEIGHT					
C.39.RC	200 (7.87")	38 (1.49")	50 (1.97")	50 (1.97")	15000 (3308)	19.6 (3.04")	15.8 (2.45")	7800 (1720)	9800 (2161)	140 (309)	7035	1/4"	250 V dc/ac	0.01 (.0004")	
C.39.CO	200 (7.87")	See axial load			3300 (728)	19.6 (3.04")	15.8 (2.45")	7800 (1720)	9800 (2161)	140 (309)	7035	1/4"	250 V dc/ac	0.01 (.0004")	

The electro-hydraulic machining unit C.46 consists in a hydraulic slide fitted, with ball guides carrying an ISO 40 cast iron body spindle head.

C.46 = F.40 with 112 frame motor (page 94) + S.TI.200 (page 108).

The spindle is available in two different bearing configurations which make them suitable for specific applications:

MACHINING UNIT = C.46.RC
(adjustable taper roller bearings)

This unit is especially suitable for drilling and axial or radial milling applications.

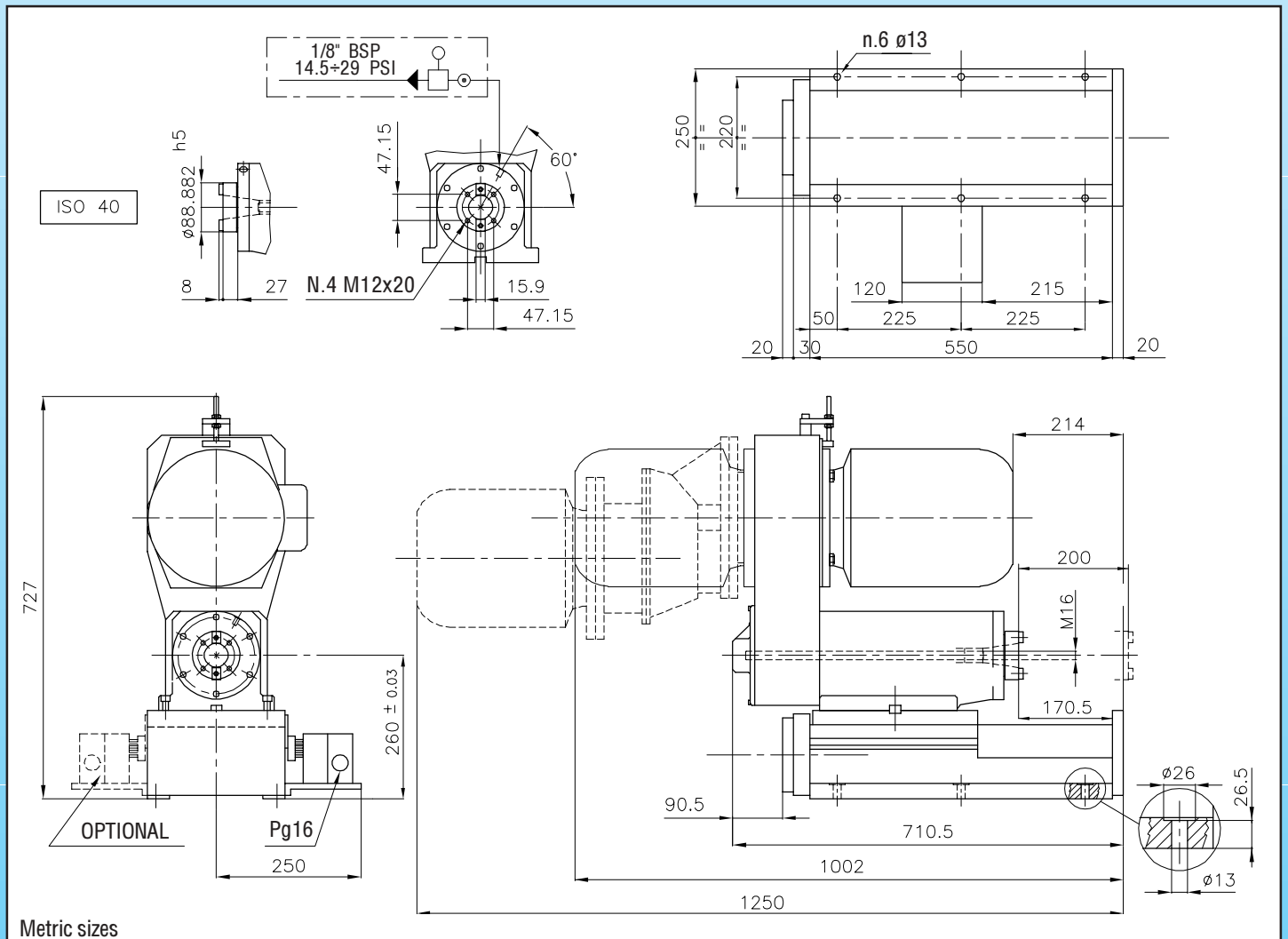
BORING UNIT = C.46.CO
(set of three pre-loaded angular contact bearings)

This unit is especially suitable for precision boring applications.

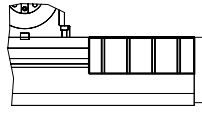
The unit is supplied complete with four micro switches and adjustable cams. The switch unit is sealed and is usually fitted on the right hand side of the slide.

Speeds lower than 600 R.P.M. (at 50Hz) are obtained by fitting a reduction gear "R".

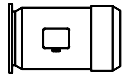
The F.40 can be fitted to other slide units (longer strokes or ball feed slides etc.).

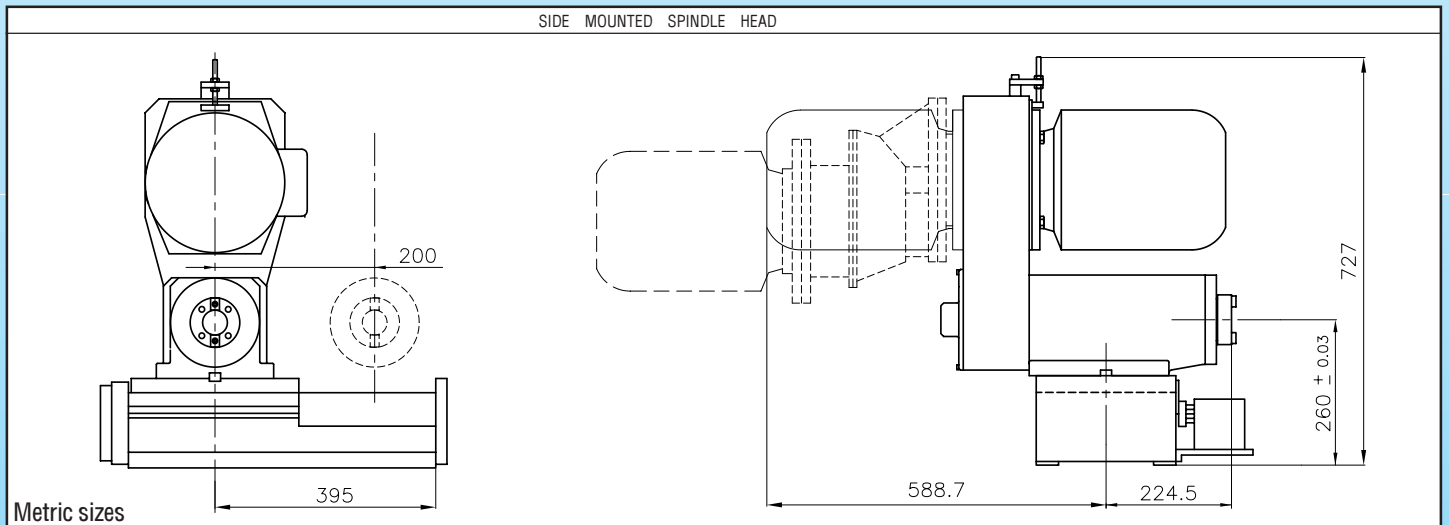


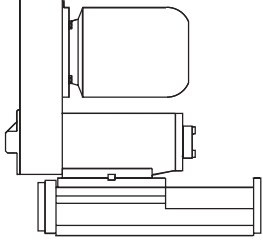
MACHINING UNIT		SPEED	
TYPE	CODE	50 Hz	60 Hz
C.46.600.RC	10112530	■ 600	720
C.46.1000.RC	10112531	■ 1000	1200
C.46.1450.RC	10112532	■ 1450	1750
C.46.2000.RC	10112533	■ 2000	2400
C.46.2800.RC	10112534	● 2800	3360
C.R46.120.RC	10112520	■ 120	145
C.R46.290.RC	10112521	■ 290	350
C.R46.400.RC	10112522	■ 400	480
BORING UNIT	CODE	SPEED	
C.46.1000.CO	10112560	■ 1000	1200
C.46.1450.CO	10112561	■ 1450	1750
C.46.2000.CO	10112562	■ 2000	2400
C.46.2800.CO	10112563	● 2800	3360
C.46.3500.CO	10112564	● 3500	4200
C.46.4000.CO	10112565	● 4000	4800

ACCESSORIES			
MACHINE	SLIDEWAY COVER	STROKE	CODE
SLIDE S.TI.200		200 mm (7.87")	28050044
SPINDLE HEAD F.40	PLEASE NOTE THE RANGE OF ACCESSORIES OF THE SPINDLE HEAD F.40 ON PAGE 95		

IN CASE OF A MULTISPINDLE HEAD ASSEMBLY, PLEASE CONSULT OUR ENGINEERING OFFICE.

MOTORS				
	KW. 4	2P	FRAME 112	●
	KW. 4	4P	FRAME 112	■



	TECHNICAL FEATURES															
	TOTAL STROKE mm (inch.)	DRILLING CAPACITY mm (inch)			MAX AXIAL LOAD N (lbs)		CYLINDER SECT AREA cm ² (inch ²)		THRUST N (lbs)		KG (lbs)	STANDARD COLOUR RAL	HYDRAULIC PORTS BSP-NPT	END SWITCHES RATING	MAX RUN OUT mm (inch) T.I.R.	
	MILD STEEL R=60	ALLUMINIUM R=40	BRASS R=50	Taper roller BRGS.	Precision angular contact BRGS.	Advance	Retract	40 bar (580 P.S.I.)	50 bar (725 P.S.I.)	WEIGHT						
C.46.RC	200 (7.87")	46 (1.81")	60 (2.36")	60 (2.36")	15000 (3308)			31.17 (4.82")	21.13 (3.28")	12400 (2734)	15500 (3418)	195 (430)	7035	1/4"	250 V dc/ac	0.01 (.0004")
C.46.CO	200 (7.87")	See axial load				3300 (728)		31.17 (4.82")	21.13 (3.28")	12400 (2734)	15500 (3418)	195 (430)	7035	1/4"	250 V dc/ac	0.01 (.0004")

The electro-hydraulic machining unit C.50 consists of a hydraulic slide, fitted with ball guides carrying an ISO 50 cast iron body spindle head.
 C.50 = F.50 (page 96) + S.TI.300 (page 108).
 The spindle is available in two different bearing configurations which make them suitable for specific applications i.e. :

MACHINING UNIT = C.50.RC

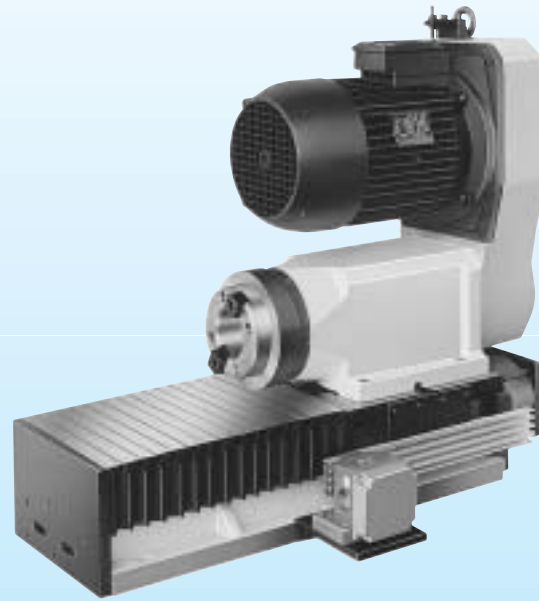
(adjustable taper roller bearings)

This unit is especially suitable for drilling and axial or radial milling applications.

BORING UNIT = C.50.CO

(set of three pre-loaded angular contact bearings)

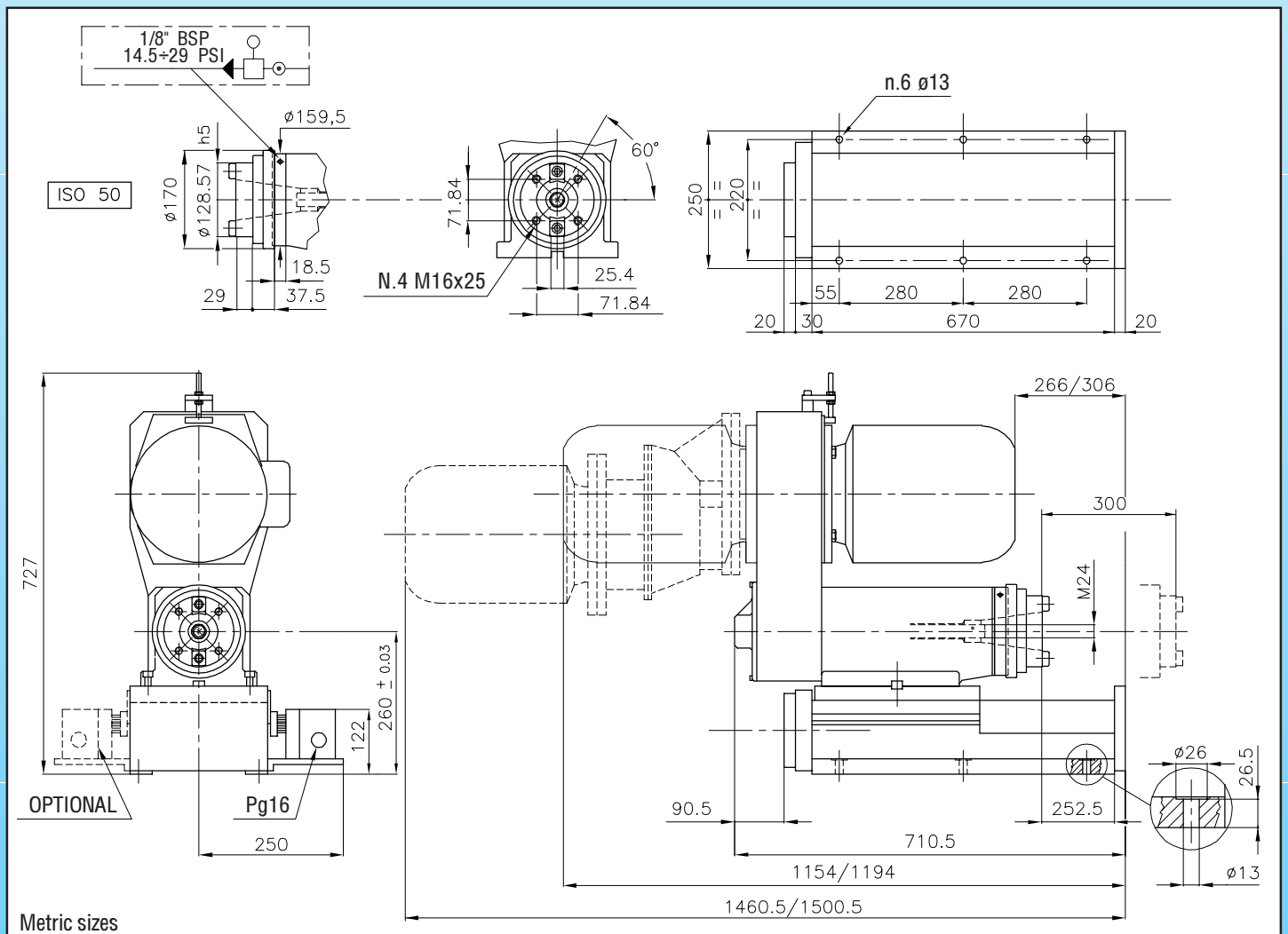
This unit is especially suitable for precision boring applications.



The unit is supplied complete with four micro switches and adjustable cams. The switch unit is sealed and is usually fitted on the right hand side of the slide.

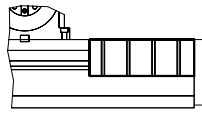
Speeds lower than 600 R.P.M. (at 50Hz) are obtained by fitting a reduction gear "R".

The F.40 can be fitted to other slide units (longer strokes or ball feed slides etc.).

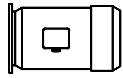


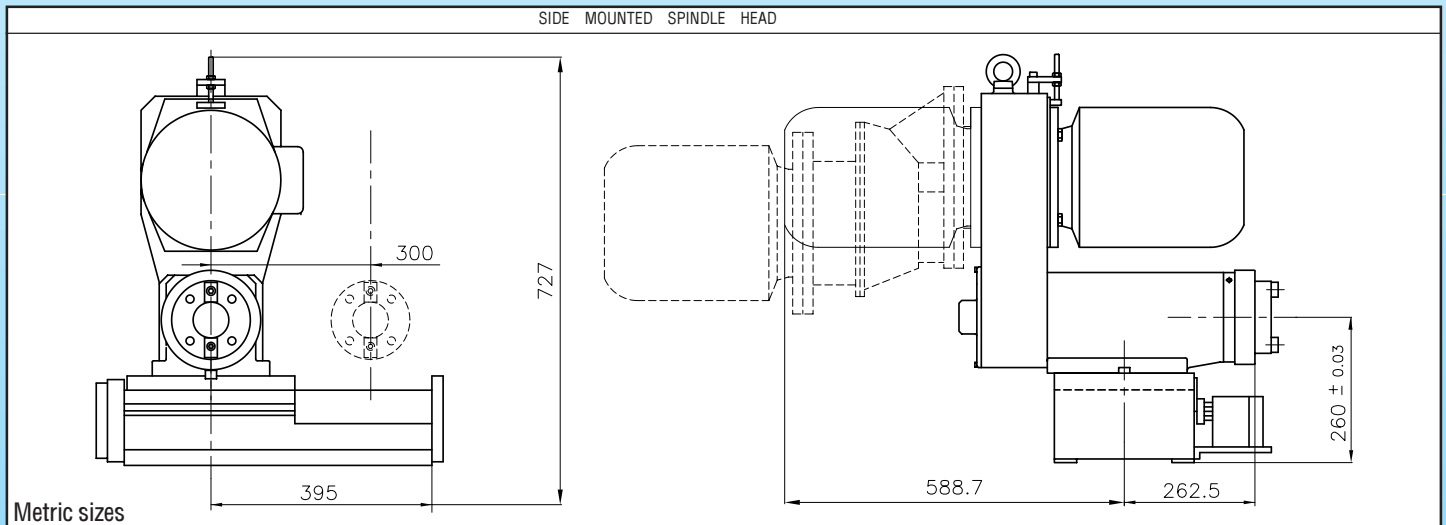
MACHINING UNIT		SPEED	
TYPE	CODE	50 Hz	60 Hz
C.50.600.RC	10112630	■ 600	720
C.50.1000.RC	10112631	■ 1000	1200
C.50.1450.RC	10112632	■ 1450	1750
C.50.2000.RC	10112633	■ 2000	2400
C.50.2800.RC	10112634	▲ 2800	3360
C.R50.120.RC	10112620	■ 120	145
C.R50.290.RC	10112621	■ 290	350
C.R50.400.RC	10112622	■ 400	480

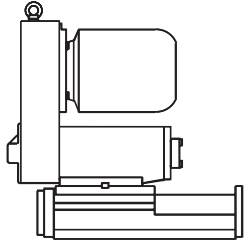
BORING UNIT		SPEED	
TYPE	CODE	50 Hz	60 Hz
C.50.1000.CO	10112660	■ 1000	1200
C.50.1450.CO	10112661	■ 1450	1750
C.50.2000.CO	10112662	■ 2000	2400
C.50.2800.CO	10112663	▲ 2800	3360
C.50.3500.CO	10112664	▲ 3500	4200
C.50.4000.CO	10112665	▲ 4000	4800

ACCESSORIES			
MACHINE	SLIDEWAY COVER	STROKE	CODE
SLIDE S.TI.300		300 mm (11.81")	28050046
SPINDLE HEAD F.50	PLEASE NOTE THE RANGE OF ACCESSORIES OF THE SPINDLE HEAD F.50 ON PAGE 35		

IN CASE OF A MULTISPINDLE HEAD ASSEMBLY, PLEASE CONSULT OUR ENGINEERING OFFICE.

MOTORS			
	KW. 5.5 2P	FRAME 132 ▲	Other motor powers are available on request
	KW. 5.5 4P	FRAME 132 ■	



	TECHNICAL FEATURES													
	TOTAL STROKE mm (inch.)	DRILLING CAPACITY mm (inch)			MAX AXIAL LOAD N (lbs)	CYLINDER SECT AREA cm ² (inch ²)		THRUST N (lbs)		WEIGHT KG (lbs)	STANDARD COLOUR RAL	HYDRAULIC PORTS BSP-NPT	END SWITCHES RATING	MAX RUN OUT mm (inch) T.I.R.
		MILD STEEL R=60	ALLUMINIUM R=40	BRASS R=50		Advance	Retract	40 bar (580 P.S.I.)	50 bar (725 P.S.I.)					
C.50.RC	300 (11.81")	50 (1.97")	60 (2.36")	60 (2.36")	20000 (4410)	31.17 (4.82")	21.13 (3.28")	12400 (2734)	15500 (3418)	235 (518)	7035	1/4"	250 V dc/ac	0.01 (.0004")
C.50.CO	300 (11.81")	See axial load			8000 (1764)	31.17 (4.82")	21.13 (3.28")	12400 (2734)	15500 (3418)	235 (518)	7035	1/4"	250 V dc/ac	0.01 (.0004")

S.CV. 201 + S.CV. 301 + F.25.RC

X Stroke = 200 mm (7.87")

Y Stroke = 300mm (11.81")

Spindle head power = 2,2 Kw

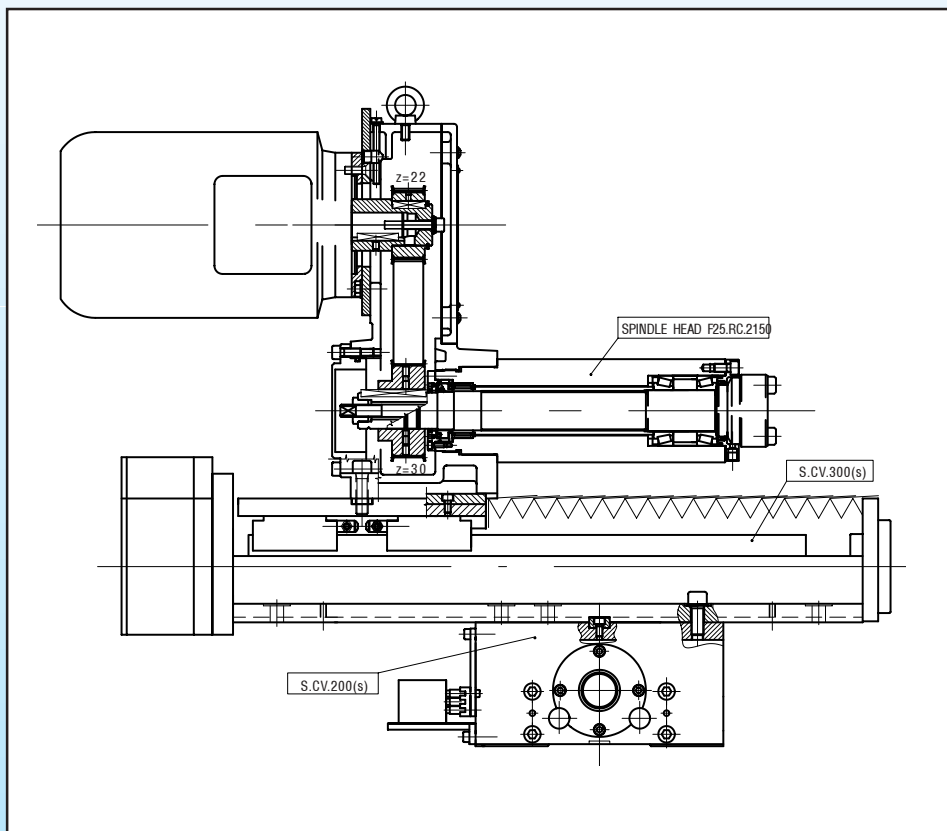
Drive = 25mm dia x 5 (.98" dia x .20") ball screw

Linear pads = 4 ball rows

Dedicated motor plates

Pads lubrication = centralized

Multi-switch pack on X-Y



S.TI. 200 + F.32 + F.32

Stroke = 200 mm (7.87")

Spindle heads power = 1,5 Kw+1,5 Kw

Linear pads = 4 ball rows

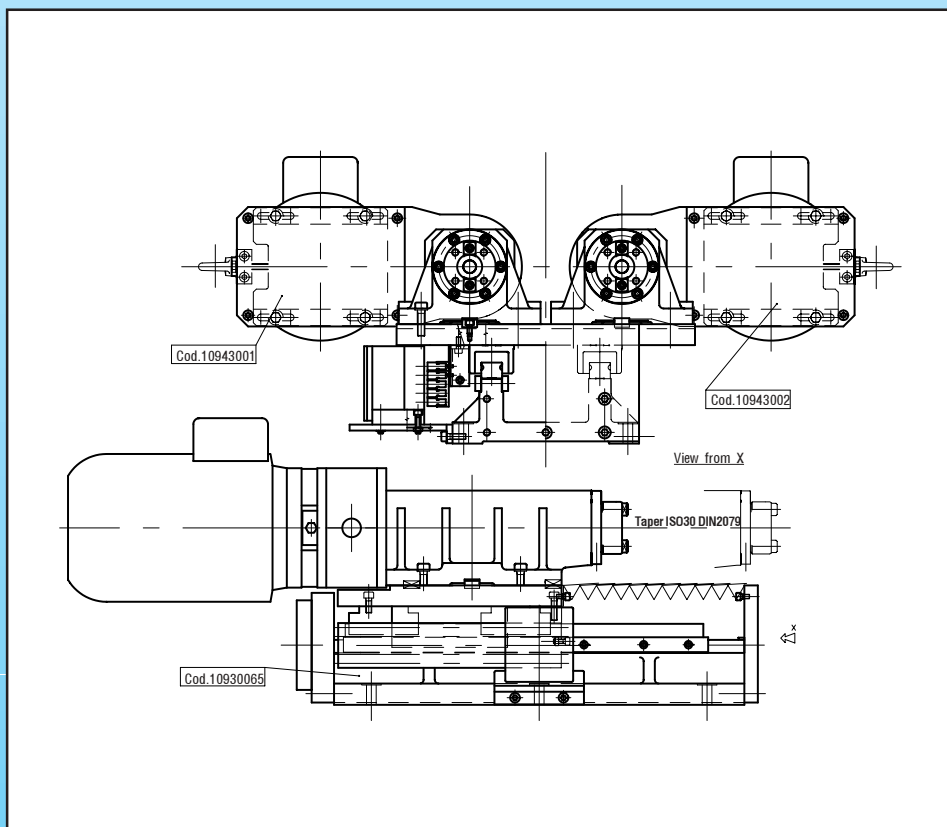
Spindles centres = 200 mm (7.87")

Dedicated motor plates

Feed = hydraulic

Pads lubrication = centralized

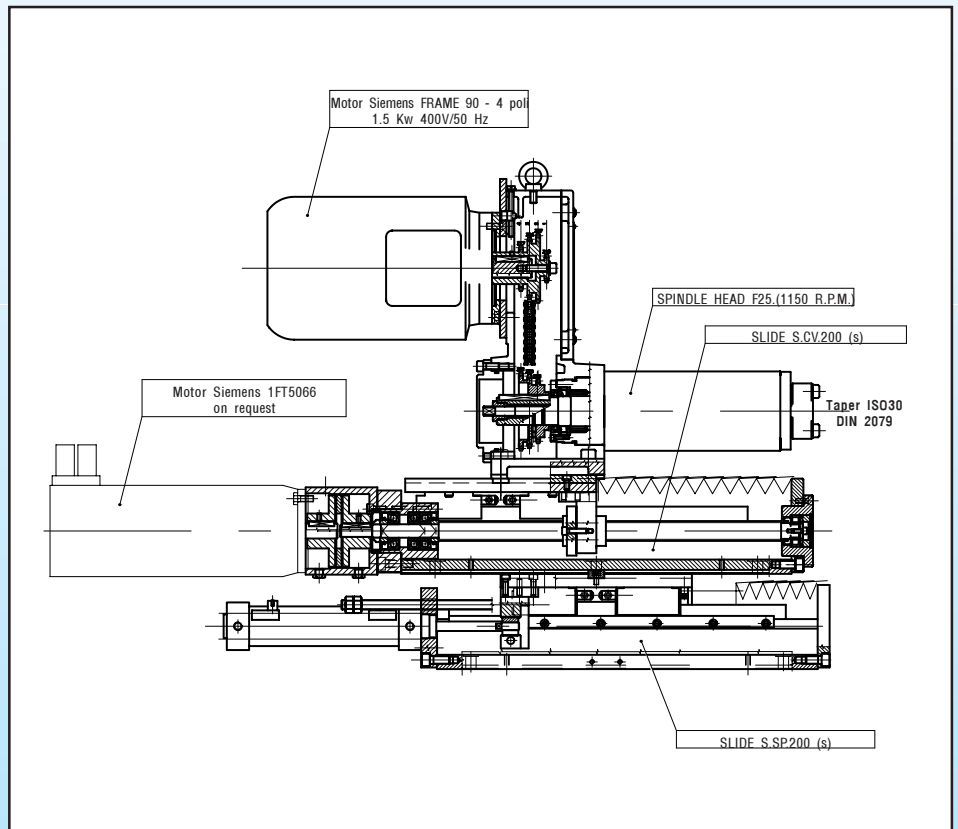
Multi-switch pack



S.CV. 201 + S.SP. 201 + F.25

Pneumatic stroke = 200 mm (7.87")
 Controlled stroke = 200mm (7.87")

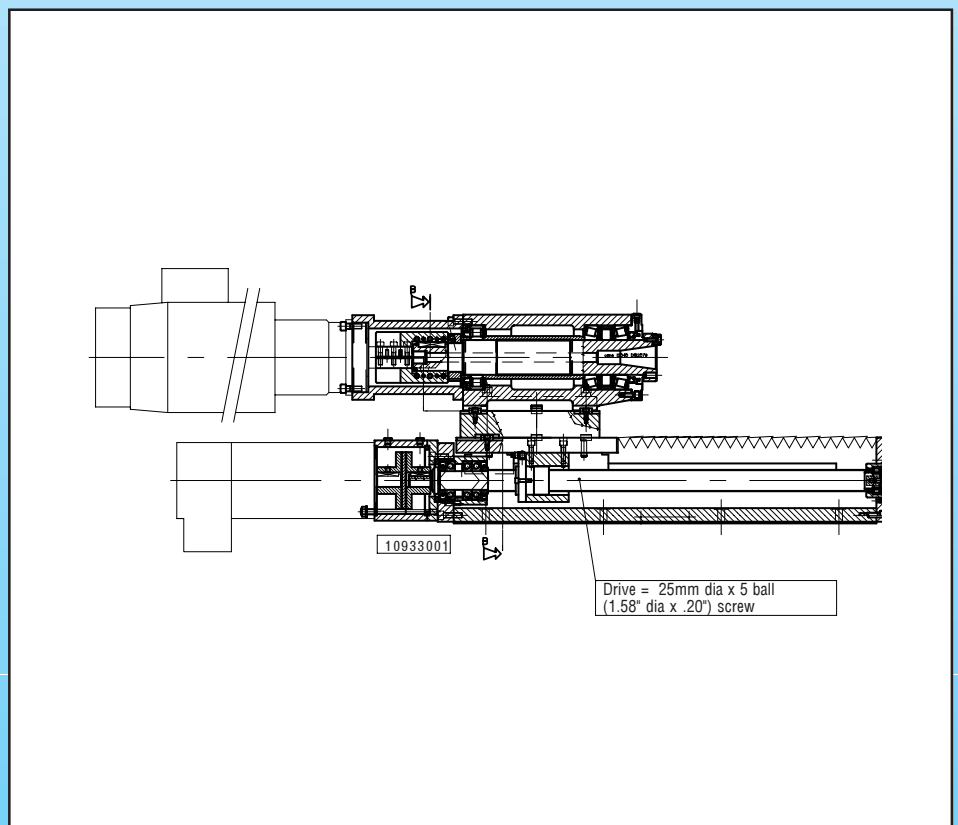
Spindle head power = 1,5 kW
 Fast travel (pneumatic) + feed (ball screw)
 Linear pads = 4 ball rows
 Dedicated motor plate on controlled axis
 Pads lubrication = centralized
 Multi-switch pack on both slide units



S.TV. 401 + F.40

Stroke = 400 mm (15.75")

Spindle head power = 7 kW
 Feed = 40mm dia x 5 (1.58" dia x .20") ball screw
 Linear pads = 4 ball rows
 Dedicated spindle and slide motor plates
 Pads lubrication = centralized
 Multi-switch pack



S.CPK.200 + S.CV.201 + F.32

Special flattening unit

X pneumatic stroke = 100 mm (3.94")

Z pneumatic stroke = to define

Spindle head power = 2,2 Kw

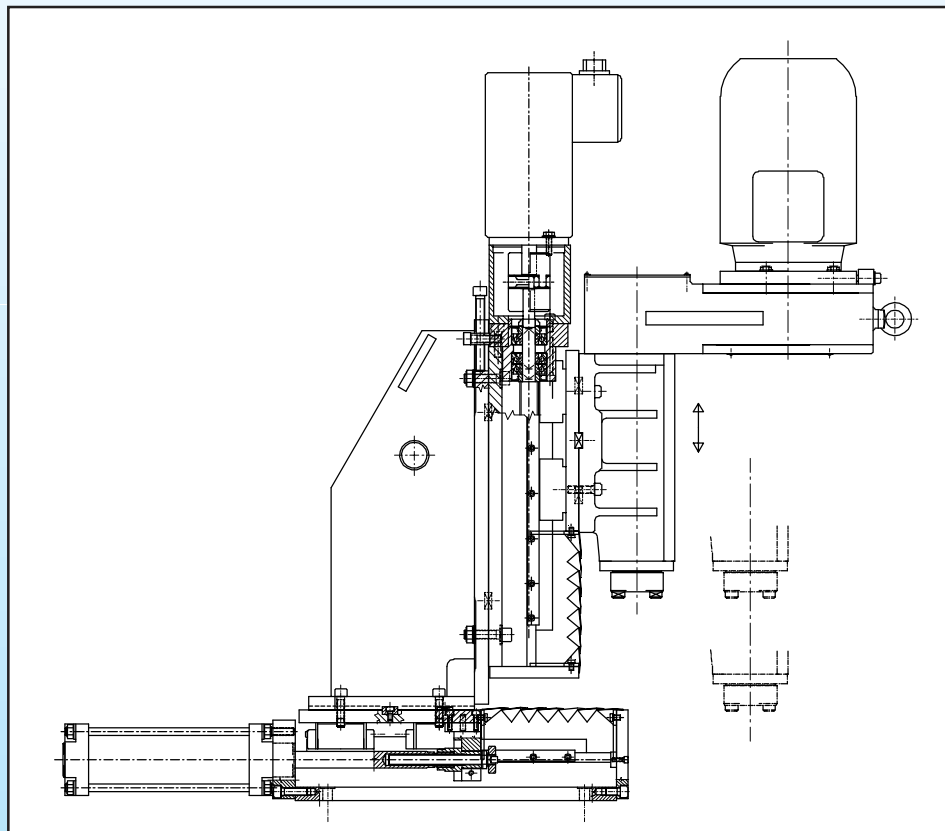
Feed = pneumatic + 25 mm dia x 5 (.98" dia x .20") ball screw

Linear pads = 4 ball rows

Dedicated motor plays on axis Z

Pads lubrication = centralized

Multi-switch pack on axis Z



T.NC.301+S.TV.401 + S.CPK.200 + F.32

Special grinding unit

Z pneumatic stroke = 100 mm (3.94")

Y controlled stroke = 100 mm (3.94")

Spindle head power = 2,2 Kw

Feed = pneumatic + 25 mm dia x 5 (.98" dia x .20") and 40 mm dia x 5 (1.57" dia x .20") ball screw

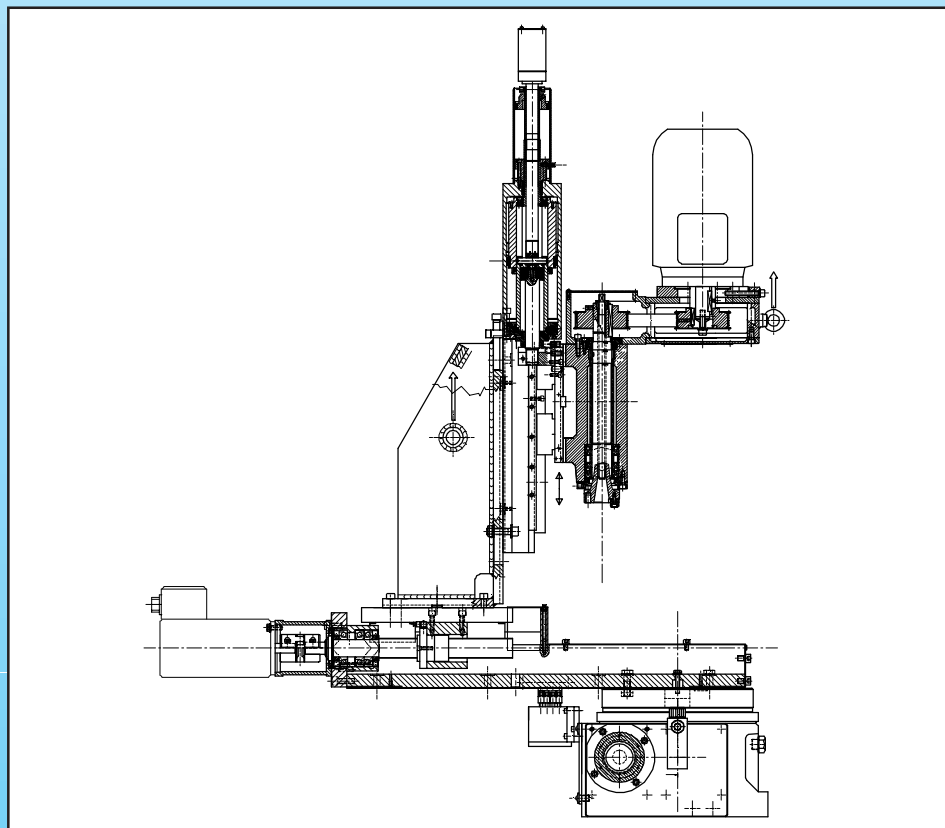
Linear pads = 4 ball rows

Dedicated motor plays on axis X

Pads lubrication = centralized

Multi-switch pack on axis X and on rotary table

Brake motor of rotary table = 0.37 Kw

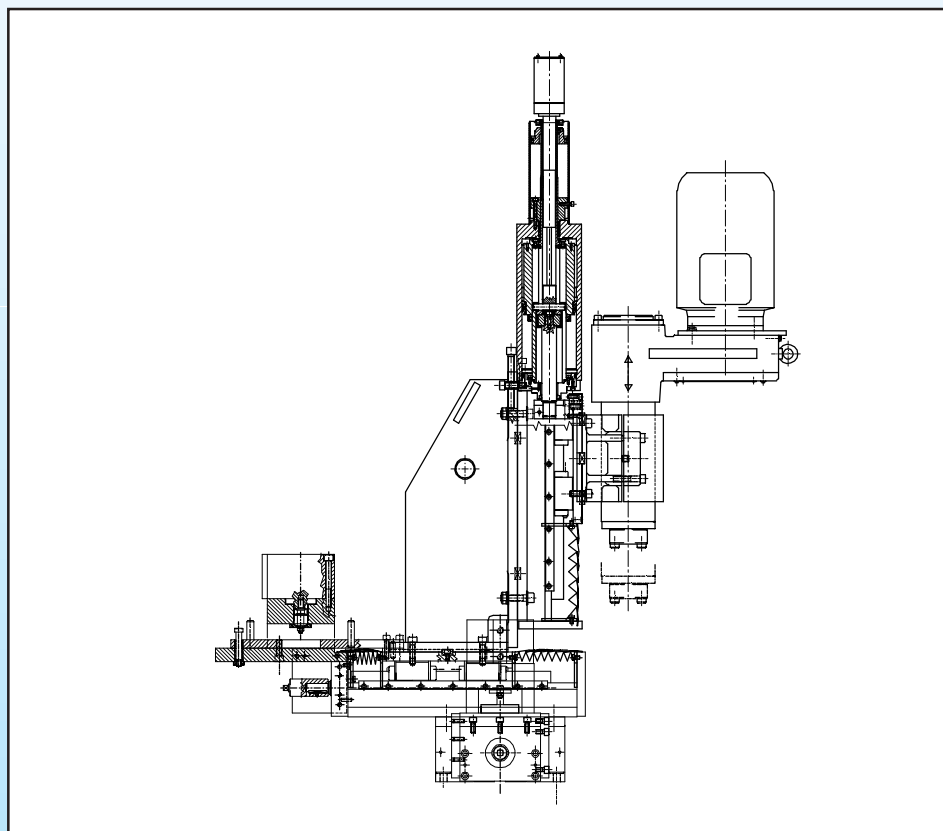


n.2 S.CV.201 + S.CPK.200 + F.25

Special boring unit

Z pneumatic stroke = 100 mm (3.94")
X, Y controlled stroke = 25 mm (.98")

Spindle head power = 1,5 Kw
Feed = pneumatic + 25 mm dia x 5 (.98" dia x .20") ball screw
Linear pads = 4 ball rows
Pads lubrication = centralized
Multi-switch pack on axis Z



S.TV.201 + S.CV.301 + F.32

Special boring unit

X stroke = 200 mm (7.87")
Z stroke = 300 mm (11.81")

Spindle head power = 2,2 Kw
Feed = 32 mm dia x 5 (1.26" dia x .20") and 40 mm dia x 5 (1.58" dia x .20") ball screw
Dedicated motor plays on axis X and Z
Pads lubrication = centralized
Multi-switch pack on either slides

