

EUROMA[®]

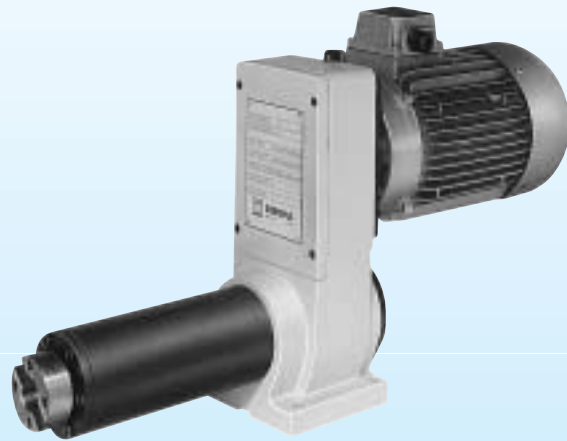
SPINDLES



Spindle head F.25 has an ISO 30 tool holder. It can be fitted to the slide unit by means of collar E.FE100.

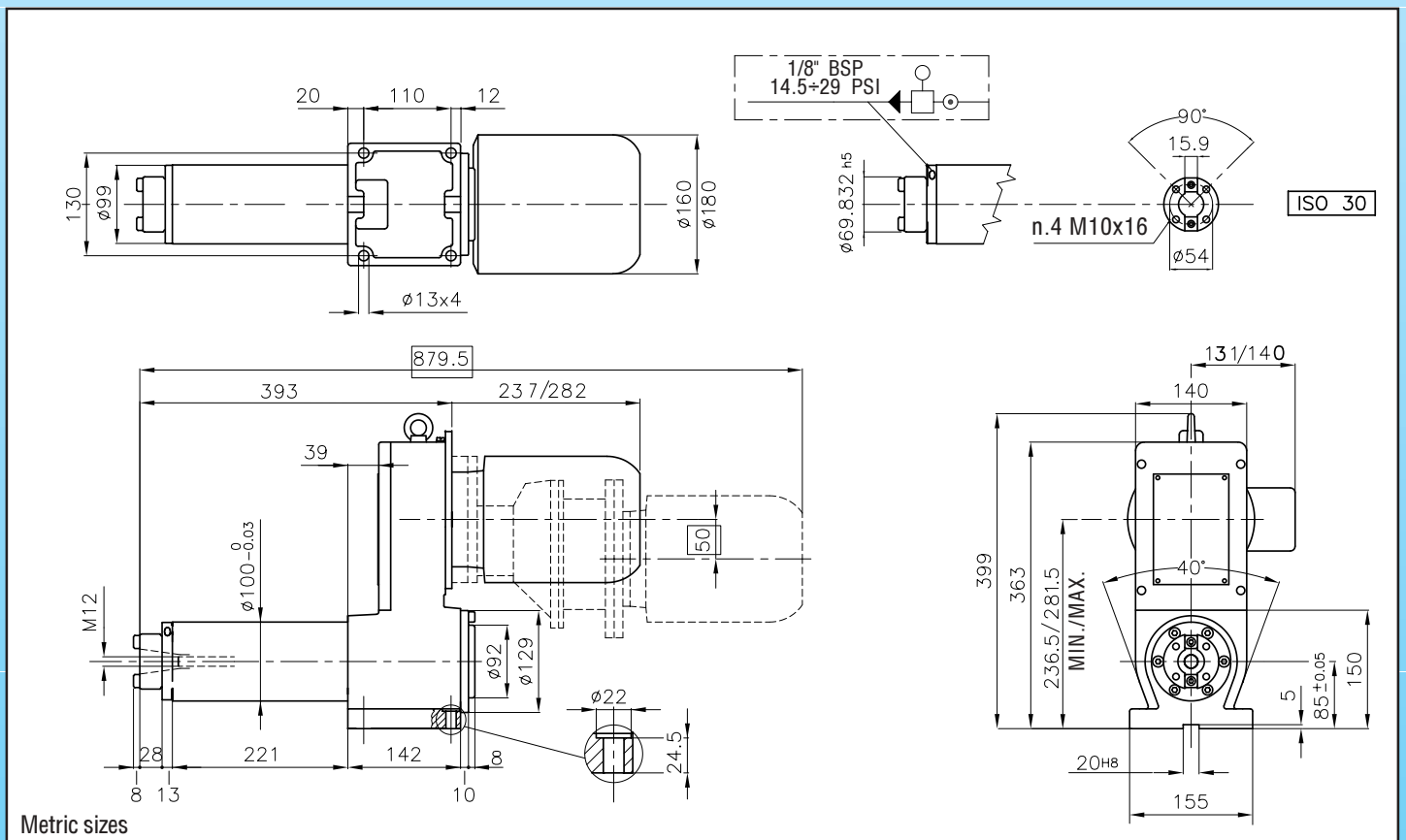
On **drilling and milling** (axial or radial) applications, model **F.25.RC** is to be used as it is fitted with adjustable taper roller bearings.

On **boring** applications, model **F.25.CO** is to be used as it is fitted with a pack of three pre-loaded precision angular contact bearings.



SPINDLE HEADS		SPEED	
TYPE	CODE	50 Hz	60 Hz
F.25.A.RC	10108436	■ 450	540
		750	900
		1150	1380
		1300	1560
		1500	1800
F.25.2150.RC	10108430	● 2150	2580
		2800	3360
F.25.2800.RC	10108435	● 2150	2580
		2800	3360
F.R25.B.RC	10108400	▲ 90	110
		150	180
		230	275
		270	325
		310	370
F.25.2150.CO	10108448	● 2150	2580
		2800	3360
F.25.2800.CO	10108450	● 2800	3360
		3400	4080
F.25.3400.CO	10108452	● 3400	4080
F.25.4200.CO	10108455	● 4200	5040

F.25	TECHNICAL FEATURES									
	DRILLING CAPACITY mm (inch)		MAX. AXIAL THRUST N (lbs)		MOTOR (IP 55 protection)			WEIGHT Kg (lbs)	STANDARD COLOUR RAL	MAX RUNOUT mm (inch) T.I.R.
	MILD STEEL	ALLUMINIUM BRASS	TAPER ROLLER	ANGULAR CONTACT	KW 1.1	2P - FRAME 80				
	R=60	R=40 R=50				4P - FRAME 90				
						6P - FRAME 90				
	28 (1.10")	34 (1.34")	8000 (1764)	2000 (441)	●	■	▲	30 (66)	7035	0.01 (.0004")



ACCESSORIES

MACHINING UNIT WITHOUT MOTOR		TYPE	CODE
		F.25.RC max speed 3000 R.P.M.	10108462
		F.25.CO max speed 5000 R.P.M.	10108464

Metric sizes

MOTOR WITH INTEGRATED INVERTER	TYPE	CODE
<p>motor + inverter + EMI filter + servovent.</p>	MII90L4 B14 4 poles 3 phase 380/440 V 50-60 Hz 1,5 Kw (A)nom. 4,2 (A)max 10,5 IP 55	Motore standard 43053005 Optional A 28012005 Optional B 28012006

Metric sizes

OPTIONAL

A

B

- wired
- ON/OFF, clockwise /
conter clockwise rotation

- univرسال remote key pad
control, diagnostics

COLLAR	TYPE	CODE
	E.FE100	10410197

Metric sizes

IF COLLAR IS USED UNIT SHOULD BE ORDERED WITHOUT FEET

FLANGE FOR MULTI-SPINDLE HEAD	NOTE
	Supplied with head

Metric sizes

SPINDLE ROTATION CONTROL	NOTE
	Please consult engineering office

Metric sizes

COOLANT THRU SPINDLE	TYPE	CODE
	—	28010091

Metric sizes

FROM ISO 30 DIN 2080 TO TR 16 DIN 55058	TYPE	CODE
	—	10961002

Metric sizes

UNIT WITHOUT FEET	TYPE	CODE
	—	M9910022

Metric sizes

FROM ISO 30 DIN 2080 TO ER 32	TYPE	CODE
	A	10961003
	B	445301..
	C	44550116

Metric sizes

Spindle head F.32 is designed to be mounted on "S" series slide units. Tool holder is ISO 30. Different spindle bearing options are available to suit machining applications.

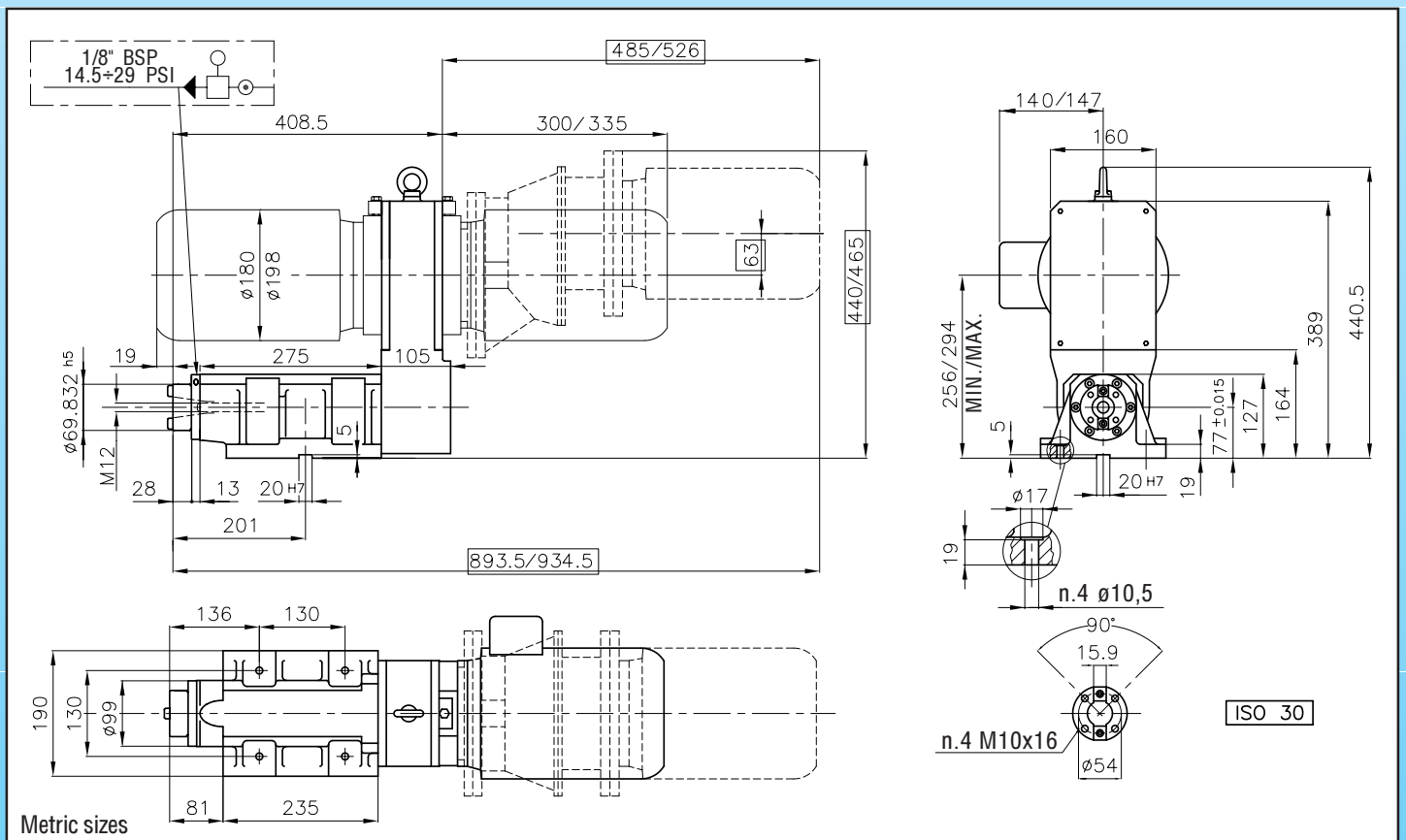
On **drilling and milling** (axial or radial) application, model **F.32.RC** is to be used as it is fitted with adjustable taper roller bearing.

On **boring** application, model **F.32.CO** is to be used as it is fitted with a pack of three pre-loaded precision angular contact bearings.



SPINDLE HEAD		SPEED	
TYPE	CODE	50 Hz	60 Hz
F.R32.A.RC	10108600	■ 130	155
		■ 220	265
		■ 330	400
		■ 430	515
F.32.600.RC	10108615	▲ 600	720
F.32.1000.RC	10108620	■ 1000	1200
F.32.1450.RC	10108625	■ 1450	1750
F.32.2000.RC	10108630	● 2000	2400
F.32.2800.RC	10108635	● 2800	3360
F.R32.B.RC	10108605	▲ 85	100
		▲ 140	170
		▲ 215	260
		▲ 280	335
F.32.1000.CO	10108650	■ 1000	1200
F.32.1450.CO	10108655	■ 1450	1750
F.32.2000.CO	10108660	● 2000	2400
F.32.2800.CO	10108665	● 2800	3360
F.32.3500.CO	10108670	● 3500	4080
F.32.4000.CO	10108675	● 4000	5040

TECHNICAL FEATURES													
DRILLING CAPACITY mm (inch)	MAX. AXIAL THRUST N (lbs)			MOTOR (IP 55 Protection)			Kg (lbs)	STANDARD COLOUR RAL	MAX RUNOUT mm (inch) T.I.R.				
	R=60	R=40	R=50	STANDARD FRAME 90		OPTIONAL FRAME 100							
MILD STEEL	ALLUMINIUM	BRASS	TAPER ROLLER	ANGULAR CONTACT	2 P	4 P	6 P	2 P	4 P	6 P			
F.32	35 (1.34")	42 (1.65")	8000 (1764)	2000 (441)	●	■	▲	●	■	▲	40 (88)	7035	0.01 (.0004")



ACCESSORIES

MACHINING UNIT WITHOUT MOTOR		TYPE	CODE
<p>Metric sizes</p>		F.32.RC max speed 3000 R.P.M.	10108662
		F.32.CO max speed 5000 R.P.M.	10108664

MOTOR WITH INTEGRATED INVERTER	TYPE	CODE
<p>motor + inverter + EMI filter + servovent.</p> <p>Metric sizes</p>	M1190L4 B14 4 poles 3 phase 380/440 V 50-60 Hz 1,5 Kw (A)nom. 4,2 (A)max 10,5 IP 55	Standard motor 43053006
<p>A</p> <ul style="list-style-type: none"> - wired - ON/OFF, clockwise / conter clockwise rotation 	<p>B</p> <ul style="list-style-type: none"> - universal remote key pad control, diagnostics 	Optional A 28012005 Optional B 28012006

MOTOR POSITION	NOTE
<p>FRONT VIEW</p>	To specify with order. No added cost.

FLANGE FOR MULTISPINDLE HEAD	TYPE	CODE
<p>Metric sizes</p>	RC CO	M9910035 M9910036

MOTOR POSITION	NOTE
	To specify with order. No added cost.

COOLANT THRU SPINDLE	TYPE	CODE
<p>Metric sizes</p>	—	28010092

FROM ISO 30 DIN 2080 TO TR 16 DIN 55058	TYPE	CODE
<p>Metric sizes</p>	—	10961002

SPINDLE ROTATION CONTROL	NOTE
<p>Metric sizes</p>	Please consult engineering office

FROM ISO 30 DIN 2080 TO ER 32	TYPE	CODE
<p>Metric sizes</p>	A	10961003
	B	445301..
	C	44550116

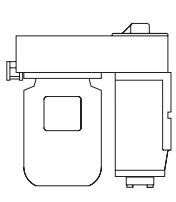
Spindle head F.40 is designed to be mounted on "S" series slide units. Tool holder is ISO 40. Different spindle bearing options are available to suit machining applications.

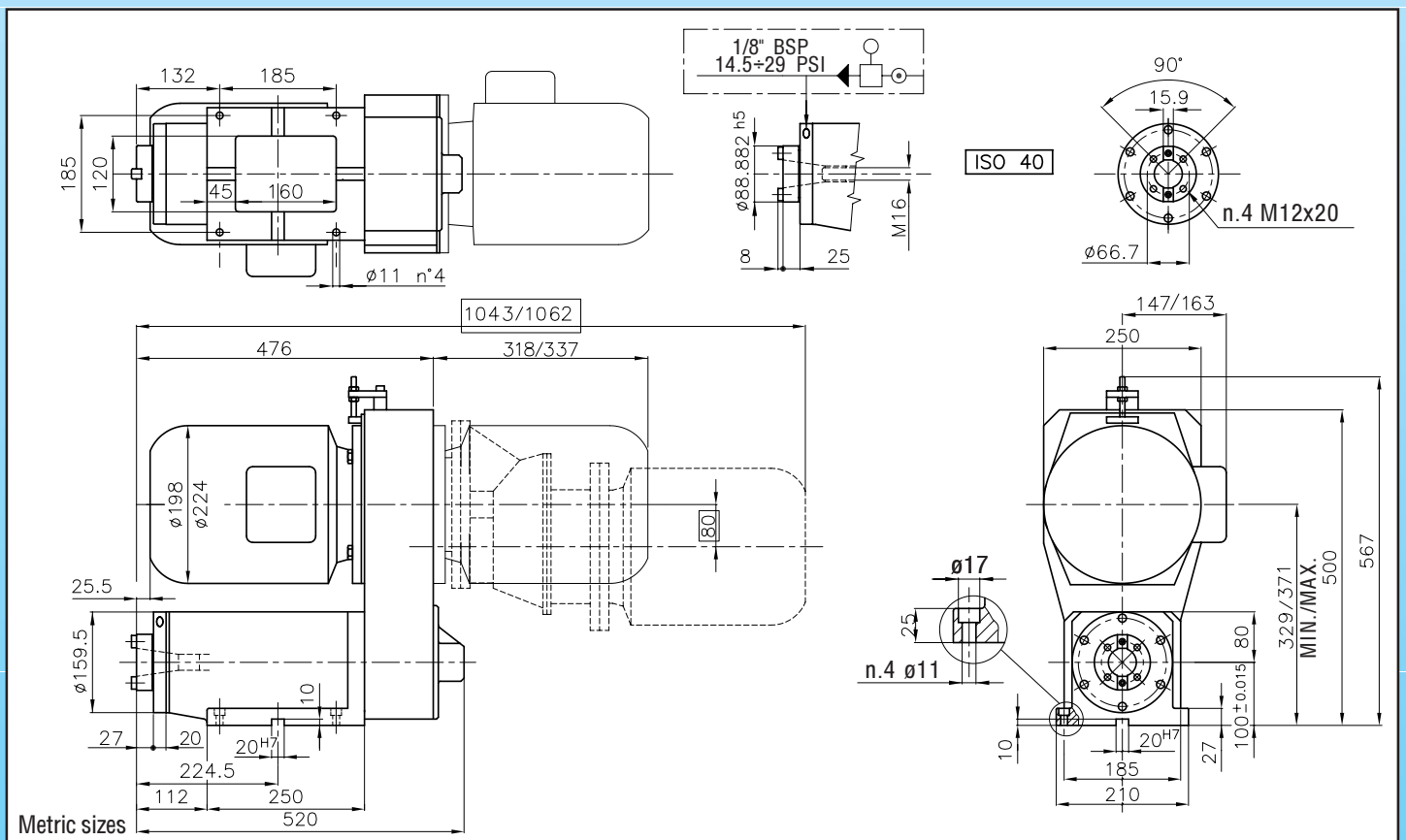
On **drilling and milling** (axial or radial) applications, model F.40.RC is to be used as it is fitted with adjustable taper roller bearings.

On **boring** applications, model F.40.CO is to be used as it is fitted with a pack of three pre-loaded precision angular contact bearings.



SPINDLE HEAD		SPEED	
TYPE	CODE	50 Hz	60 Hz
F.40.600.RC	10108125	■ 600	720
F.40.1000.RC	10108135	■ 1000	1200
F.40.1450.RC	10108145	■ 1450	1750
F.40.2000.RC	10108155	■ 2000	2400
F.40.2800.RC	10108165	● 2800	3360
F.R40.120.RC	10108108	■ 120	145
F.R40.290.RC	10108110	■ 290	350
F.R40.400.RC	10108115	■ 400	480
F.40.1000.CO	10108325	■ 1000	1200
F.40.1450.CO	10108335	■ 1450	1750
F.40.2000.CO	10108345	■ 2000	2400
F.40.2800.CO	10108355	● 2800	3360
F.40.3500.CO	10108365	● 3500	4200
F.40.4000.CO	10108370	● 4000	4800

	TECHNICAL FEATURES								
	DRILLING CAPACITY mm (inch)		MAX. AXIAL THRUST N (lbs)		MOTOR (IP 55 protection)		WEIGHT Kg (lbs)	STANDARD COLOUR RAL	MAX RUNOUT mm (inch) T.I.R.
	MILD STEEL	ALLUMINIUM BRASS	TAPER ROLLER	ANGULAR CONTACT	STANDARD FRAME 100	OPTIONAL FRAME 112			
F.40	46 (1.81")	60 (2.36")	15000 (3308)	3300 (728)	KW 3 2 P KW 2.2 4 P	KW 4 2 P KW 4 4 P	100 (220)	7035	0.01 (.0004")



ACCESSORIES

MACHINING UNIT WITHOUT MOTOR		TYPE	CODE
<p>Metric sizes</p>		F.40.RC max speed 3000 R.P.M.	10108101
		F.40.CO max speed 5000 R.P.M.	10108301

MOTOR WITH INTEGRATED INVERTER	TYPE	CODE
motor + inverter + EMI filter + servovent. <p>Metric sizes</p> Optional A - wired - ON/OFF, clockwise / - conter clockwise rotation	MII100b4 B5 4 poles 3 phase 380/440 V 50-60 Hz 3 Kw (A) nom. 7,2 (A) max. 18 IP 55	Standard motor 43053007 Optional A 28012005 Optional B 28012006

MOTOR POSITION	NOTE
<p>FRONTAL VIEW</p>	To specify with order. No added cost

COOLANT THRU SPINDLE	TYPE	CODE
<p>Metric sizes</p>	—	28010093

MOTOR POSITION	NOTE
	To specify with order. No added cost

HYDRAULIC TOOL HOLDER	TYPE	CODE
<p>Metric sizes</p>	—	28012011

FLANGE FOR MULTISPINDLE HEAD	TYPE	CODE
<p>Metric sizes</p>	—	M9910037

HYDRAULIC TOOL HOLDER WITH COOLANT	TYPE	CODE
<p>Metric sizes</p>	—	28012012

FROM ISO 40 DIN 2080 TO TR 36 DIN 55058	TYPE	CODE
<p>Metric sizes</p>	—	10961004

SPINDLE ROTATION CONTROL	NOTE
<p>Metric sizes</p>	Please consult engineering office

FROM ISO 40 DIN 2080 TO ER 32	TYPE	CODE
<p>Metric sizes</p>	A	10961005
	B	445301..
	C	44550116

Spindle head F.50 is designed to be mounted on "S" series slide units. Tool holder is ISO 50. Different spindle bearing options are available to suit machining applications.

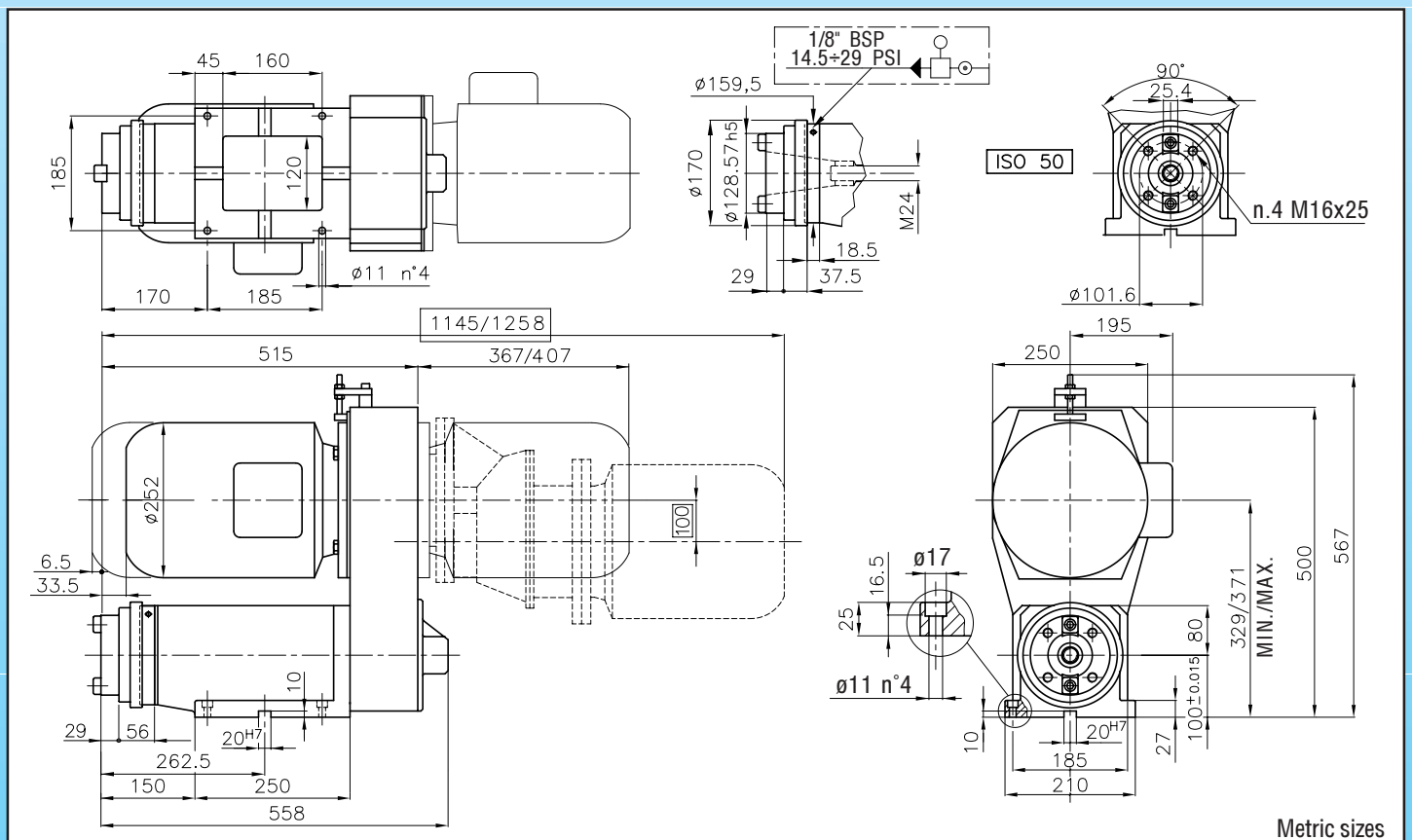
On **drilling and milling** (axial or radial) applications, model F.50.RC is to be used as it is fitted with adjustable taper roller bearings.

On **boring** applications, model F.50.CO is to be used as it is fitted with a pack of three pre-loaded precision angular contact bearing.



SPINDLE HEAD		SPEED	
TYPE	CODE	50 Hz	60 Hz
F.50.600.RC	10108715	■ 600	720
F.50.1000.RC	10108720	■ 1000	1200
F.50.1450.RC	10108725	■ 1450	1750
F.50.2000.RC	10108730	■ 2000	2400
F.50.2800.RC	10108735	● 2800	3360
F.R50.120.RC	10108700	■ 120	145
F.R50.290.RC	10108705	■ 290	350
F.R50.400.RC	10108710	■ 400	480
F.50.1000.CO	10108750	■ 1000	1200
F.50.1450.CO	10108755	■ 1450	1750
F.50.2000.CO	10108760	■ 2000	2400
F.50.2800.CO	10108765	● 2800	3360
F.50.3500.CO	10108770	● 3500	4200
F.50.4000.CO	10108775	● 4000	4800

	TECHNICAL FEATURES								
	DRILLING CAPACITY mm (inch)		MAX. AXIAL THRUST N (lbs)		MOTOR (IP 55 protection)		kg (lbs)	STANDARD COLOUR RAL	MAX RUNOUT mm (inch*) T.I.P.
	MILD STEEL	ALLUMINIUM BRASS	TAPER ROLLER	ANGULAR CONTACT	STANDARD FRAME 132	OPTIONAL FRAME 132			
F.50	50 (1.97")	64 (2.52")	20000 (4410)	8000 (1764)	● KW 5.5	■ KW 4 P	125 (276)	7035	0.01 (.0004")



Metric sizes

ACCESSORIES

MACHINING UNIT WITHOUT MOTOR		TYPE	CODE
		F.50.RC max speed 3000 R.P.M.	10108701
		F.50.CO max speed 5000 R.P.M.	10108751

Metric sizes

MOTOR WITH INTEGRATED INVERTER	TYPE	CODE
motor + inverter + EMI filter + servomotor. 	MII100b4 B5 4 poles 3 phase 380/440 V 50-60 Hz 3 Kw (A) nom. 7,2 (A) max. 18 IP 55	Standard motor 43053007 Optional A 28012005 Optional B 28012006

Metric sizes

MOTOR POSITION	NOTE
	To specify with order. No added cost

COOLANT THRU SPINDLE	TYPE	CODE
	—	28010094

Metric sizes

MOTOR POSITION	CODE
	To specify with order. No added cost

HYDRAULIC TOOL HOLDER	TYPE	CODE
	—	28012013

Metric sizes

FLANGE FOR MULTISPINDLE HEAD	TYPE	CODE
	—	M9910038

HYDRAULIC TOOL HOLDER WITH COOLANT	TYPE	CODE
	—	28012014

Metric sizes

FROM ISO 50 DIN 2080 TO TR 48 DIN 55058	TYPE	CODE
	—	10961006

Metric sizes

SPINDLE ROTATION CONTROLL	NOTE
	Please consult engineering office

Metric sizes

FROM ISO 50 DIN 2080 TO ER 32	TYPE	CODE
	A	10961007
	B	445301..
	C	44550116

Metric sizes