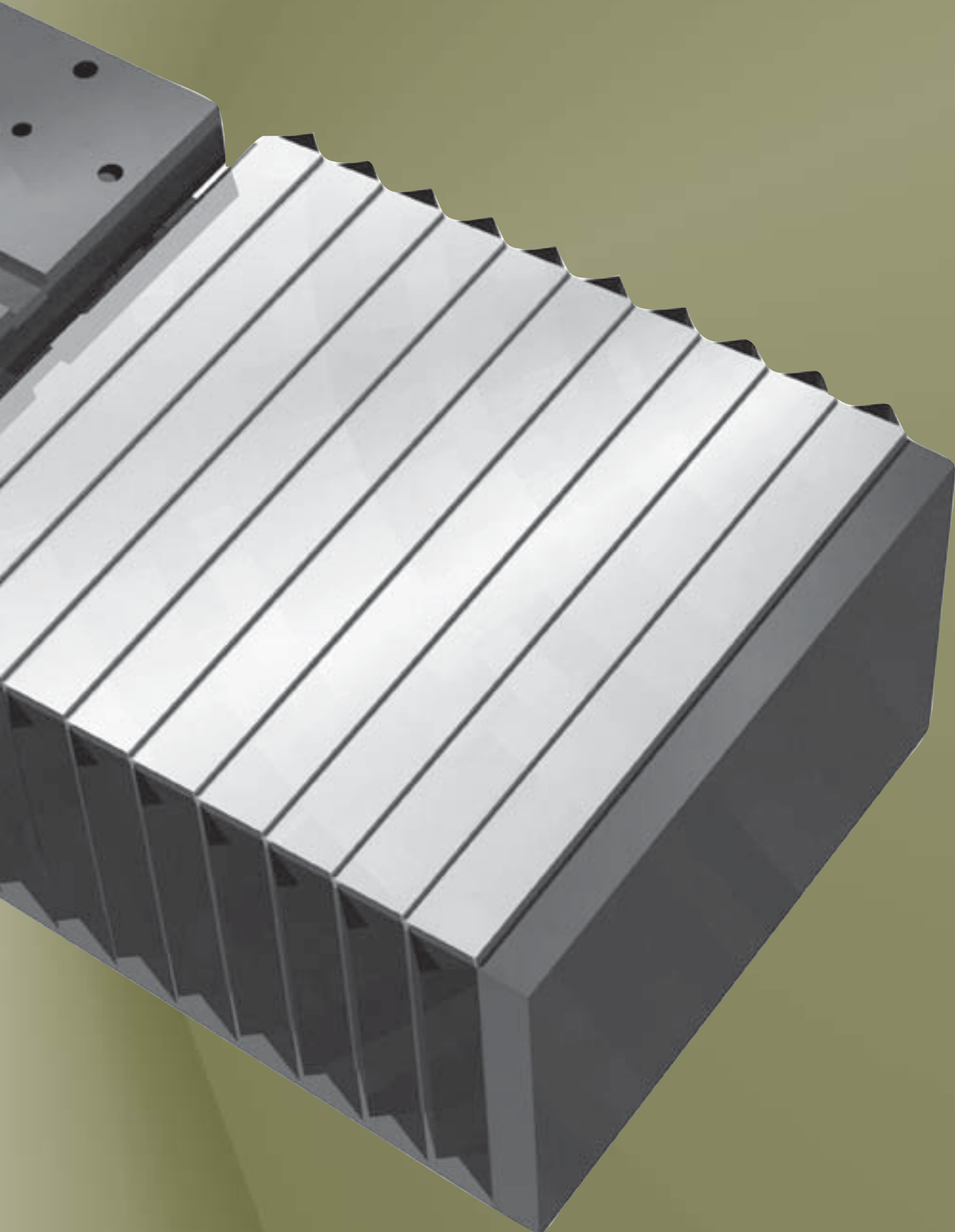


EUROMA[®]

SLIDE UNITS



Ball screw slide units S.UT.200 are designed to carry spindle heads models "F.25 (with collar) - F.32".

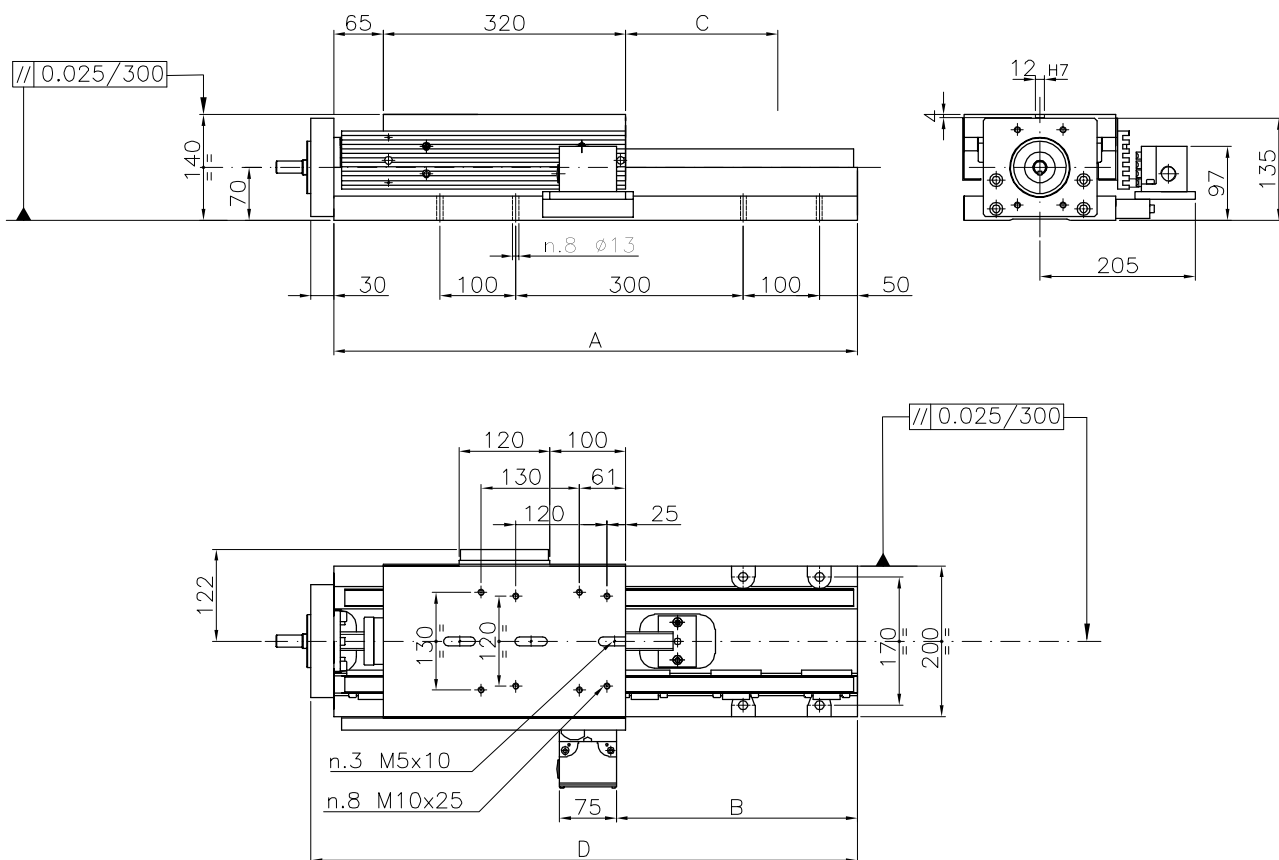
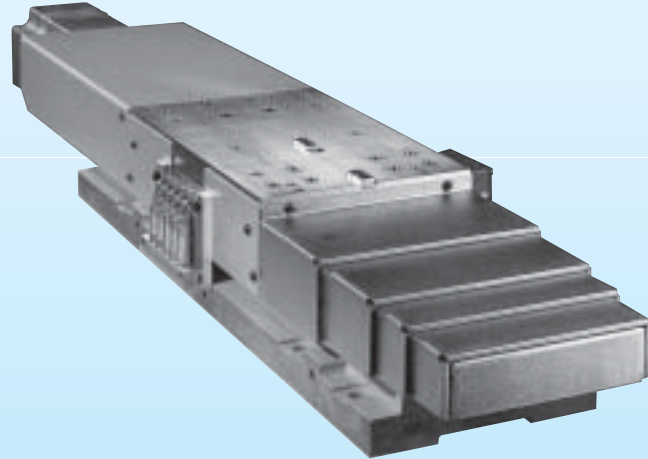
On the cast iron base rests 2 precision rails and 4 ball rows pads and screw 25 mm dia x 5 mm pitch (.98" dia x .20" pitch).

Re-circulating ball pads enable linear speeds of approximately 15 times (150 m/min- 492 FT/min) that of the one obtained on cast iron ways, with very long lubrication intervals. High performance with high rigidity (no traditional blocking system is needed and eliminates oil leakage thru the guides

Thrust is supplied by a precision rolled ball screw moving inside a no backlash pre-loaded nut assembly fitted to the carrier.

The slide comes complete with a sealed micro-switch pack and relative cams, normally fitted to the right hand side.

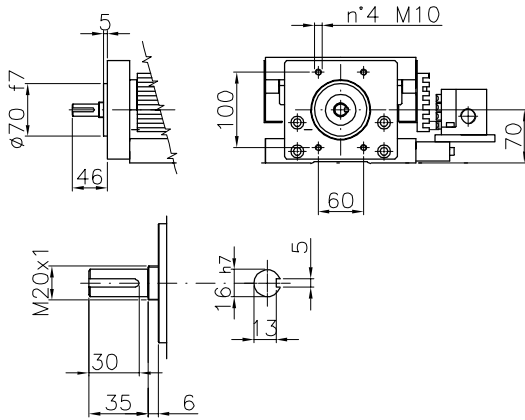
Slide units with 6 ball rows pads are supplied on request.



TYPE	A	B	C	D
S.UT.200-250	690	318	250	720
S.UT.200-320	760	388	320	790
S.UT.200-400	840	468	400	870

Metric sizes

STANDARD MOTOR MOUNTING DIMENSION

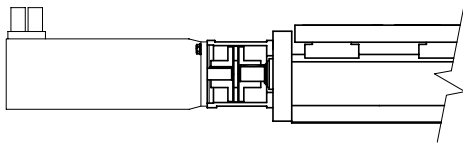


P.S. If special screw shank is request, please advise motor features

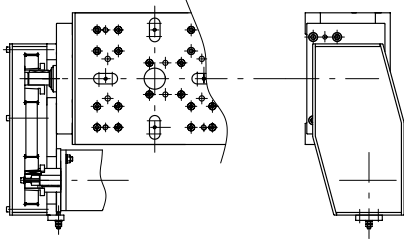
Metric sizes

DRIVE MOTOR (NOT SUPPLIED)

DIRECT DRIVE (SERVOMOTOR WITH CO-AXIAL ENCODER)



OFF-SET DRIVE (SERVOMOTOR WITH TOOTHED BELT DRIVE)



ACCESSORIES

SLIDWAY COVER	STROKE	CODE
	250 mm (9.84")	28150003
	320 mm (12.60")	28150005
	400 mm (15.75")	28150007
TELESCOPIC PROTECTION COVER	STROKE	CODE
	250 mm (9.84")	28150004
	320 mm (12.60")	28150006
	400 mm (15.75")	28150008
AUTOMATIC SYSTEM FOR GREASING PADS AND SCREW		CODE
		28150002
MICRO ON RIGHT (ONLY FOR AUTOMATIC SYSTEM FOR GREASING)		CODE
		M9910023
RE-CIRCULATING BALL PADS	TYPE	CODE
	250 mm (9.84")	M9910025
	320 mm (12.60")	M9910027
	400 mm (15.75")	M9910029
LARGER SCREW FEED	TYPE	CODE
	250 mm (9.84")	M9910030
	320 mm (12.60")	M9910031
	400 mm (15.75")	M9910039

Metric sizes

TECHNICAL FEATURES

	CODE	TOTAL STROKE mm (inch)	FUNZIONAMENTO A VITE CON RICIRCOLO DI SFERE	MAX. AXIAL THRUST ON THE SCREW N (lbs)	MAX TORQUE ON THE SCREW Nm (ft.lb)	WEIGHT KG (lbs)	STANDARD COLOUR RAL							
								LOAD CAPACITY KN (lbs)		STATIC MOMENT Nm (ft.lb)				
								C dynamic	Co static	Mx	My	Mz (Mmm)		
S.UT.200-250	10321001	250 (9.84")												
S.UT.200-320	10321002	320 (12.60")	ø25x5 (mm)	7500 (1654)	8 (5.9)	90 (198)	7035	70 (15435)	100 (22050)	2000 (1475)	3600 (2655)	3600 (2655)		
S.UT.200-400	10321003	400 (15.75")												

S.SV.201

S.SV.301

S.CV.201

S.CV.301

BALL SCREW SLIDE

Ball screw slide units S.SV - S.CV are designed to carry spindle heads models "F.25 (with collar) - F.32 - F.40".

S.SV = cast iron base with precision rails and 4 ball rows pads and screw 25 mm dia x5 mm pitch (.98" dia x .20" pitch).

S.CV = cast iron base with precision rails and 4 ball rows pads and screw 32 mm dia x5 mm pitch (1.26" dia x .20" pitch).

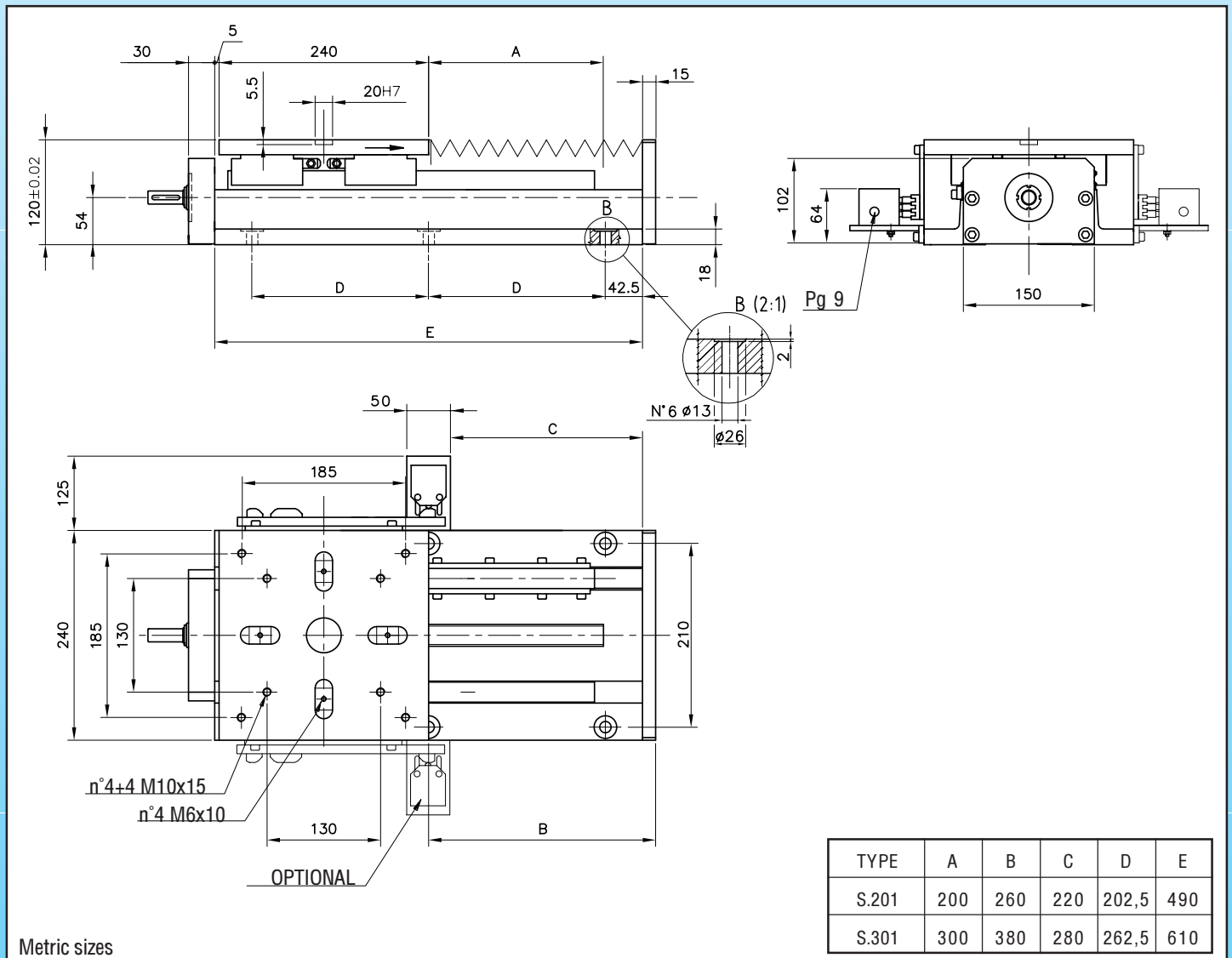
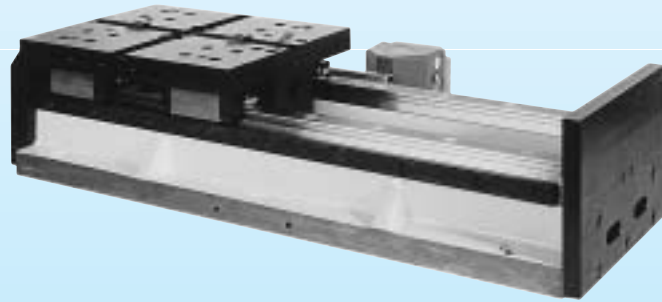
Re-circulating ball pads enable linear speeds approximately 15 times (150 m/min- 492 FT/min) that of the one obtained on cast iron ways, with very long intervals lubrication.

Thrust is supplied by a precision rolled ball screw moving inside a no backlash pre-loaded nut assembly fitted to the carrier.

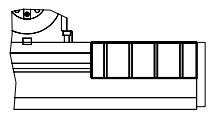
The slide comes complete with a sealed micro-switch pack and relative cams, normally fitted to the right hand side.

S.SV - S.CV slides are supplied with input spindle and motor plate according to our standard or, on request, to customer's specification.

Slide units with 6 ball rows pads are supplied on request.

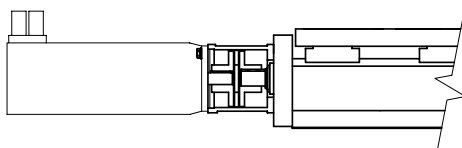


SLIDE UNITS		STROKE
TYPE	CODE	mm (inch)
S.SV.201	10320053	200 (7.87")
S.SV.301	10320063	300 (11.81")
S.CV.201	10320055	200 (7.87")
S.CV.301	10320065	300 (11.81")

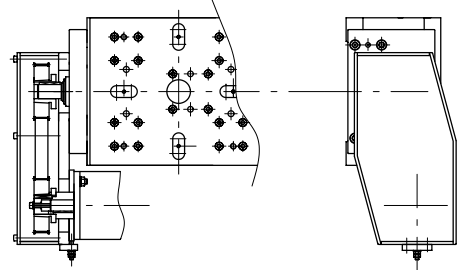
ACCESSORIES		
SLIDEWAY COVER	STROKE	CODE
	200 mm (7.87")	28050040
	300 mm (11.81")	28050042

DRIVE MOTOR (NOT SUPPLIED)

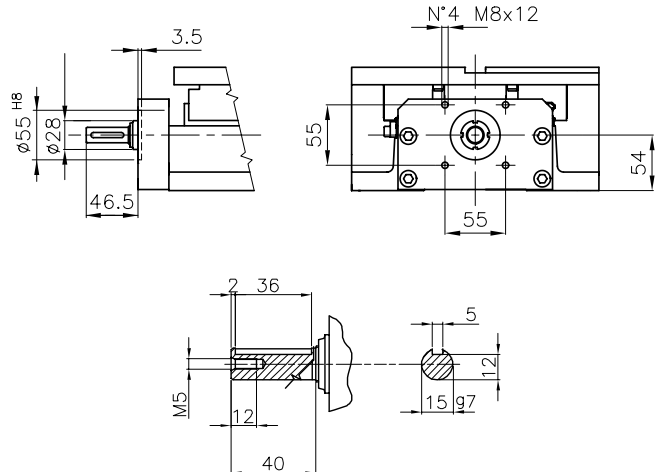
DIRECT DRIVE (SERVOMOTOR WITH CO-AXIAL ENCODER)



OFF-SET DRIVE (SERVOMOTOR WITH TOOTHED BELT DRIVE)



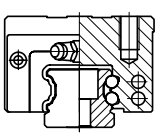
STANDARD MOTOR MOUNTING DIMENSION



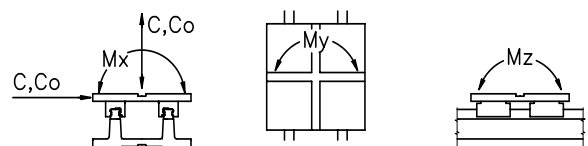
P.S. If special shank is requested, please advise features

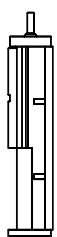
Metric sizes

GUIDE PADS ARRANGEMENT (4 BALL ROWS)



MAXIMUM STRESSES



	TECHNICAL FEATURES										
	mm (inch)	SCREW	MAX. AXIAL THRUST ON THE SCREW N (lbs)	MAX. TORQUE ON THE SCREW Nm (ft.lb)	WEIGHT KG (lbs)	STANDARD COLOUR RAL	LOAD CAPACITY		STATIC MOMENT		
							C dynamic	Co static	Mx Nm (ft.lb)	My Nm (ft.lb)	Mz Nm (ft.lb)
S.SV.201	25 dia x 5 (.98" dia x .20")	200 (7.87")	9700 (2139)	8 (5.9)	43 (95)	7035	60 (13230)	80 (17640)	1800 (1327)	1800 (1327)	1800 (1327)
S.SV.301		300 (11.81")			50 (110)						
S.CV.201	32 dia x 5 (1.26" dia x .20")	200 (7.87")	12500 (2756)	11 (8.11)	43 (95)	7035	70 (15435)	100 (22050)	2200 (1622)	2300 (1696)	2300 (1696)
S.CV.301		300 (11.81")			50 (110)						

S.TV.201

S.TV.301

S.TV.401

S.TV.601

BALL SCREW SLIDE

Ball screw slide units S.TV are designed to carry spindle heads models "F.40 - F.50".

S.TV = cast iron base with precision rails and 4 ball rows pads

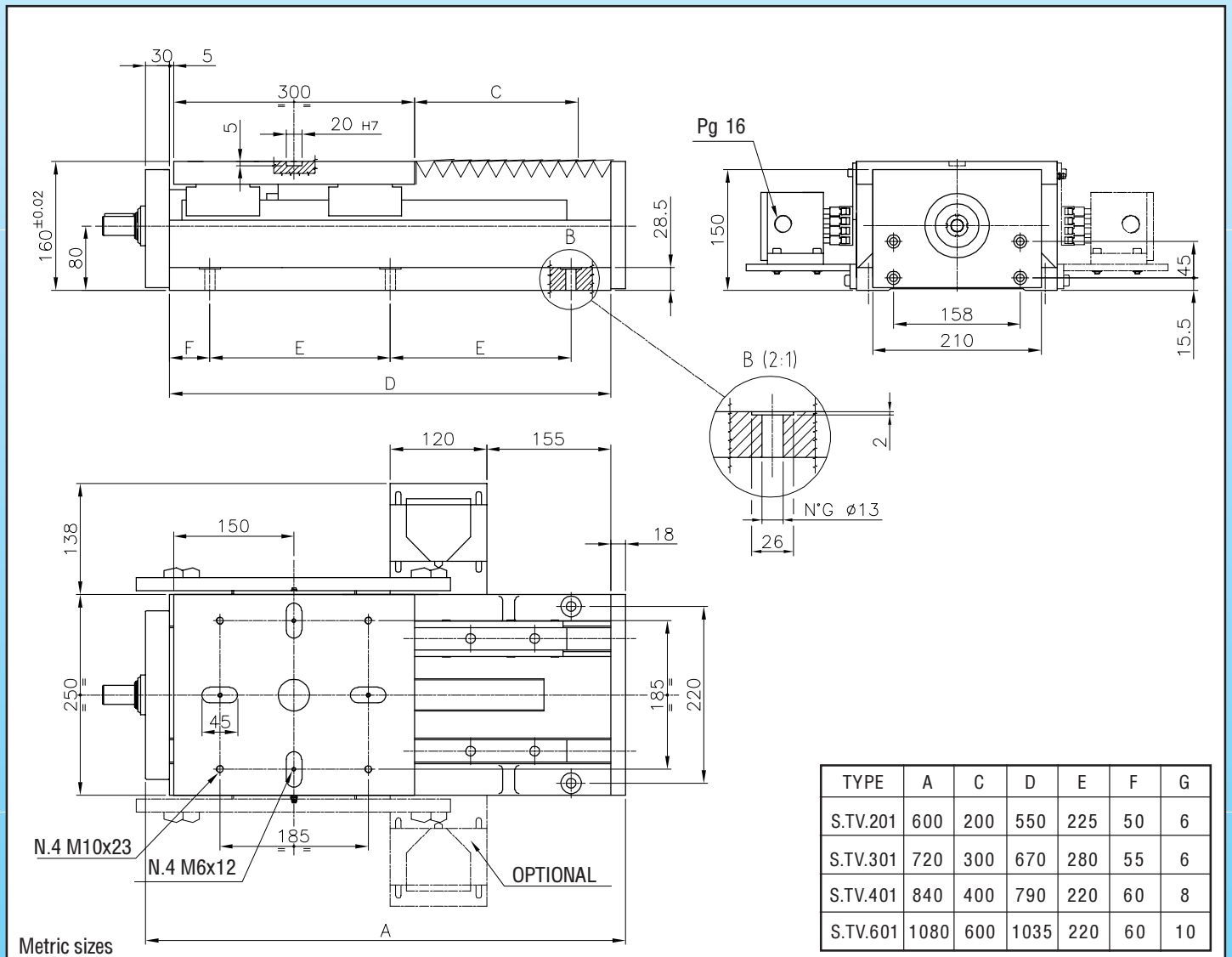
Re-circulating ball pads enable linear speeds approximately 15 times (150 m/min -492 FT/min) that of the one obtained on cast iron ways, with very long intervals lubrication.

Thrust is supplied by a precision rolled ball screw 40 mm dia x5 mm pitch (1.57" dia x .20" pitch) moving inside a no backlash pre-loaded nut assembly fitted to the carrier.

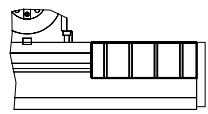
The slide comes complete with a sealed micro-switch pack and relative cams, normally fitted to the right hand side.

S.TV slides are supplied, with input spindle and motor plate according to our standard (see page 43) or, on request, to customer's specification.

Slide units with 6 ball rows pads are supplied on request.

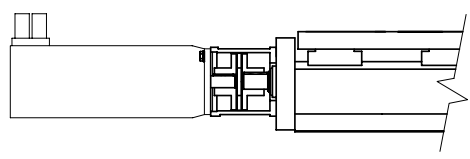


SLIDE UNITS		STROKE
TYPE	CODE	mm (inch)
S.TV.201	10320070	200 (7.87")
S.TV.301	10320080	300 (11.81")
S.TV.401	10320090	400 (15.75")
S.TV.601	10320131	600 (23.62")

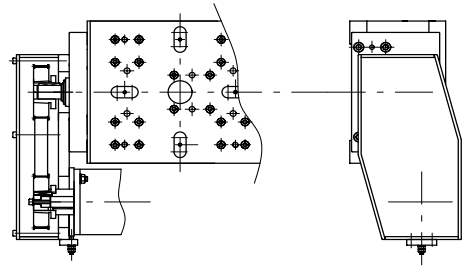
ACCESSORIES		
SLIDEWAY COVER	STROKE	CODE
	200 mm (7.87")	28055044
	300 mm (11.81")	28050046
	400 mm (15.75")	28050048
	600 mm (23.62")	28050054

DRIVE MOTOR (NOT SUPPLIED)

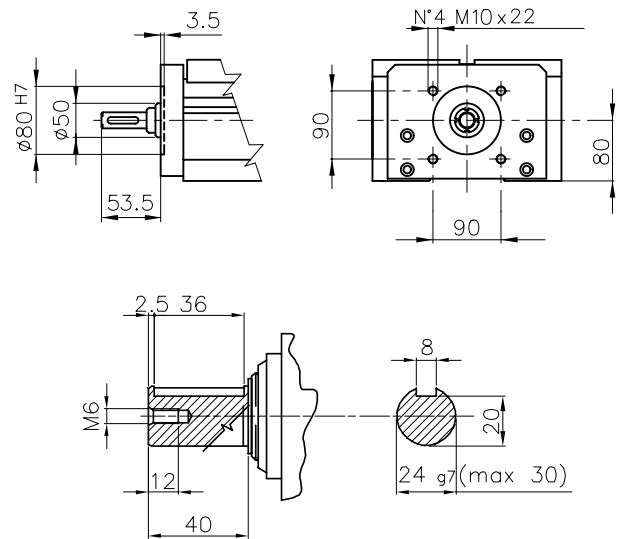
DIRECT DRIVE (SERVOMOTOR WITH CO-AXIAL ENCODER)



OFF-SET DRIVE (SERVOMOTOR WITH TOOTHED BELT DRIVE)



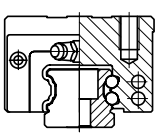
STANDARD MOTOR MOUNTING DIMENSION



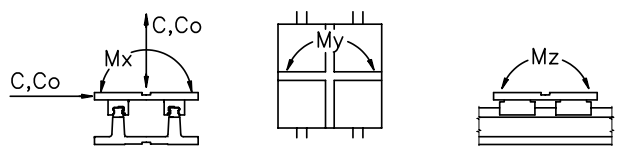
P.S. If special shank is requested, please advise features

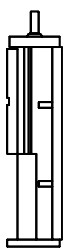
Metric sizes

GUIDE PADS ARRANGEMENT (4 BALL ROWS)



MAXIMUM STRESSES



	TECHNICAL FEATURES										
	mm (inch)	mm (inch.)	N (lbs)	Nm (ft.lb)	KG (lbs)	STANDARD COLOUR RAL	LOAD CAPACITY		STATIC MOMENT		
							KN (lbs)		Mx	My	Mz
SCREW	TOTAL STROKE	MAX. AXIAL THRUST ON THE SCREW	MAX. TORQUE ON THE SCREW	WEIGHT		C dynamic	Co static	Nm (ft.lb)	Nm (ft.lb)	Nm (ft.lb)	
S.TV.201	200 (7.87")				92 (203)	7035	110 (24255)	220 (48510)	3800 (2802)	4400 (3245)	4700 (3466)
S.TV.301	300 (11.81")	21440 (4728)	18.5 (13.6)	108 (238)							
S.TV.401	400 (15.75")			124 (271)							
S.TV.601	600 (23.62")			156 (344)							

The hydraulic slide units S.CI. are designed to carry spindle heads model "F.25 with collar - F.32 - F.40".

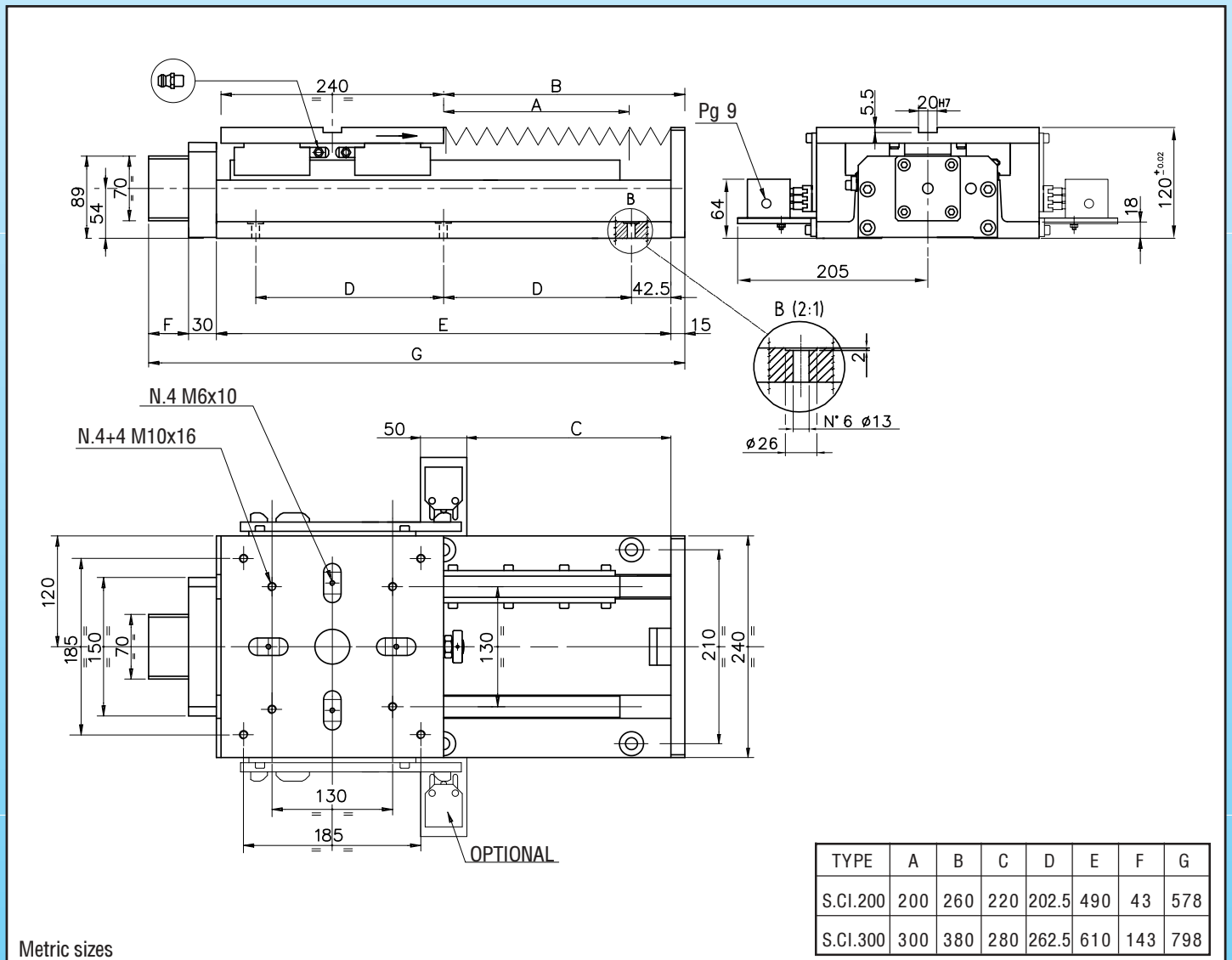
S.CI = cast iron base with precision rails and 4 ball rows pads

Re-circulating ball pads enable linear speeds of approximately 15 times (150 m/min -492 FT/min) that of the one obtained on cast iron ways, with very long intervals lubrication.

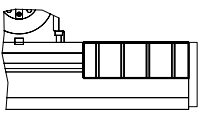
Thrust is supplied by a 50 mm (1.97") bore hydraulic cylinder fitted to the carrier.

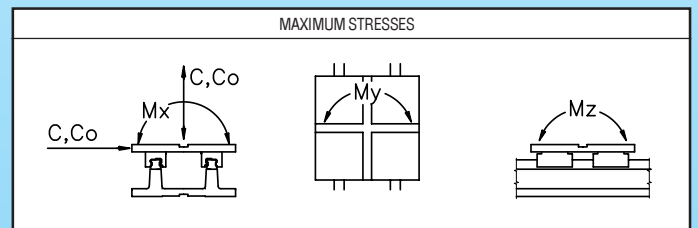
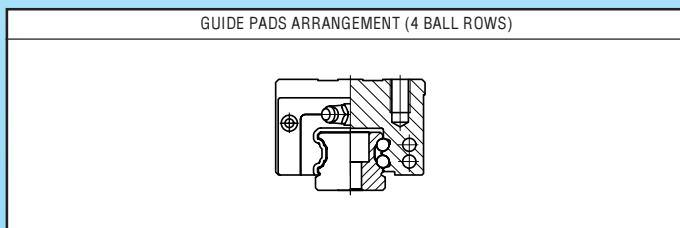
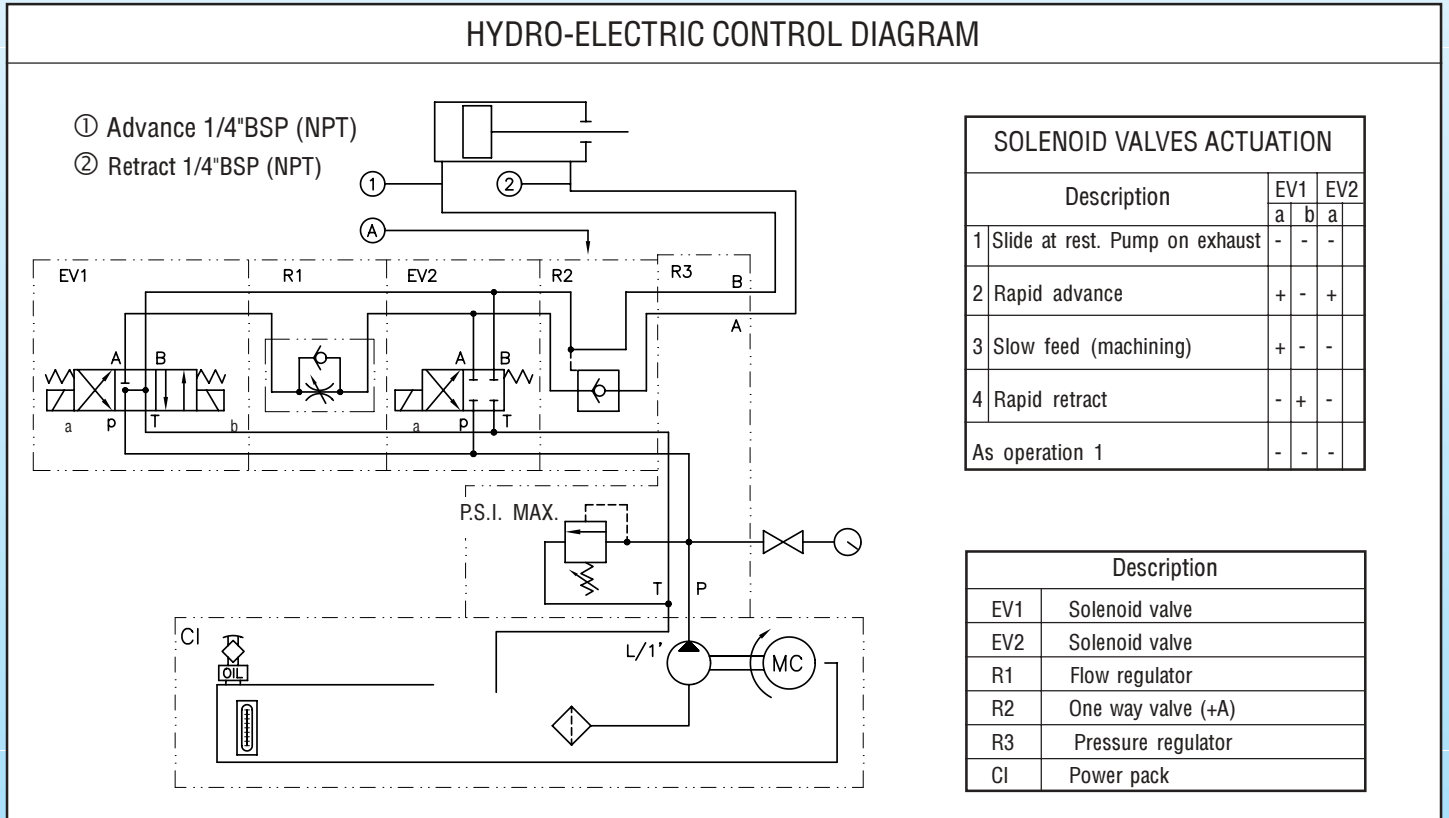
Reccomended oil pressure is 40 bar (580 psi). The slide comes complete with a sealed micro-switch pack and relative cams normally fitted to the right hand side.

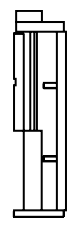
Stroke is set by an adjustable mechanical stop.



SLIDE UNITS		STROKE
TYPE	CODE	mm (inch)
S.CI.200	10315035	200 (7.87")
S.CI.300	10315040	300 (11.81")

ACCESSORIES		
SLIDEWAY COVER	STROKE	CODE
	200 mm (8.87")	28050040
	300 mm (11.81")	28050042



	TECHNICAL FEATURES											
	TYPE OF THRUST	TOTAL STROKE mm (inch.)	THRUST N (lbs) 40 bar (580 P.S.I.)	CYLINDER SECT AREA cm ² (inch ²)		WEIGHT KG (lbs)	STANDARD COLOUR RAL	LOAD CAPACITY		STATIC MOMENT		
				Advance	Retract			KN (lbs)		Mx Nm (ft.lb)	My Nm (ft.lb)	Mz Nm (ft.lb)
	hydr.	200 (7.87")	7800 (1720)	19.6 (3.04")	15.8 (2.45")	42 (92.5)	7035	C dynamic	Co static	2200 (1622)	2300 (1696)	2300 (1696)
S.CI.200		60 (13245)						100 (22050)				
S.CI.300		300 (11.81")				48 (105)						

S.TI.200

S.TI.300

S.TI.400

The **hydraulic** slides S.TI. are designed to carry spindle heads model "F.40 - F.50".

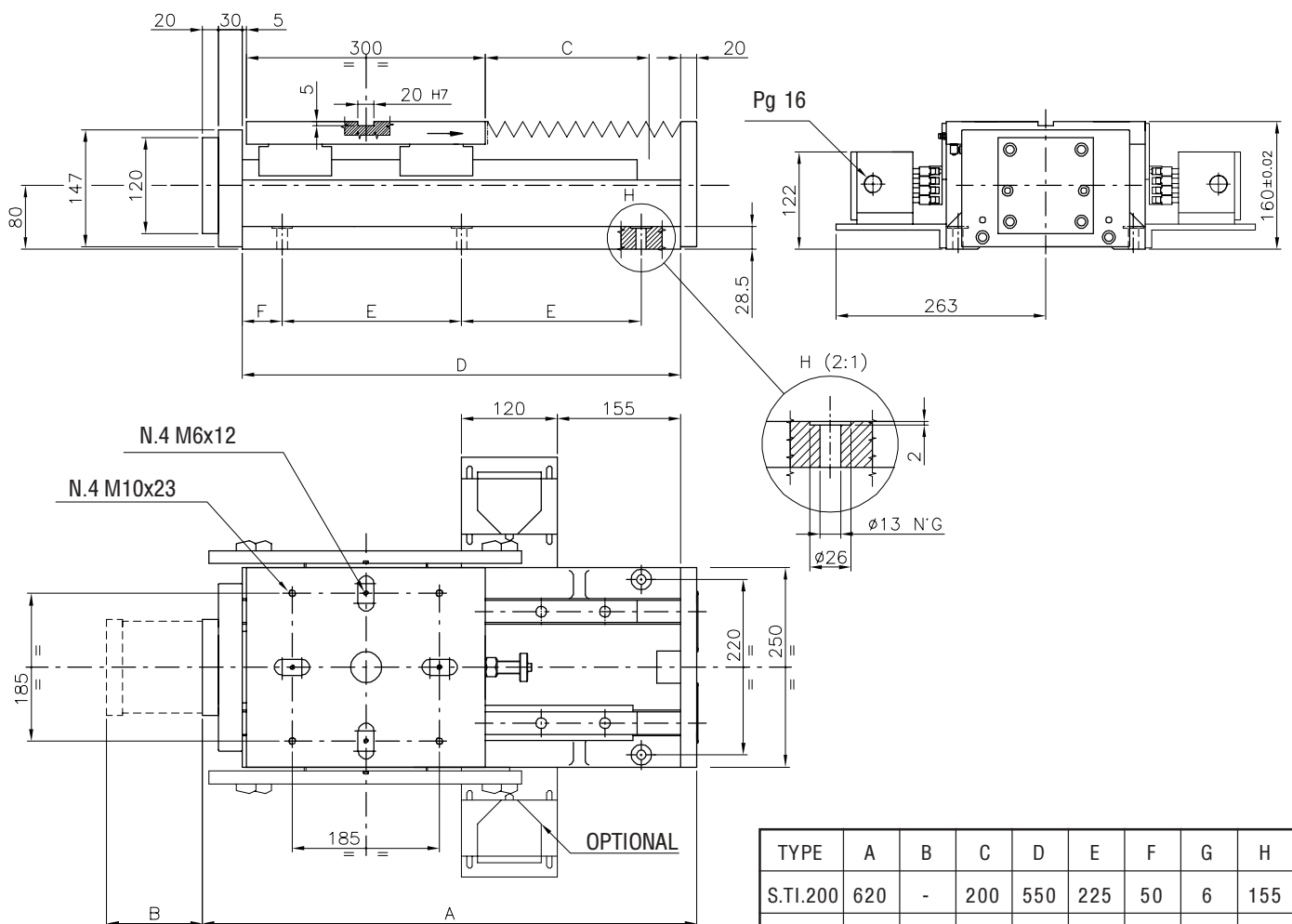
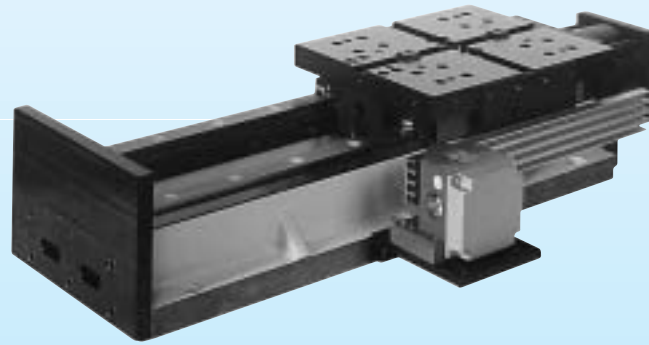
S.TI = cast iron base with precision rails and 4 ball rows pads

Re-circulating ball pads enable linear speeds approximately 15 times (150 m/min -492 FT/min) that of the one obtained on cast iron ways, with very long intervals lubrication.

Thrust is supplied by a 63 mm (2.48") bore hydraulic cylinder fitted to the carrier.

Recommended oil pressure is 50 bar (725 psi). The slide comes complete with a sealed 4 micro-switch pack and relative cams normally fitted to the right hand side.

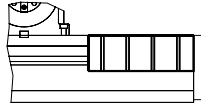
Stroke is set by an adjustable mechanical stop. Slide units with 6 ball rows pads are supplied on request.

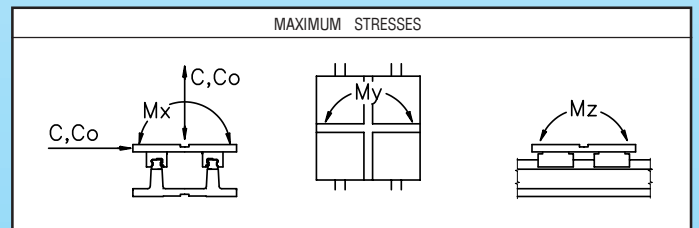
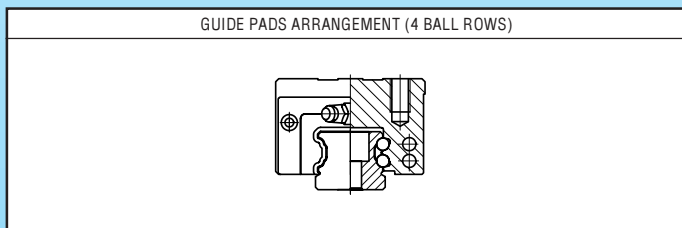
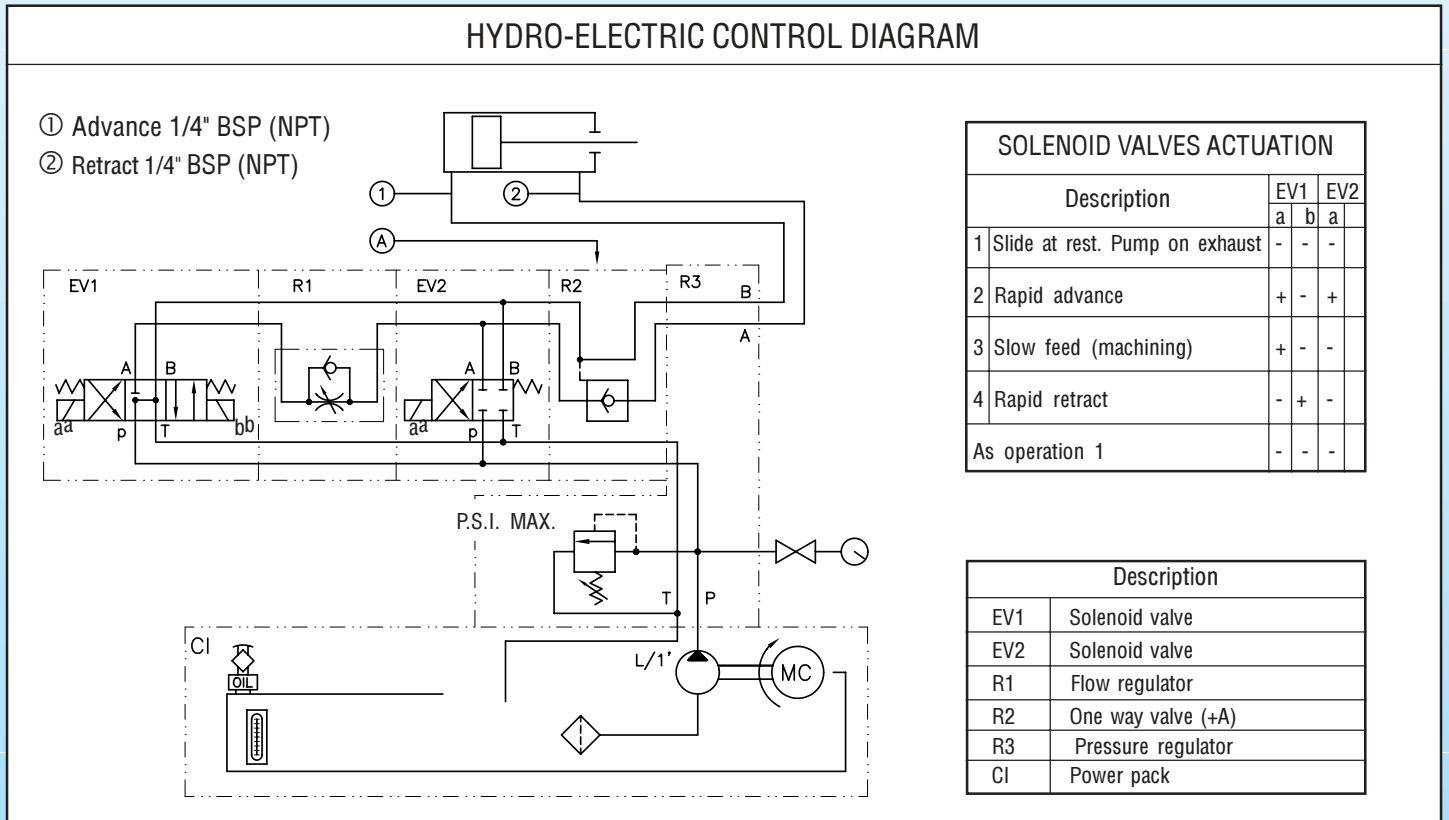



TYPE	A	B	C	D	E	F	G	H
S.TI.200	620	-	200	550	225	50	6	155
S.TI.300	740	120	300	670	280	55	6	275
S.TI.400	860	220	400	790	220	60	8	395

Metric sizes

SLIDE UNITS		STROKE
TYPE	CODE	mm (inch)
S.TI.200	10315070	200 (7.87")
S.TI.300	10315080	300 (11.81")
S.TI.400	10315090	400 (15.75")

ACCESSORIES		
SLIDEWAY COVER	STROKE	CODE
	200 mm (7.87")	28050044
	300 mm (11.81")	28050046
	400 mm (15.75")	28050048



	TECHNICAL FEATURES											
	TYPE OF THRUST	TOTAL STROKE mm (inch)	THRUST N (lbs) 40 bar (580 P.S.I.)	CYLINDER SECT AREA cm ² (inch ²)		WEIGHT KG (lbs)	STANDARD COLOUR RAL	LOAD CAPACITY		STATIC MOMENT		
				Advance	Retract			KN (lbs)		Mx Nm (ft.lb)	My Nm (ft.lb)	Mz Nm (ft.lb)
								C dynamic	Co static			
S.TI.200	200 (7.87")	15500 (3418)	31.17 (4.83")	21.13 (3.28")	92 (202.5)	7035	110 (24255)	220 (48510)	3800 (2802)	4400 (3245)	4700 (3466)	
S.TI.300	300 (11.81")											
S.TI.400	400 (15.75")											

The **pneumatic** slide unit S.CPK.200 are designed to carry spindle heads model "F.25 with collar - F.32".

It features a cast iron base fitted with precision linear slideways and **4** re-circulating ball pads, as part of the slide carrier.

Re-circulating ball pads enable linear speeds approximately 15 times (150 m/min -492 FT/min) that of the one obtained on cast iron ways, with very long intervals lubrication.

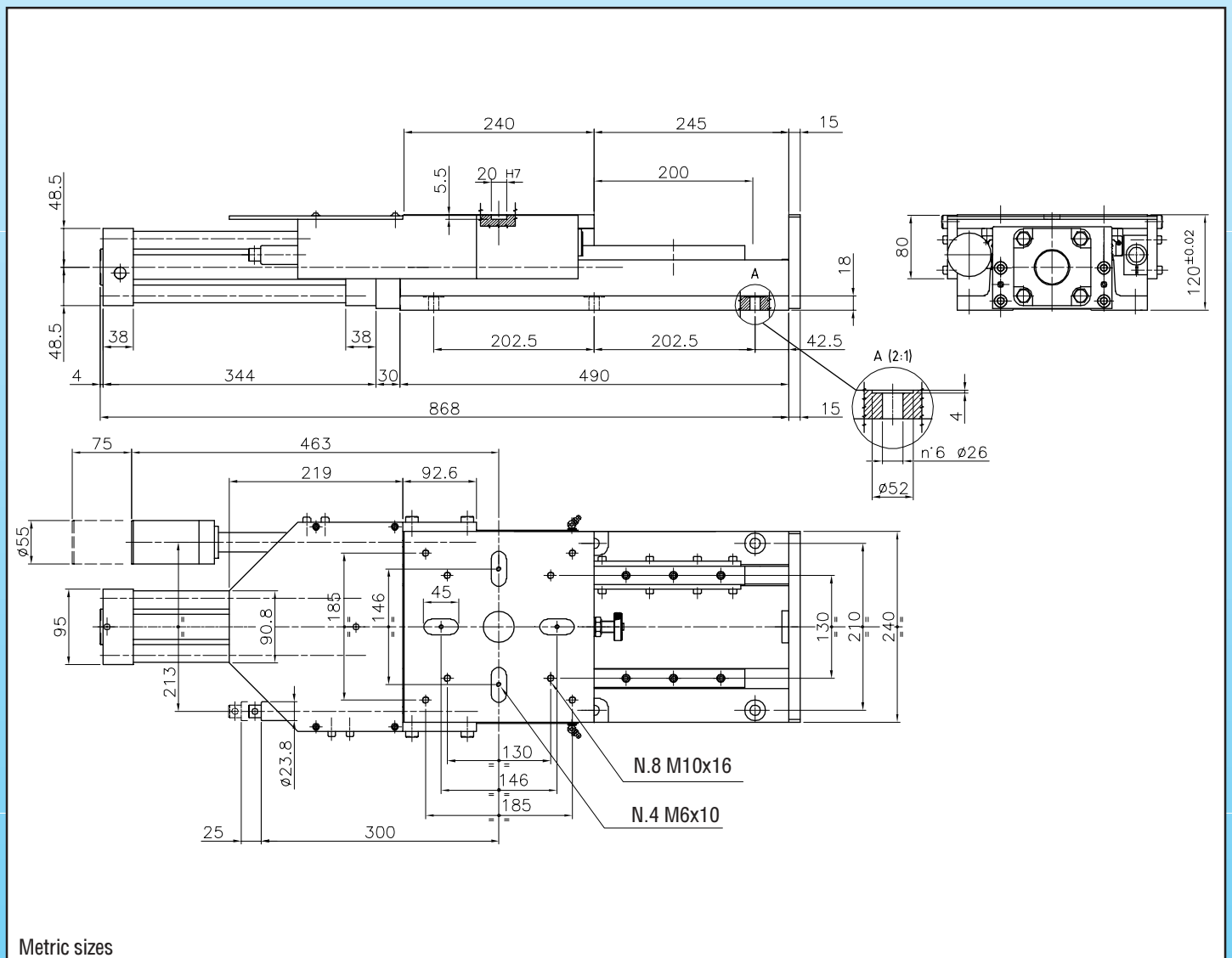
Thrust is supplied by a pneumatic cylinder with magnetic piston.

Model S.CPK.200 is fitted with a 100 mm stroke hydrocheck unit (K) to control up to 100 mm working stroke.

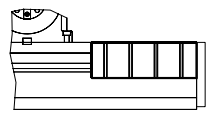
Model S.CPKK.200 includes an additional hydrocheck unit (kk) to control spotfacing chamfering operations at the end of the drilling stroke.

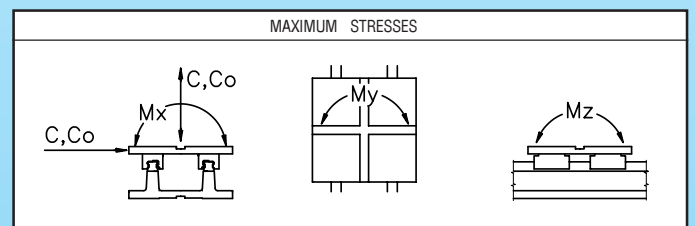
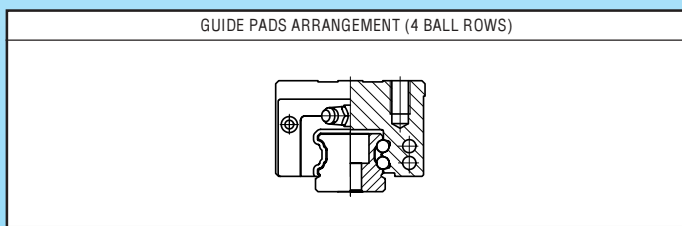
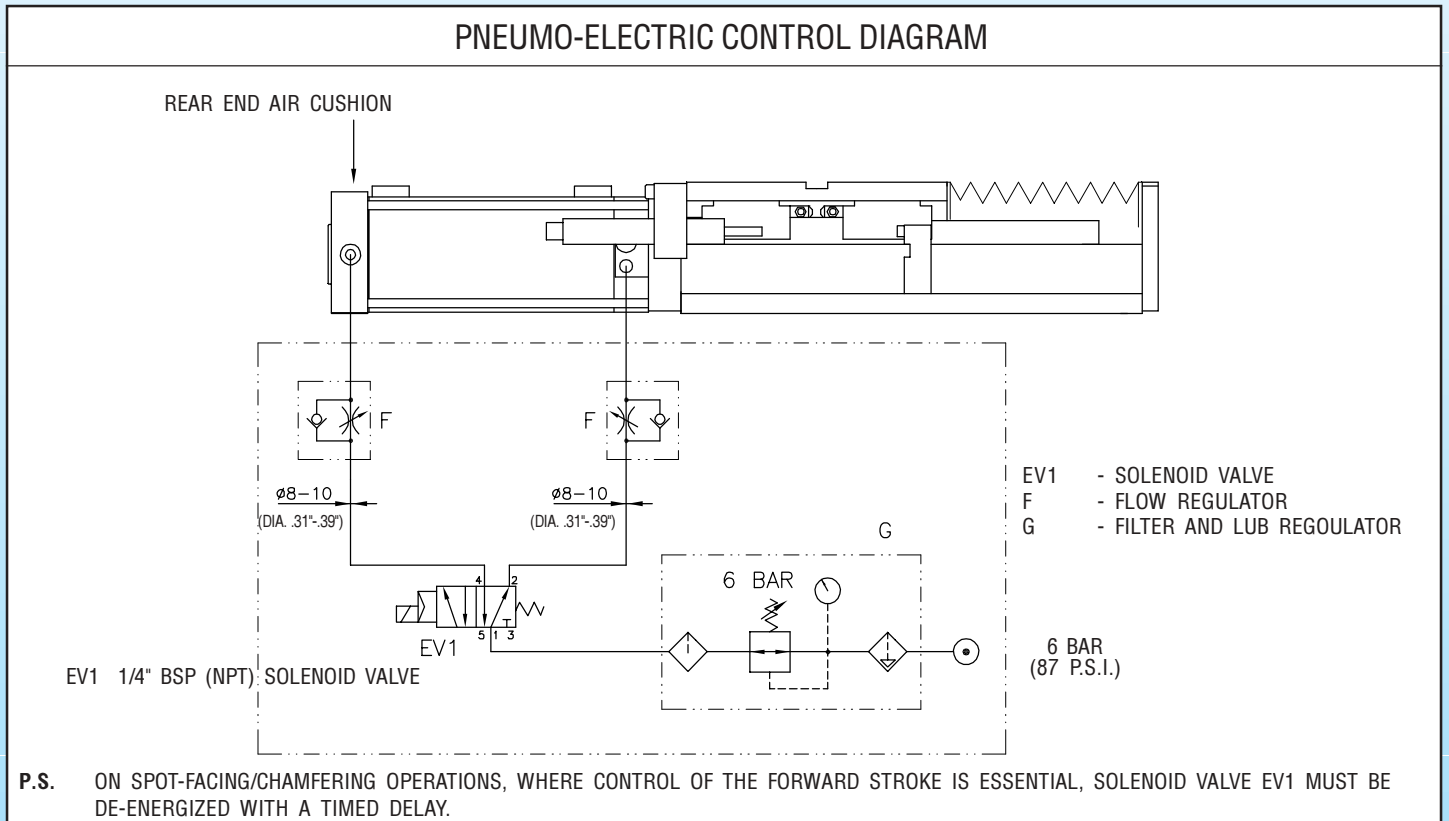
Stroke end switching is given by adjustable magnetic sensors fitted to the air cylinder.

The unit features an adjustable front end mechanical stop.



SLIDE UNITS		STROKE
TYPE	CODE	mm (inch)
S.CPK.200	10305052	200 (7.87")
S.CPKK.200	10305057	200 (7.87")

ACCESSORIES		
SLIDEWAY COVER	STROKE	CODE
	200 mm (7.87")	28050040

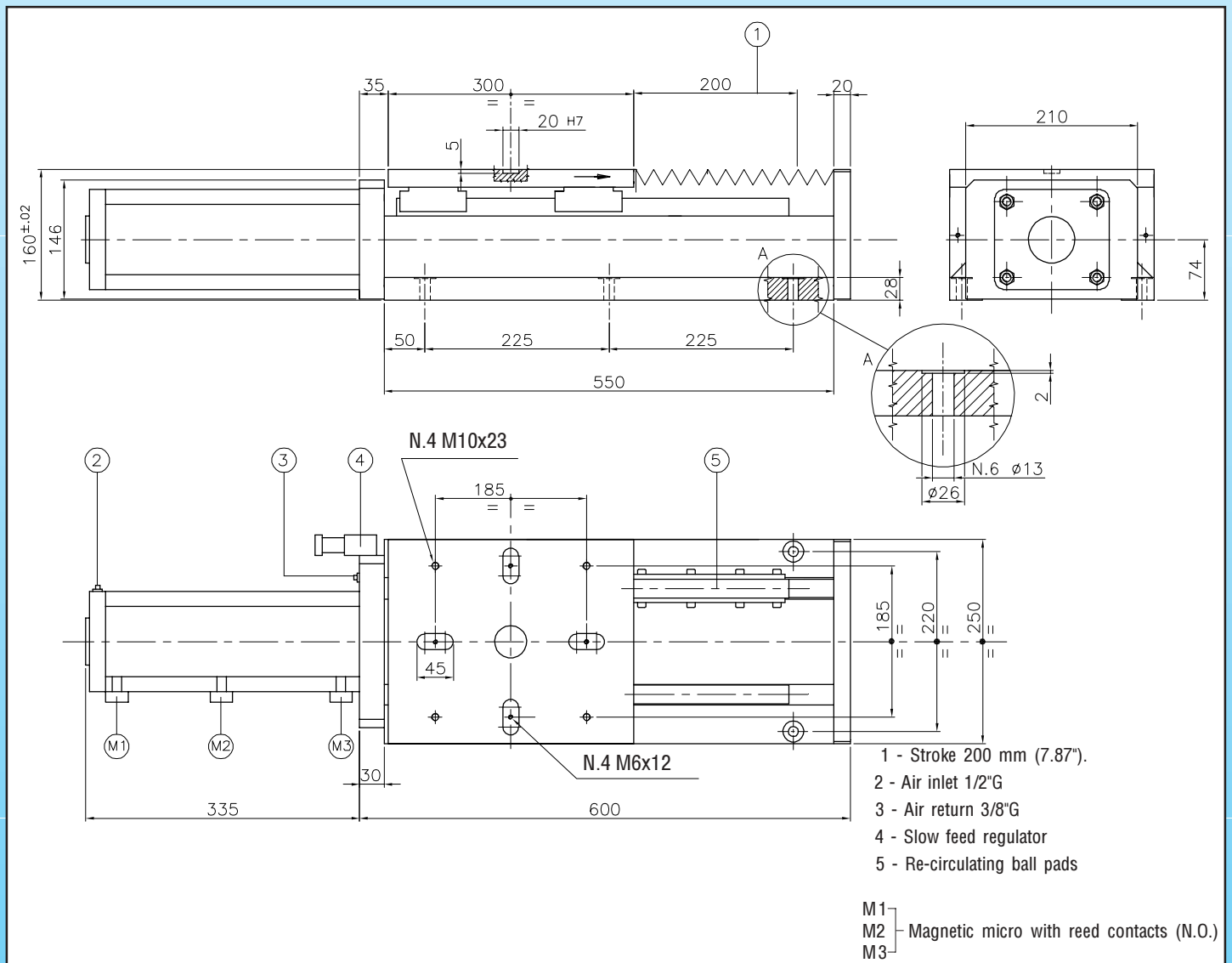
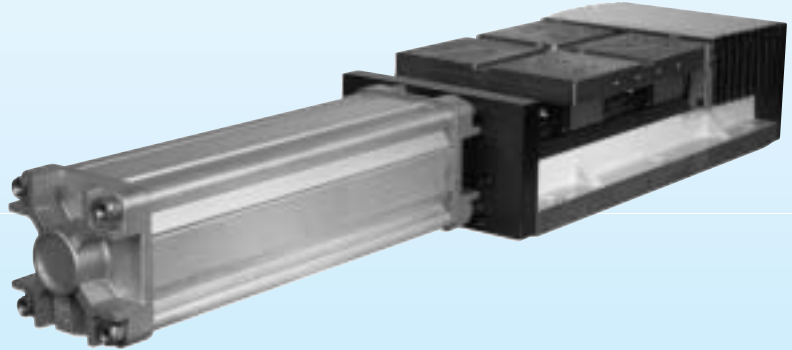


	TECHNICAL FEATURES											
	TYPE OF THRUST	TOTAL STROKE mm (inch.)	THRUST N (lbs) 6 bar (87 P.S.I.)	CYLINDER SECT AREA cm ² (inch ²)		WEIGHT KG (lbs)	STANDARD COLOUR RAL	LOAD CAPACITY		STATIC MOMENT		
				Advance	Retract			C dynamic	Co static	Mx Nm (ft.lb)	My Nm (ft.lb)	Mz Nm (ft.lb)
S.CPK.200	pneum.	200 (7.87")	3000 (662)	50,2 (7.78")	45,3 (7.02")	47 (104)	7035	60 (13230)	100 (22050)	2200 (1622)	2300 (1696)	2300 (1696)
S.CPKK.200												

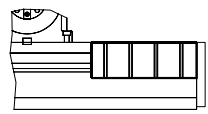
The pneumatic slide S.PK.200 is designed to carry spindle heads model "F.40 - F.50". It features a cast iron base fitted with precision linear slideways and 4 re-circulating ball pads, as part of the slide carrier. Re-circulating ball pads enable linear speeds approximately 15 times (150 m/min -492 FT/min) that of the one obtained with a cast iron slide assembly with grease lubrication every 1000 working hours.

The thrust is supplied by an air cylinder with magnetic piston and built-in hydrocheck unit, for rapid - slow feed.

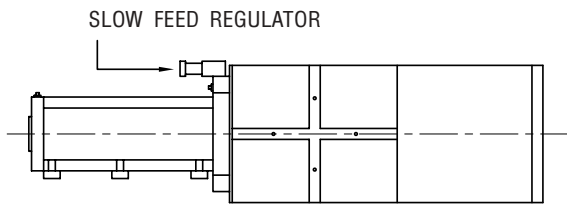
Adjustable magnetic sensors fitted to the cylinder provide stroke end switching. The slide features an adjustable front end mechanical stop.



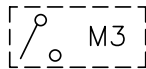
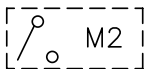
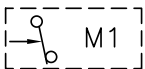
SLIDE UNITS		STROKE
TYPE	CODE	mm (inch)
S.PK.200	103 05021	200 (7.87")

ACCESSORIES		
SLIDEWAY COVER	STROKE	CODE
	200 mm (7.87")	28050044

EXAMPLE OF ELECTRO-PNEUMATIC CONTROL CIRCUIT



REED CONTACT MAGNETIC SWITCHES (N/O)

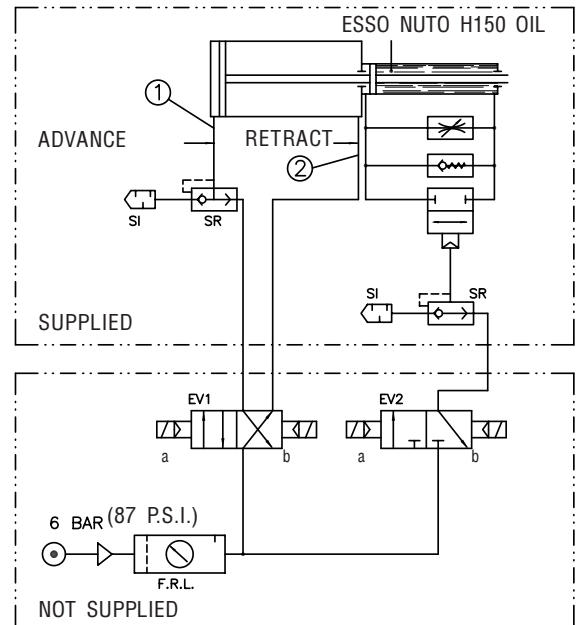


REAR END SWITCH RAPID SLOW SWITCH FRONT END SWITCH

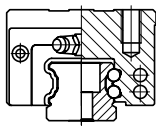
Description	
EV1	Solenoid valve 4/2-1/4" BSP/NPT
EV2	Solenoid valve 3/2-1/8" BSP/NPT
SI	Silencer
SR	Quick exhaust valve
FRL	F.R.L. Unit

Description	EV1		EV2	
	a	b	a	b
1 Unit at rest	-	-	-	-
2 Rapid advance	+	-	+	-
3 Slow feed (machining)	+	-	-	+
4 Rapid retract	-	+	-	+

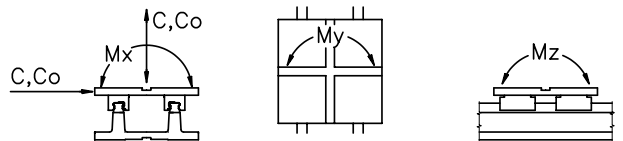
① ADVANCE 1/2" BSP (NPT) ② RETRACT 3/8" BSP (NPT)




GUIDE PADS ARRANGEMENT (4 BALL ROWS)



MAXIMUM STRESSES



TECHNICAL FEATURES

	TYPE OF THRUST	TOTAL STROKE mm (inch.)	THRUST N (lbs) 6 bar (87 P.S.I.)	CYLINDER SECT AREA cm ² (inch ²)		WEIGHT KG (lbs)	STANDARD COLOUR RAL	LOAD CAPACITY		STATIC MOMENT		
				Advance	Retract			KN (lbs)		Mx Nm (ft.lb)	My Nm (ft.lb)	Mz Nm (ft.lb)
								C dynamic	Co static			
S.PK.200	pneum.	200 (7.87")	7200 (1588)	122.7 (19.02")	114.6 (17.76")	100 (221)	7035	90 (19845)	118 (26019)	2800 (2065)	3400 (2507)	3400 (2507)

The pneumatic slide units S.SP features a cast iron base fitted with precision linear slideways and re-circulating ball pads, as part of the slide carrier.

Re-circulating ball pads enable linear speeds approximately 15 times (150 m/1' - 492 ft/min) that of the one obtained with prismatic slideways with grease lubrication every 1000 working hours.

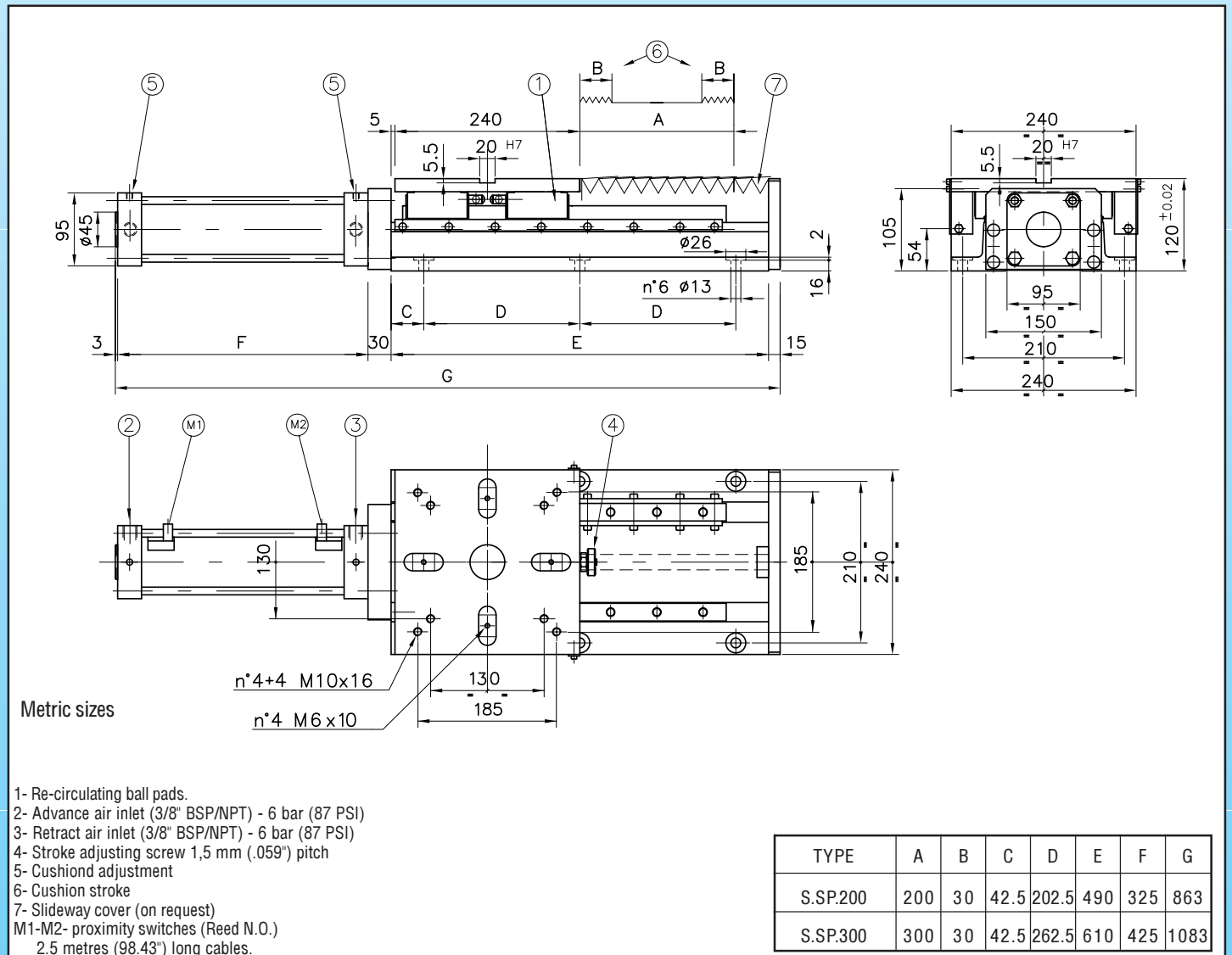
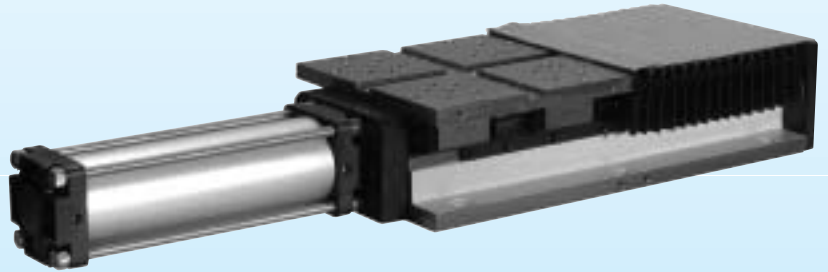
Thrust is supplied by a pneumatic cylinder with end cushions.

The recommended operating pressure is 6 bar (87 P.S.I.).

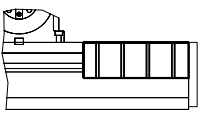
They can be installed in any position (horizontal, vertical, at an angle.)

Stroke is set by a mechanical stop.

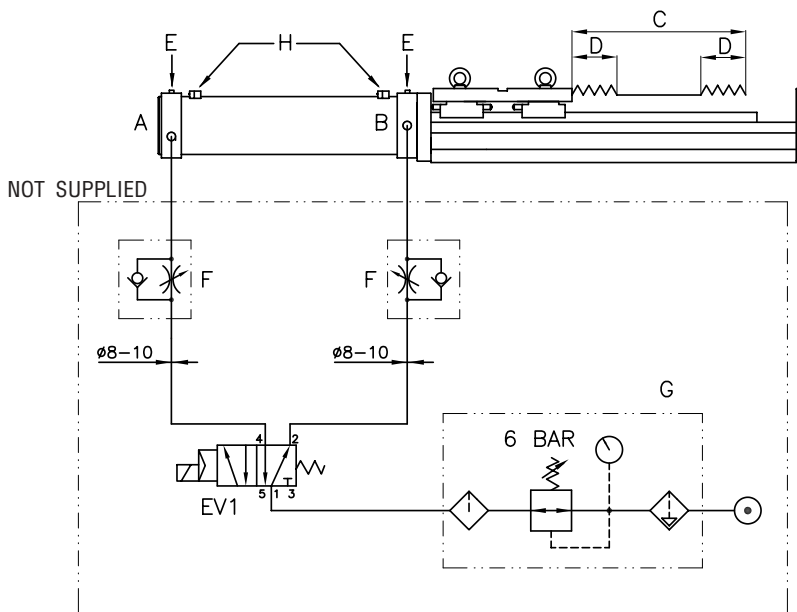
Slideway cover can be supplied on request.



SLIDE UNITS		STROKE
TYPE	CODE	mm (inch)
S.SP.200	10310067	200 (7.87")
S.SP.300	10310072	300 (11.81")

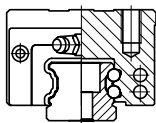
ACCESSORIES		
SLIDEWAY COVER	STROKE	CODE
	200 mm (7.87")	28050040
	300 mm (11.81")	28050042

PNEUMATIC-ELECTRIC CONTROL DIAGRAM

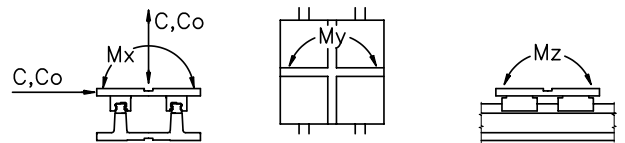


- A = forward 3/8" BSP/NPT
- B = return 3/8" BSP/NPT
- C = stroke
- D = 30 mm (1.18") cushion
- E = cushion setting
- F = flow regulator 1/4" BSP/NPT
- G = filter/regulator 3/8" BSP/NPT
- H = magnetic proximity switch
- EV1 = solenoid valve 1/4" BSP/NPT


GUIDE PADS ARRANGEMENT (4 BALL ROWS)



MAXIMUM STRESSES



TECHNICAL FEATURES

	TYPE OF THRUST	TOTAL STROKE mm (inch.)	THRUST N (lbs) 6 BAR (87 P.S.I.)	CYLINDER SECT AREA cm ² (inch ²)		WEIGHT KG (lbs)	STANDARD COLOUR RAL	LOAD CAPACITY		STATIC MOMENT		
				Advance	Retract			KN (lbs)		Mx Nm (ft.lb)	My Nm (ft.lb)	Mz Nm (ft.lb)
								C dynamic	Co static			
S.SP.200	pneum.	200 (7.87")	3000 (662)	50,26 (7.8")	46,46 (7.2")	42 (92.5)	7035	60 (13230)	80 (17640)	1800 (1327)	1800 (1327)	1800 (1327)
S.SP.300		300 (11.81")										

The pneumatic slide units S.P features a cast iron base fitted with precision linear slideways and re-circulating ball pads, as part of the slide carrier.

Re-circulating ball pads enable linear speeds approximately 15 times (150 m/1' - 492 ft/min) that of the one obtained with prismatic slideways with grease lubrication every 1000 working hours.

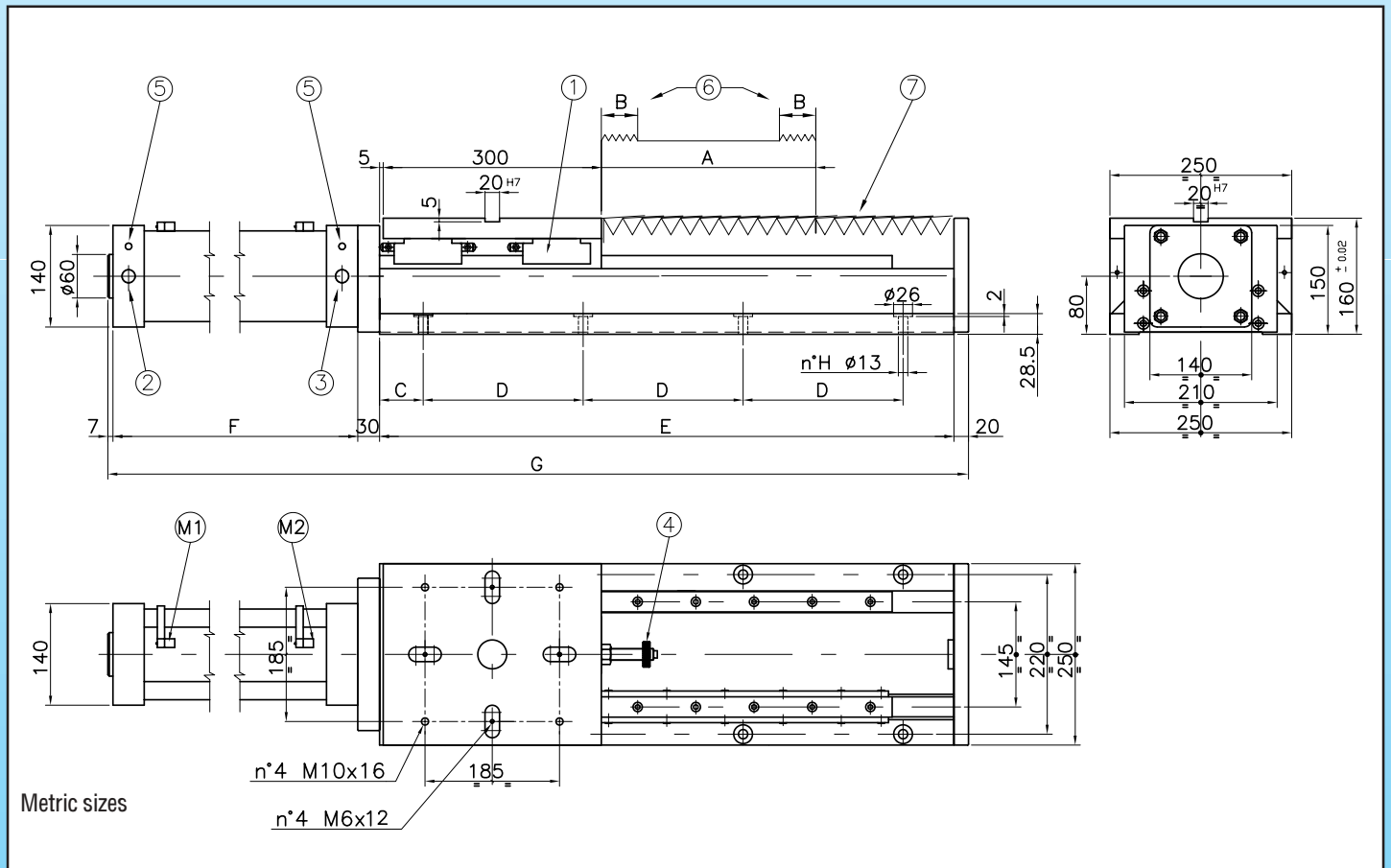
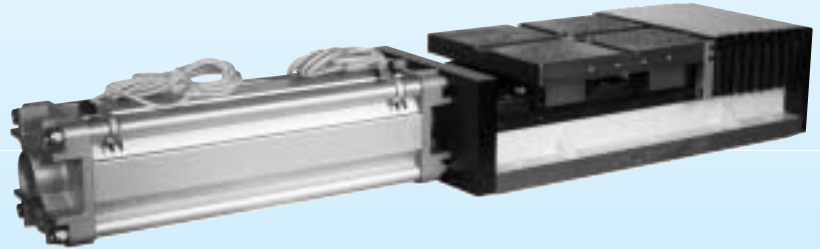
Thrust is supplied by a pneumatic cylinder with end cushions.

The recommended operating pressure is 6 bar (87 P.S.I.).

They can be installed in any position (horizontal, vertical, at an angle.)

Stroke is set by a mechanical stop.

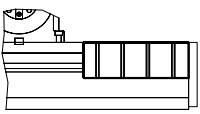
Slideway cover can be supplied on request.



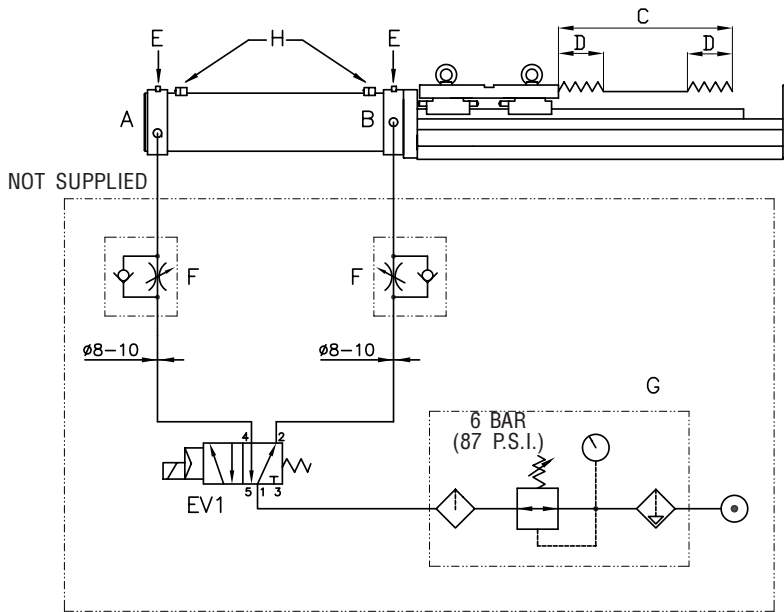
- 1- Re-circulating ball pads.
- 2- Advance air inlet (1/2" BSP/NPT) - 6 bar (87 P.S.I.)
- 3- Retract air inlet (1/2" BSP/NPT) - 6 bar (87 P.S.I.)
- 4- Stroke adjusting screw 1,5 mm (.059") pitch
- 5- Cushion adjustment
- 6- Cushion stroke
- 7- Slideway cover (on request)
- M1-M2- proximity switches (Reed N.O.)
3 metres (118.11") long cables.

TYPE	A	B	C	D	E	F	G	H
S.P200	200	44	50	225	550	360	967	6
S.P300	300	44	55	280	670	460	1187	6
S.P400	400	44	60	220	790	560	1407	8

SLIDE UNITS		STROKE
TYPE	CODE	mm (inch)
S.P.200	10310101	200 (7.87")
S.P.300	10310106	300 (11.81")
S.P.400	10310111	400 (15.74")

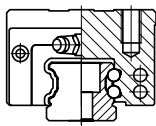
ACCESSORIES		STROKE	CODE
SLIDEWAY	COVER		
		200 mm (7.87")	28050044
		300 mm (11.81")	28050046
		400 mm (15.74")	28050048

PNEUMATIC-ELECTRIC CONTROL DIAGRAM

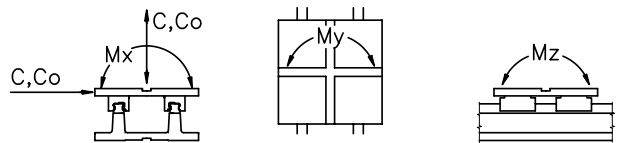


- A = forward 1/2" BSP/NPT
- B = return 3/8" BSP/NPT
- C = stroke
- D = 44 mm (1.73") cushion
- E = cushion setting
- F = flow regulator 1/2" BSP/NPT
- G = filter/regulator 1/2" BSP/NPT
- H = magnetic proximity switch
- EV1 = solenoid valve 1/2" BSP/NPT

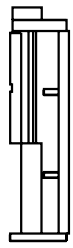
GUIDE PADS ARRANGEMENT (4 BALL ROWS)



MAXIMUM STRESSES



TECHNICAL FEATURES

	TECHNICAL FEATURES												
	TYPE OF THRUST	TOTAL STROKE mm (inch.)	THRUST N (lbs) 6 BAR (87 P.S.I.)	CYLINDER SECT AREA cm ³ (inch ³)		WEIGHT KG (lbs)	STANDARD COLOUR RAL	LOAD CAPACITY		STATIC MOMENT			
				Advance	Retract			KN (lbs)		Mx Nm (ft.lb)	My Nm (ft.lb)	Mz Nm (ft.lb)	
								C dynamic	Co static				
S.P.200	pneum.	200 (7.87")	7360 (1623)	122 (18.91")	115 (17.82")	90 (198)	7035	90 (19845)	118 (26019)	2800 (2065)	3400 (2507)	3400 (2507)	
S.P.300		300 (11.81")											105 (231)
S.P.400		400 (15.74")											120 (264)