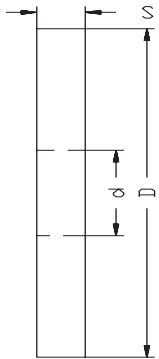




102

Frese a disco



HSSCo

λ 0°
 γ 10°



ISO
2587

DIN
885B

Uncoated

D	S	d	Z	102	SIL						
js16	k11				€						
63	4	22	22	102204	98,20						
63	5	22	22	102205	101,20						
63	6	22	22	102206	101,20						
63	8	22	22	102208	111,30						
63	10	22	22	102210	123,80						
63	12	22	20	102212	129,60						
63	14	22	20	102214	136,20						
80	6	27	24	102306	136,20						
80	8	27	24	102308	140,30						
80	10	27	24	102310	152,20						
80	12	27	24	102312	163,60						
80	14	27	20	102314	174,90						
80	16	27	20	102316	184,40						
100	6	27	26	102406	174,90						
100	8	27	26	102408	190,90						
100	10	27	26	102410	206,40						
100	12	27	26	102412	224,20						
100	14	27	22	102414	239,10						
100	16	27	22	102416	252,80						
125	10	32	30	102510	275,90						
125	12	32	24	102512	297,40						
125	14	32	24	102514	319,30						
125	16	32	24	102516	347,90						
125	18	32	24	102518	388,90						
125	20	32	24	102520	418,10						

DISCO



101

Frese a disco

HSSCo

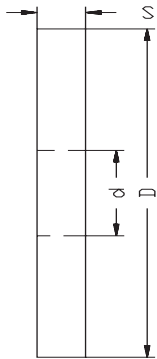
$\lambda 12^\circ$
 $\gamma 10^\circ$



ISO
2587

DIN
885A

Uncoated



101

Frese a disco

HSSCo

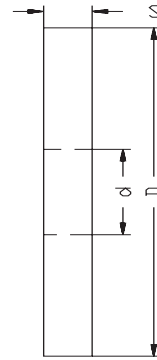
$\lambda 12^\circ$
 $\gamma 10^\circ$



ISO
2587

DIN
885A

Uncoated



				101	SIL					101	SIL
D	S	d	Z		€	D	S	d	Z		€
js16	k11					js16	k11				
50	3	16	14	101103	95,20	100	3	32	22	101403	200,40
50	4	16	14	101104	83,90	100	4	32	22	101404	163,00
50	5	16	14	101105	83,90	100	5	32	22	101405	167,10
50	6	16	14	101106	89,30	100	6	32	22	101406	174,90
50	7	16	14	101107	93,40	100	7	32	18	101407	183,20
50	8	16	14	101108	93,40	100	8	32	18	101408	190,90
50	9	16	14	101109	105,30	100	9	32	18	101409	198,10
50	10	16	14	101110	105,30	100	10	32	18	101410	206,40
63	3	22	16	101203	120,20	100	12	32	18	101412	224,20
63	4	22	16	101204	98,20	100	14	32	18	101414	239,10
63	5	22	16	101205	101,20	100	16	32	18	101416	252,80
63	6	22	16	101206	101,20	125	4	32	24	101504	246,80
63	7	22	14	101207	106,50	125	5	32	24	101505	243,20
63	8	22	14	101208	111,30	125	6	32	24	101506	243,20
63	9	22	14	101209	117,70	125	7	32	20	101507	252,80
63	10	22	14	101210	123,80	125	8	32	20	101508	258,70
63	12	22	14	101212	129,60	125	10	32	20	101510	275,90
63	14	22	16	101214	136,20	125	12	32	20	101512	297,40
80	3	27	18	101303	145,80	125	14	32	20	101514	319,30
80	4	27	18	101304	120,20	125	16	32	20	101516	347,90
80	5	27	18	101305	128,50	125	18	32	20	101518	388,90
80	6	27	18	101306	136,20	125	20	32	20	101520	418,10
80	7	27	16	101307	139,80	160	5	40	26	101605	399,10
80	8	27	16	101308	139,80	160	6	40	26	101606	360,40
80	9	27	16	101309	145,80	160	7	40	26	101607	406,20
80	10	27	16	101310	152,20	160	8	40	26	101608	379,40
80	12	27	16	101312	163,60	160	10	40	22	101610	410,30
80	14	27	16	101314	174,90	160	12	40	22	101612	441,90
80	16	27	16	101316	184,40	160	14	40	22	101614	476,40
						160	16	40	24	101616	506,10
						160	18	40	24	101618	548,20
						160	20	40	22	101620	578,10

DISCO



10E

Frese semicircolari

HSSCo

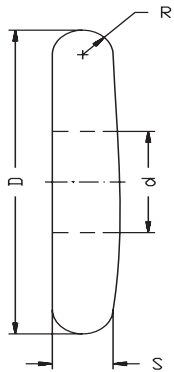
λ 0°
 γ 8°



ISO
3860

DIN
856

Uncoated

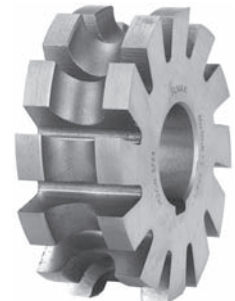


10F

Frese semicircolari

HSSCo

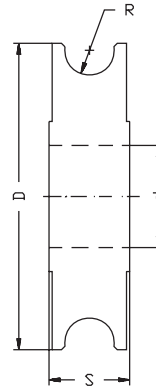
λ 0°
 γ 8°



ISO
3860

DIN
855A

Uncoated



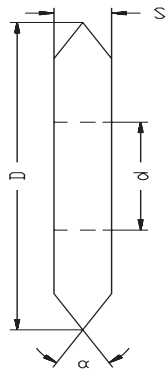
r	D	d	s	z	10E	SIL	r	D	d	s	z	10F	SIL
h11	js16					€	H11	js16					€
2	50	16	4	14	10E502	103,50	2	50	16	9	14	10F502	124,30
2,5	63	22	5	12	10E625	117,50	2,5	63	22	10	12	10F625	130,30
3	63	22	6	12	10E603	117,50	3	63	22	12	12	10F603	149,40
3,5	63	22	7	12	10E635	140,80	3,5	63	22	14	12	10F635	163,80
4	63	22	8	12	10E604	140,80	4	63	22	16	12	10F604	179,70
4,5	63	22	9	12	10E645	154,00	4,5	63	22	18	12	10F645	193,50
5	63	22	10	12	10E605	154,00	5	63	22	20	12	10F605	203,40
5,5	80	27	11	12	10E855	180,80	5,5	80	27	22	12	10F855	220,60
6	80	27	12	12	10E806	180,80	6	80	27	24	12	10F806	252,10
6,5	80	27	13	12	10E865	194,50	6,5	80	27	26	12	10F865	282,50
7	80	27	14	12	10E807	202,20	7	80	27	28	12	10F807	300,30
7,5	80	27	15	12	10E875	220,10	7,5	80	27	30	12	10F875	360,40
8	80	27	16	12	10E808	220,10	8	80	27	32	12	10F808	377,60
8,5	100	32	17	12	10E185	274,80	8,5	100	32	34	12	10F185	399,10
9	100	32	18	12	10E109	274,80	9	100	32	34	12	10F109	450,80
9,5	100	32	19	12	10E195	322,30	9,5	100	32	36	12	10F195	490,60
10	100	32	20	12	10E110	322,30	10	100	32	36	12	10F110	504,90

DISCO



10A

Frese ad angolo



HSSCo

λ 0°
 γ 0°



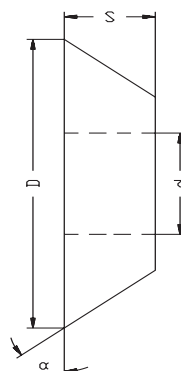
ISO
6108

DIN
847

Uncoated

10B

Frese ad angolo



HSSCo

λ 0°
 γ 3°



DIN
842A

Uncoated

α	D	S	d	Z	10A	SIL	α	D	S	d	Z	10B	SIL
$\pm 30'$	js16					€	$\pm 25'$	js16					€
45°	50	8	16	16	10A504	123,10	45°	40	12	10	14	10B404	113,10
45°	63	10	22	18	10A634	161,80	45°	50	15	13	16	10B504	138,00
45°	80	12	27	18	10A804	241,40	45°	63	18	16	16	10B634	188,50
45°	100	18	32	20	10A104	346,70	45°	80	23	22	18	10B804	293,20
							45°	100	30	27	20	10B104	496,50
60°	50	10	16	16	10A506	126,80							
60°	63	14	22	18	10A636	167,10	50°	40	13	10	14	10B405	113,10
60°	80	18	27	18	10A806	241,40	50°	50	16	13	16	10B505	138,00
60°	100	25	32	20	10A106	369,90	50°	63	20	16	16	10B635	188,50
							50°	80	25	22	18	10B805	293,20
90°	50	14	16	16	10A509	132,70	50°	100	32	27	20	10B105	496,50
90°	63	20	22	18	10A639	184,40							
90°	80	22	27	18	10A809	269,40	60°	40	13	10	14	10B406	113,10
90°	100	32	32	20	10A109	398,40	60°	50	16	13	16	10B506	138,00
							60°	63	20	16	16	10B636	188,50
							60°	80	25	22	18	10B806	293,20
							60°	100	32	27	20	10B106	496,50