



TA
 MO
 HT
 VH
 TSI/TSX
 T
 MT-TC-TC3
 Accessori
 Appendice tecnica

teste ad angolo angle heads

Le nuove teste ad angolo serie **TA** della O.M.G. sono state realizzate per eseguire quelle lavorazioni che con le macchine utensili orizzontali o verticali non si possono risolvere se non con ulteriori piazzamenti del pezzo; le teste ad angolo perciò consentono una riduzione di tempi e costi nelle lavorazioni meccaniche.

La O.M.G. presenta una gamma rinnovata e ampliata di teste ad angolo, così suddivise:

Serie TA monomandrino, dove l'angolo è di 90°

Serie TA... 2 a due mandrini contrapposti

Serie TA... D monomandrino con passaggio refrigerante per il centro

Serie TAO, monomandrino offset specifica per operazione di fresatura

Serie TAO... D, con liquido refrigerante ad alta pressione passante per il centro utensile

Serie TAV, l'inclinazione del mandrino è regolabile da +90° a -90°

Serie TAF, l'inclinazione del mandrino viene eseguita su richiesta del cliente

Teste speciali realizzate su specifiche richieste del cliente.

Le teste ad angolo O.M.G. possono venire applicate su macchine utensili tradizionali, centri di lavoro con cambio automatico dell'utensile, centri di tornitura con torretta motorizzata. Il cinematismo trattato termicamente, i cuscinetti di precisione utilizzati e le coppie coniche Gleason, conferiscono a tutte le teste un'ottima rigidità e precisione nelle lavorazioni "a sbalzo" che queste teste eseguono.

Il sistema antirotante di nuova concezione aumenta la rigidità e la precisione di posizionamento; quando alle teste ad angolo sono richieste prestazioni estreme si consiglia l'utilizzo del sistema **TRIBLOCK**.

Le teste ad angolo serie **TA** sono state studiate e definite avvalendosi di sistemi computerizzati all'avanguardia a supporto di conoscenze acquisite dalla O.M.G. in quarant'anni di esperienza nel settore.

Tutto questo ha permesso di fare scelte innovative nei materiali da costruzione, nei trattamenti termici e nelle lavorazioni meccaniche così da ottenere precisione, robustezza, rigidità e finitura al "top".

The new OMG TA series of angle heads has been manufactured in order to execute machining operations that horizontal or vertical machine tools are unable to perform except with further piece placements. Hence, the angle heads further reduce mechanical machining times and costs.

O.M.G. markets a renewed and extended range of angle heads as follows:

TA series 90° single-spindle

TA... 2 series two opposite spindles

TA... D series single-spindle with internal coolant through the tool

TAO series offset single spindle particularly on milling operation

TAO... D series with high pressure coolant through the spindle center

TAV series the angular position of the spindle is adjustable from +90° to -90°

TAF series the angular position of the spindle is made according to customer requirements.

Special heads made according to customer requirements.

The angle heads made by O.M.G. can be fitted to traditional machine tools, machining centres with automatic tool change and lathe centres with motorised turrets. The heat-treated kinematic mechanism, the precision bearings and the Gleason bevel gears, provide all heads with excellent strength and precision in "cantilever" machining operations.

The new antirotation system increases strength and positioning precision; when extreme angle head performances are required, we suggest using the Triblock system.

The TA series of angle heads has been studied and defined by advanced computerised systems as a support to OMG's 40 years' experience in the sector. All this has resulted in innovative solutions being achieved in terms of building materials, heat treatments and machining operations, in order to obtain precision, strength, reliability and excellent finishes.

TA04P	1-2
TA06P	1-3
TA07P	1-4
TA07PL	1-5
TA10P	1-6
TA10PL	1-7
TA13P	1-8
TA16P	1-9
TA20P	1-10
TA20.30	1-11
TA26P	1-12
TA26.40	1-13
TA07.2P	1-14
TA10.2P	1-15
TA13.2P	1-16
TA16.2P	1-17
TA20.2P	1-18
TA26.2P	1-19
TA07.PD	1-20
TA10.PD	1-21
TA13.PD	1-22
TA16.PD	1-23
TA20.PD	1-24
TA26.PD	1-25
TAV10.P	1-26
TAO13... ..	1-27
TAO20... ..	1-28
TAO13... D	1-29
TAO20... D	1-30
TAV13.P	1-31
TAV20.P	1-32
TAV50.T	1-33
TAF13.P	1-34
TAF20.P	1-35
TA13PT	1-36
TA16PT	1-37
TA20...T	1-38
TA26...T	1-39
TA50.T	1-40
TA13P.VDI	1-42
TA16P.VDI	1-43
TAV10P.VDI	1-44
TAV13P.VDI	1-45
Antirotante/Torque arm	1-46
Antirotante Triblock/Triblock torque arm	1-48
Esecuzioni speciali/Special executions	1-52

Accessori/Accessories 8-1

TA

MO

HT

VH

TSI/TSX

T

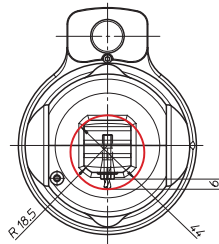
MT-TC-TC3

Accessori
AccessoriesAppendice tecnica
Technical supplement

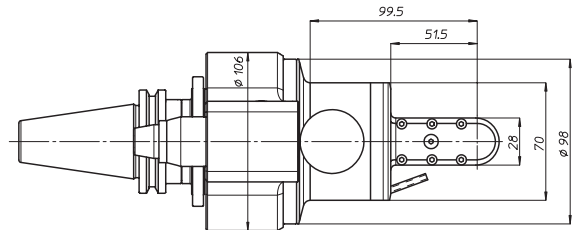
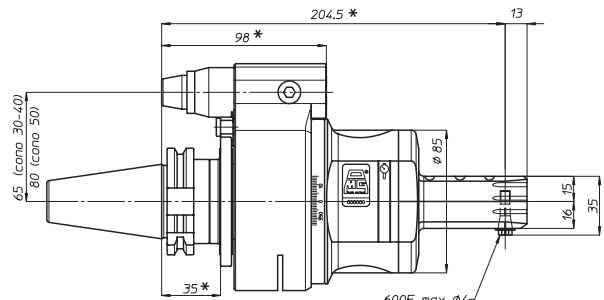
testa ad angolo - angle head

TA04P

TA04P-DIN69871.A30
 TA04P-DIN69871.A40
 TA04P-DIN69871.A45
 TA04P-DIN69871.A50
 TA04P-ANSI B5.50 CAT40
 TA04P-ANSI B5.50 CAT50
 TA04P-MAS403.BT40
 TA04P-MAS403.BT50

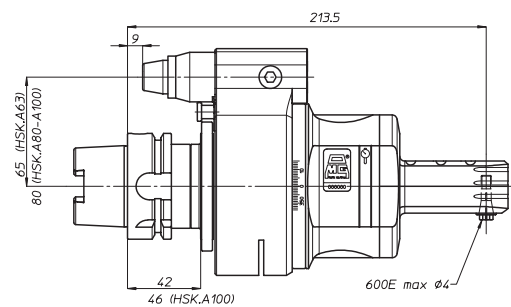


Diametro minimo del
foro in cui entra la testa

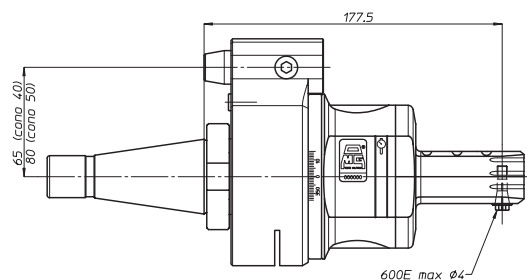


* Con cono BT50 aumentate le quote di 8 mm
 Increase the quote by 8 mm when using BT50 shank

TA04P-DIN69893.HSK.A63
 TA04P-DIN69893.HSK.A80
 TA04P-DIN69893.HSK.A100



TA04P-DIN2080.40
 TA04P-DIN2080.50
 TA04P-ANSI B5.18 NMTB40
 TA04P-ANSI B5.18 NMTB50



peso/weight



5,5 kg



7,5 kg

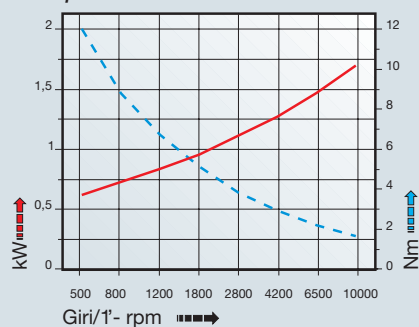
rotazione/rotation



input

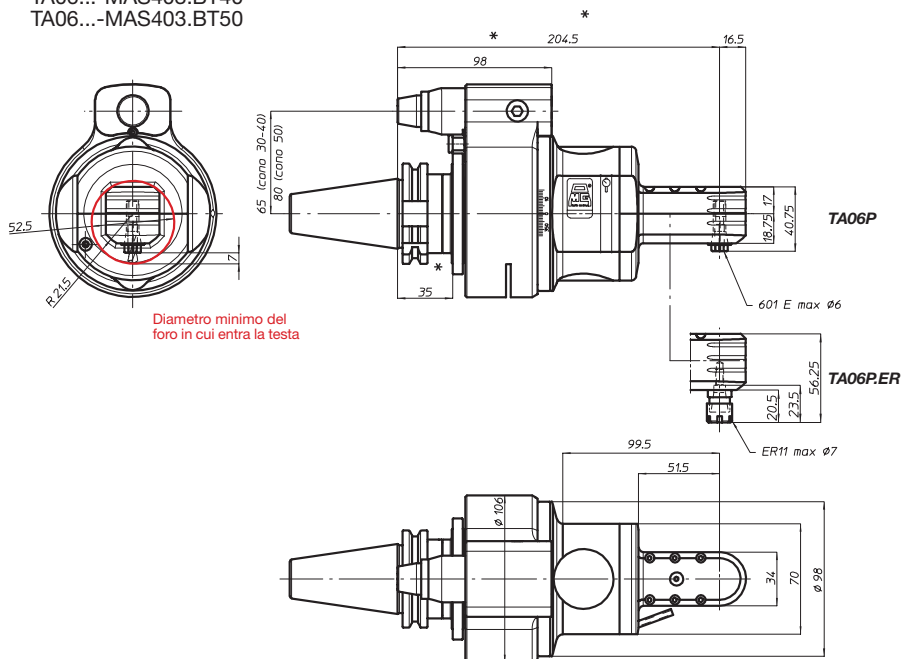


output

prestazioni
performances TA04P

TA06P

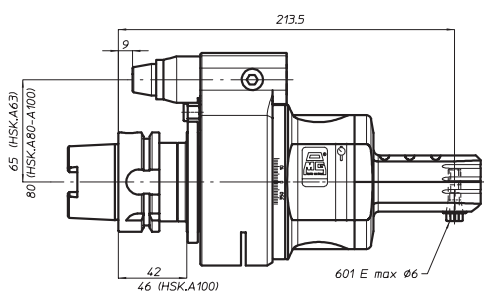
TA06...-DIN69871.A30
 TA06...-DIN69871.A40
 TA06...-DIN69871.A45
 TA06...-DIN69871.A50
 TA06...-ANSI B5.50 CAT40
 TA06...-ANSI B5.50 CAT50
 TA06...-MAS403.BT40
 TA06...-MAS403.BT50



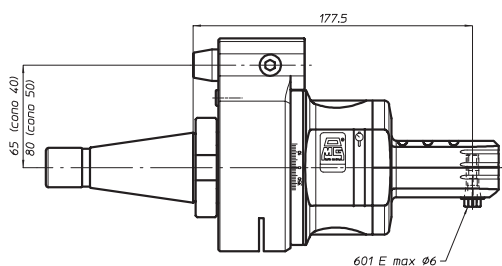
Diametro minimo del foro in cui entra la testa

* Con cono BT50 aumentate le quote di 8 mm
 Increase the quote by 8 mm when using BT50 shank

TA06...-DIN69893.HSK.A63
 TA06...-DIN69893.HSK.A80
 TA06...-DIN69893.HSK.A100



TA06...-DIN2080.40
 TA06...-DIN2080.50
 TA06...-ANSI B5.18 NMTB40
 TA06...-ANSI B5.18 NMTB50



 $\varnothing 6$
  M5
  1-1
  giri/1' r.p.m. 8000

peso/weight



6 kg



8,3 kg

rotazione/rotation

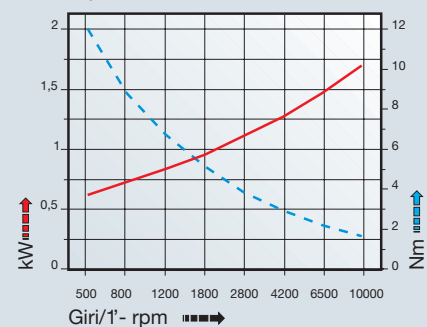


input



output

prestazioni performances TA06P



TA

MO

HT

VH

TSI/TSX

T

MT-TC-TC3

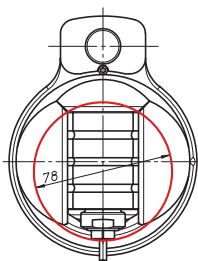
Accessori Accessories

Appendice tecnica Technical supplement

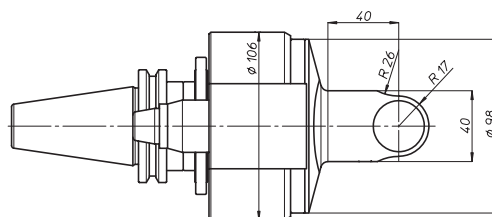
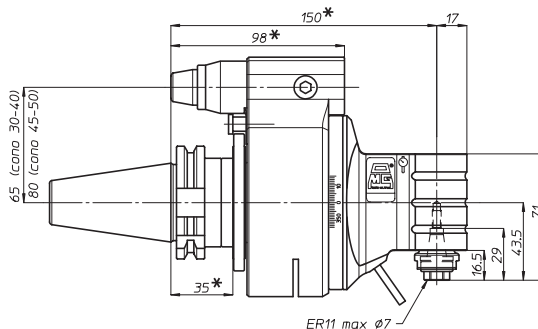
TA07P



- TA07P-DIN69871.A30
- TA07P-DIN69871.A40
- TA07P-DIN69871.A45
- TA07P-DIN69871.A50
- TA07P-ANSI B5.50 CAT40
- TA07P-ANSI B5.50 CAT50
- TA07P-MAS403.BT40
- TA07P-MAS403.BT50

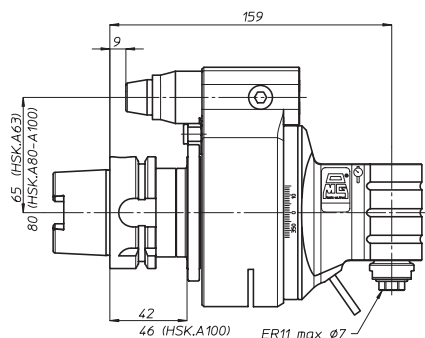


Diametro minimo del foro in cui entra la testa

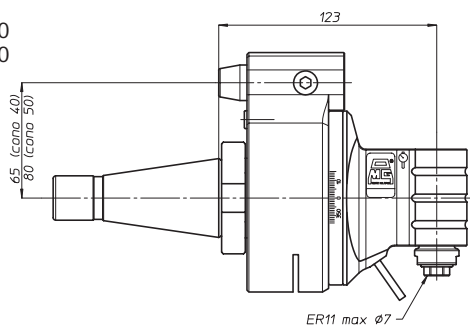


* Con cono BT50 aumentate le quote di 8 mm
Increase the quote by 8 mm when using BT50 shank

- TA07P-DIN69893.HSK.A63
- TA07P-DIN69893.HSK.A80
- TA07P-DIN69893.HSK.A100



- TA07P-DIN2080.40
- TA07P-DIN2080.50
- TA07P-ANSI B5.18 NMTB40
- TA07P-ANSI B5.18 NMTB50



peso/weight



5 kg



7 kg

rotazione/rotation

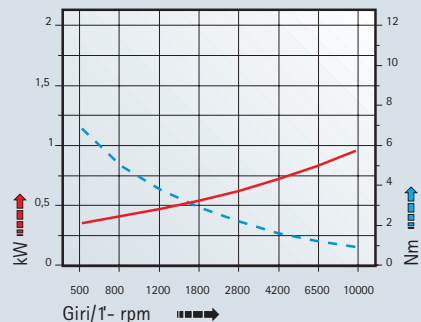


input



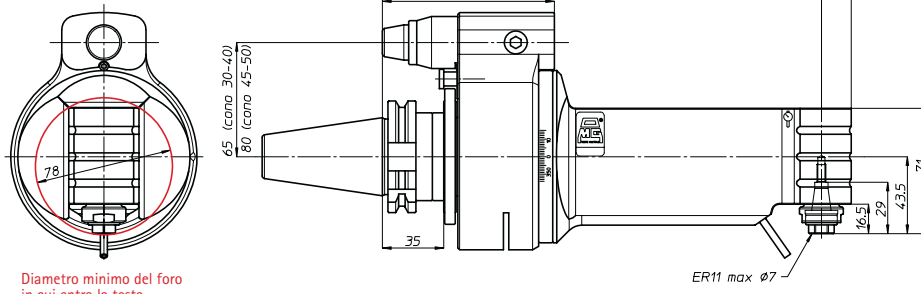
output

prestazioni performances **TA07P**

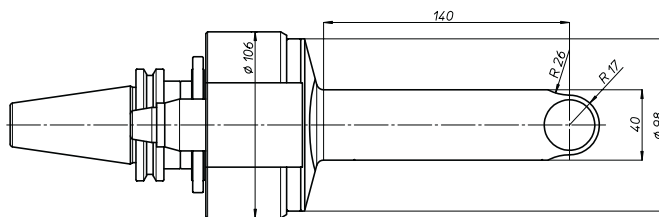


TA07P.L

- TA07P.L-DIN69871.A30
- TA07P.L-DIN69871.A40
- TA07P.L-DIN69871.A45
- TA07P.L-DIN69871.A50
- TA07P.L-ANSI B5.50 CAT40
- TA07P.L-ANSI B5.50 CAT50
- TA07P.L-MAS403.BT40
- TA07P.L-MAS403.BT50

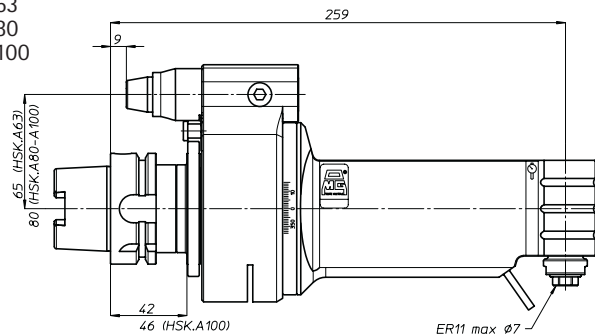


Diametro minimo del foro in cui entra la testa

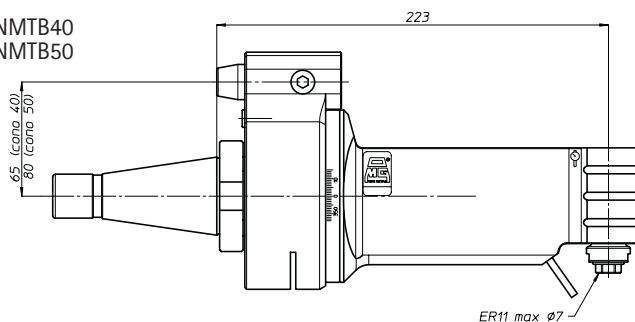


* Con cono BT50 aumentate le quote di 8 mm
Increase the quote by 8 mm when using BT50 shank

- TA07P.L-DIN69893.HSK.A63
- TA07P.L-DIN69893.HSK.A80
- TA07P.L-DIN69893.HSK.A100



- TA07P.L-DIN2080.40
- TA07P.L-DIN2080.50
- TA07P.L-ANSI B5.18 NMTB40
- TA07P.L-ANSI B5.18 NMTB50



-  ø 7
-  M6
-  1-1
-  giri/1' r.p.m. 10000

peso/weight



7,5 kg



9,5 kg

rotazione/rotation

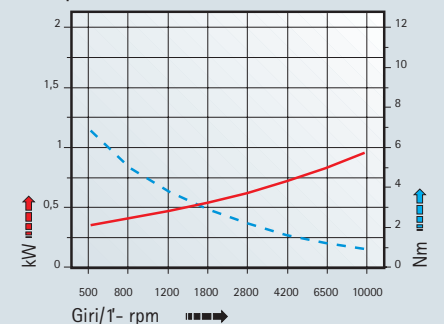


input



output

prestazioni performances **TA07P.L**



TA

MO

HT

VH

TSI/TSX

T

MT-TC-TC3

Accessori
Accessories

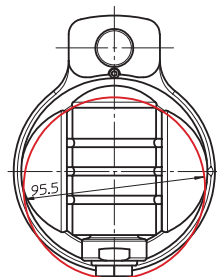
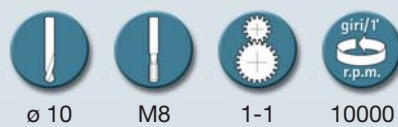
Appendice tecnica
Technical supplement

testa ad angolo - angle head

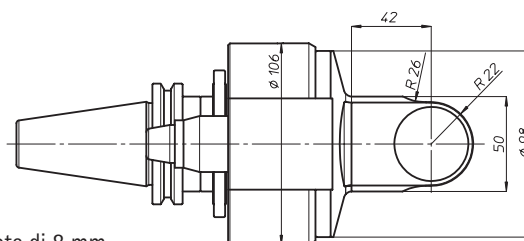
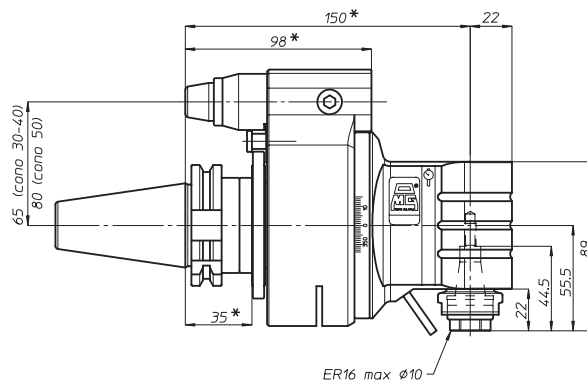
TA10P



- TA10P-DIN69871.A30
- TA10P-DIN69871.A40
- TA10P-DIN69871.A45
- TA10P-DIN69871.A50
- TA10P-ANSI B5.50 CAT40
- TA10P-ANSI B5.50 CAT50
- TA10P-MAS403.BT40
- TA10P-MAS403.BT50



Diametro minimo del foro in cui entra la testa



* Con cono BT50 aumentate le quote di 8 mm
Increase the quote by 8 mm when using BT50 shank

peso/weight



5,3 kg



7,5 kg

rotazione/rotation

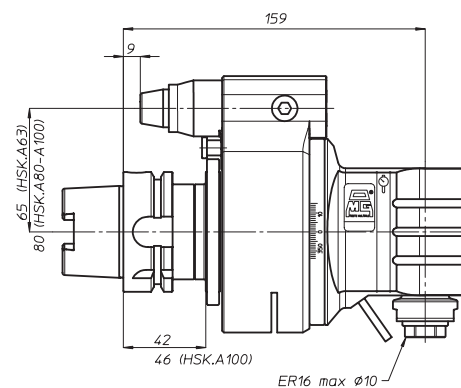


input

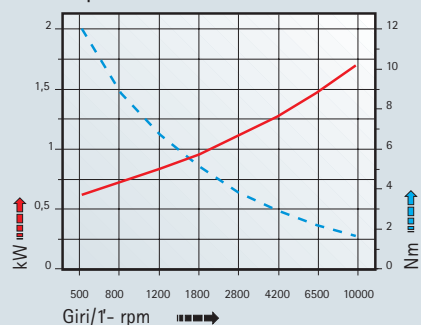


output

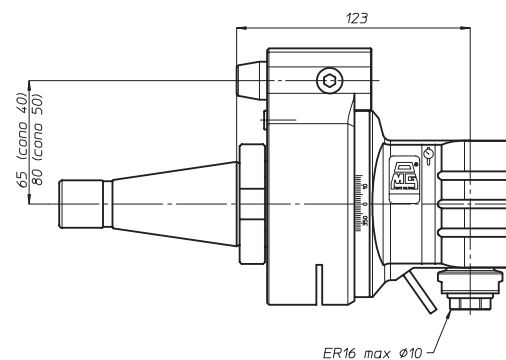
- TA10P-DIN69893.HSK.A63
- TA10P-DIN69893.HSK.A80
- TA10P-DIN69893.HSK.A100



prestazioni performances **TA10P**

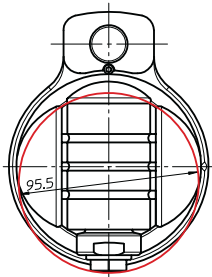


- TA10P-DIN2080.40
- TA10P-DIN2080.50
- TA10P-ANSI B5.18 NMTB40
- TA10P-ANSI B5.18 NMTB50

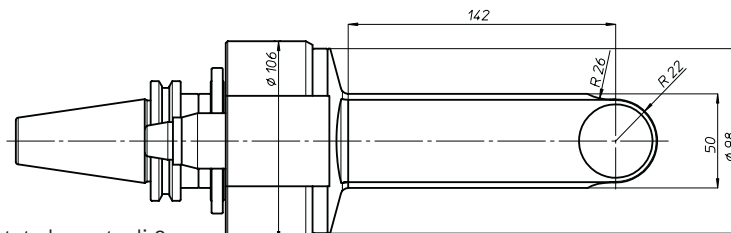
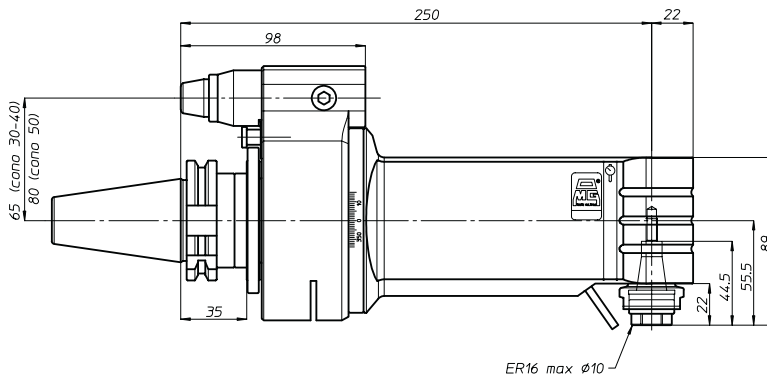


TA10P.L

- TA10P.L-DIN69871.A30
- TA10P.L-DIN69871.A40
- TA10P.L-DIN69871.A45
- TA10P.L-DIN69871.A50
- TA10P.L-ANSI B5.50 CAT40
- TA10P.L-ANSI B5.50 CAT50
- TA10P.L-MAS403.BT40
- TA10P.L-MAS403.BT50

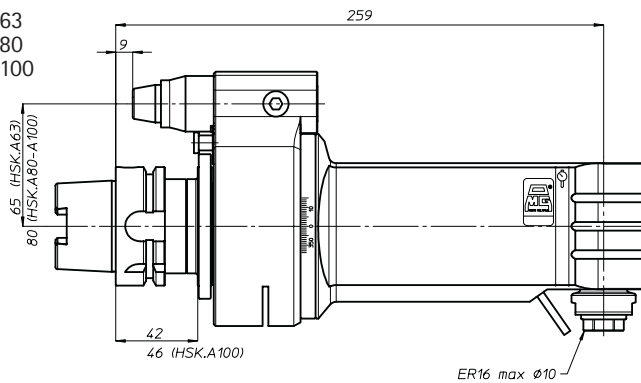


Diametro minimo del foro in cui entra la testa

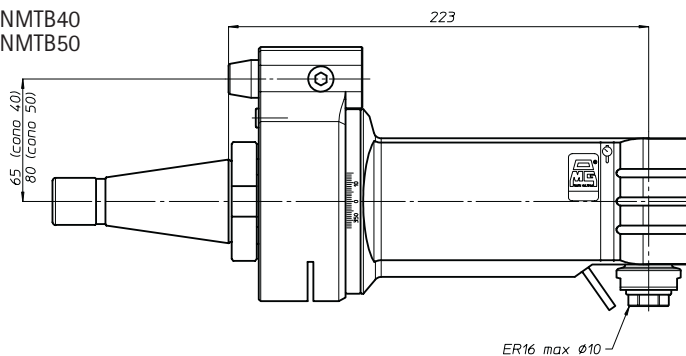


* Con cono BT50 aumentate le quote di 8 mm
Increase the quote by 8 mm when using BT50 shank

- TA10P.L-DIN69893.HSK.A63
- TA10P.L-DIN69893.HSK.A80
- TA10P.L-DIN69893.HSK.A100



- TA10P.L-DIN2080.40
- TA10P.L-DIN2080.50
- TA10P.L-ANSI B5.18 NMTB40
- TA10P.L-ANSI B5.18 NMTB50



peso/weight



8,3 kg



10,5 kg

rotazione/rotation

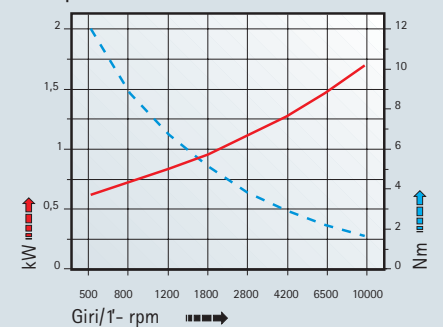


input



output

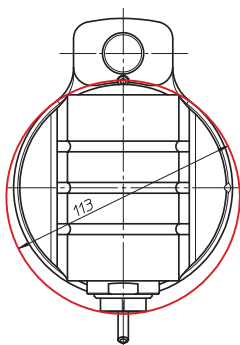
prestazioni performances TA10P.L



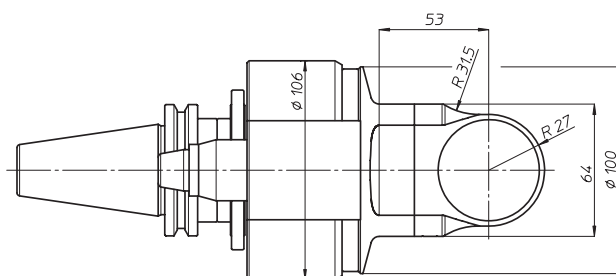
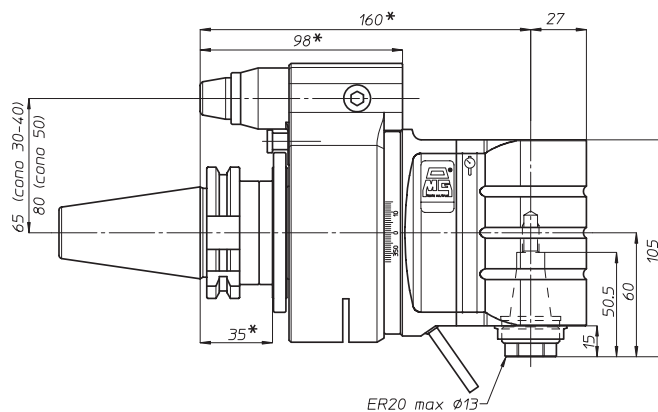
TA13P



- TA13P-DIN69871.A40
- TA13P-DIN69871.A45
- TA13P-DIN69871.A50
- TA13P-ANSI B5.50 CAT40
- TA13P-ANSI B5.50 CAT50
- TA13P-MAS403.BT40
- TA13P-MAS403.BT50

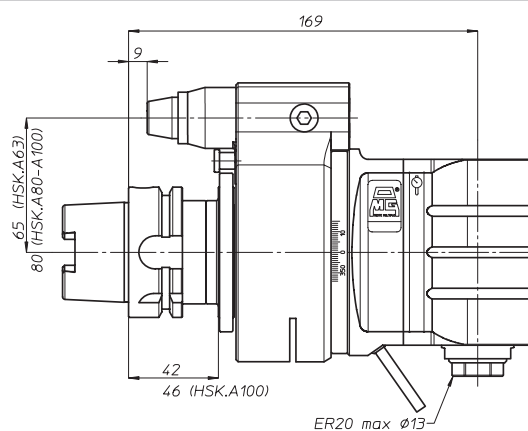


Diametro minimo del foro in cui entra la testa

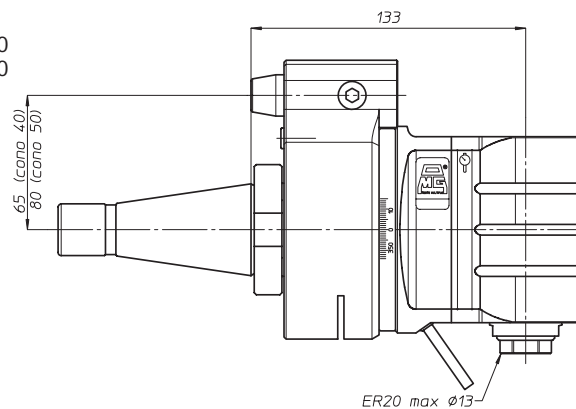


* Con cono BT50 aumentate le quote di 8 mm
Increase the quote by 8 mm when using BT50 shank

- TA13P-DIN69893.HSK.A63
- TA13P-DIN69893.HSK.A80
- TA13P-DIN69893.HSK.A100



- TA13P-DIN2080.40
- TA13P-DIN2080.50
- TA13P-ANSI B5.18 NMTB40
- TA13P-ANSI B5.18 NMTB50



peso/weight



6,5 kg



9 kg

rotazione/rotation

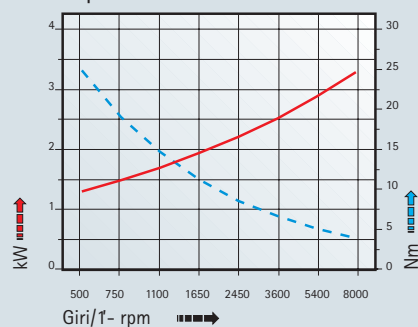


input



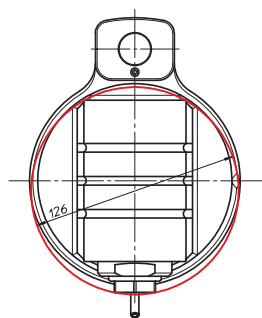
output

prestazioni performances **TA13P**

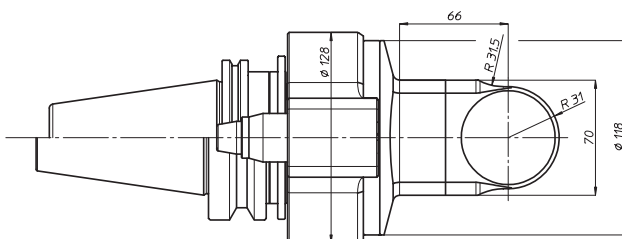
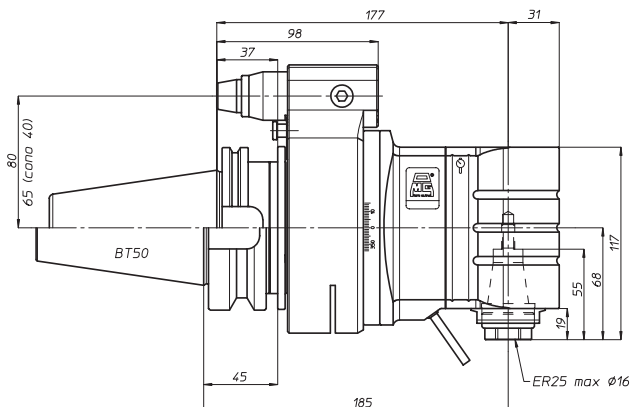


TA16P

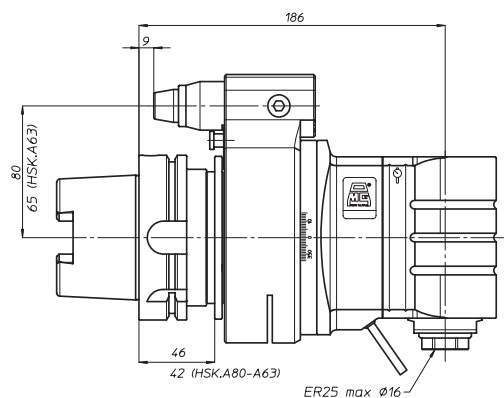
TA16P-DIN69871.A40
 TA16P-DIN69871.A45
 TA16P-DIN69871.A50
 TA16P-ANSI B5.50 CAT40
 TA16P-ANSI B5.50 CAT50
 TA16P-MAS403.BT40
 TA16P-MAS403.BT50



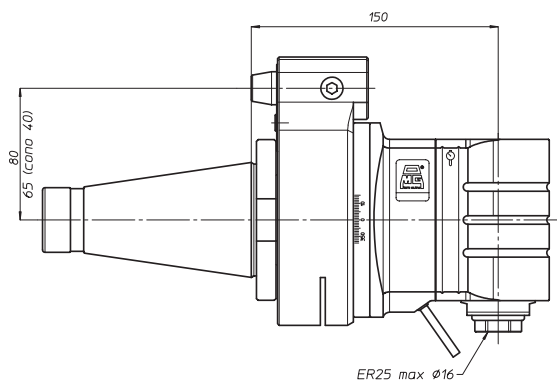
Diametro minimo del foro in cui entra la testa



TA16P-DIN69893.HSK.A63
 TA16P-DIN69893.HSK.A80
 TA16P-DIN69893.HSK.A100



TA16P-DIN2080.40
 TA16P-DIN2080.50
 TA16P-ANSI B5.18 NMTB40
 TA16P-ANSI B5.18 NMTB50



peso/weight



7,7 kg



11,7 kg

rotazione/rotation

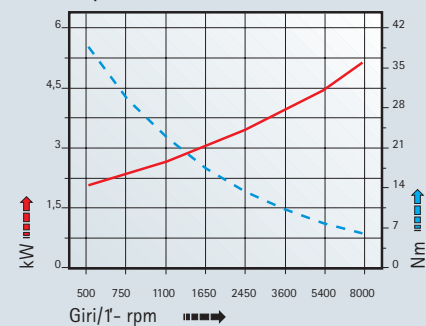


input



output

prestazioni performances TA16P



TA

MO

HT

VH

TSI/TSX

T

MT-TC-TC3

Accessori
Accessories

Appendice tecnica
Technical supplement

TA

MO

HT

VH

TSI/TSX

T

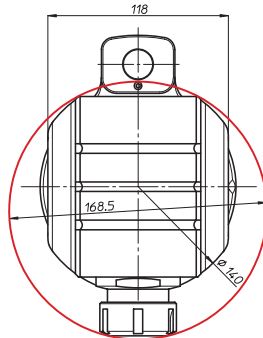
MT-TC-TC3

Accessori
AccessoriesAppendice tecnica
Technical supplement

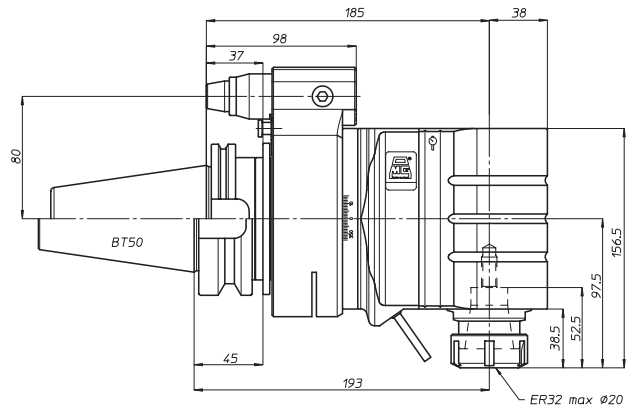
testa ad angolo - angle head

TA20P

TA20P-DIN69871.A45
 TA20P-DIN69871.A50
 TA20P-ANSI B5.50 CAT50
 TA20P-MAS403.BT50



Diametro minimo del foro
in cui entra la testa



peso/weight



14,5 kg

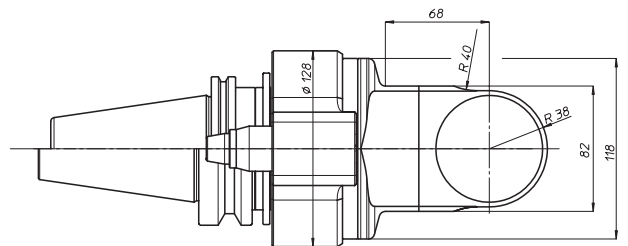
rotazione/rotation



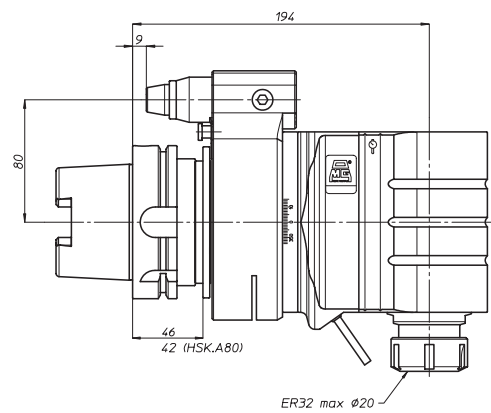
input



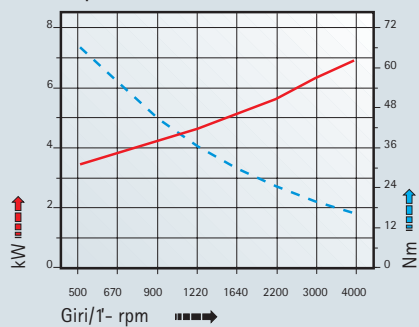
output



TA20P-DIN69893.HSK.A80
 TA20P-DIN69893.HSK.A100



prestazioni
performances **TA20P**



TA20P-DIN2080.50
 TA20P-ANSI B5.18 NMTB50

